

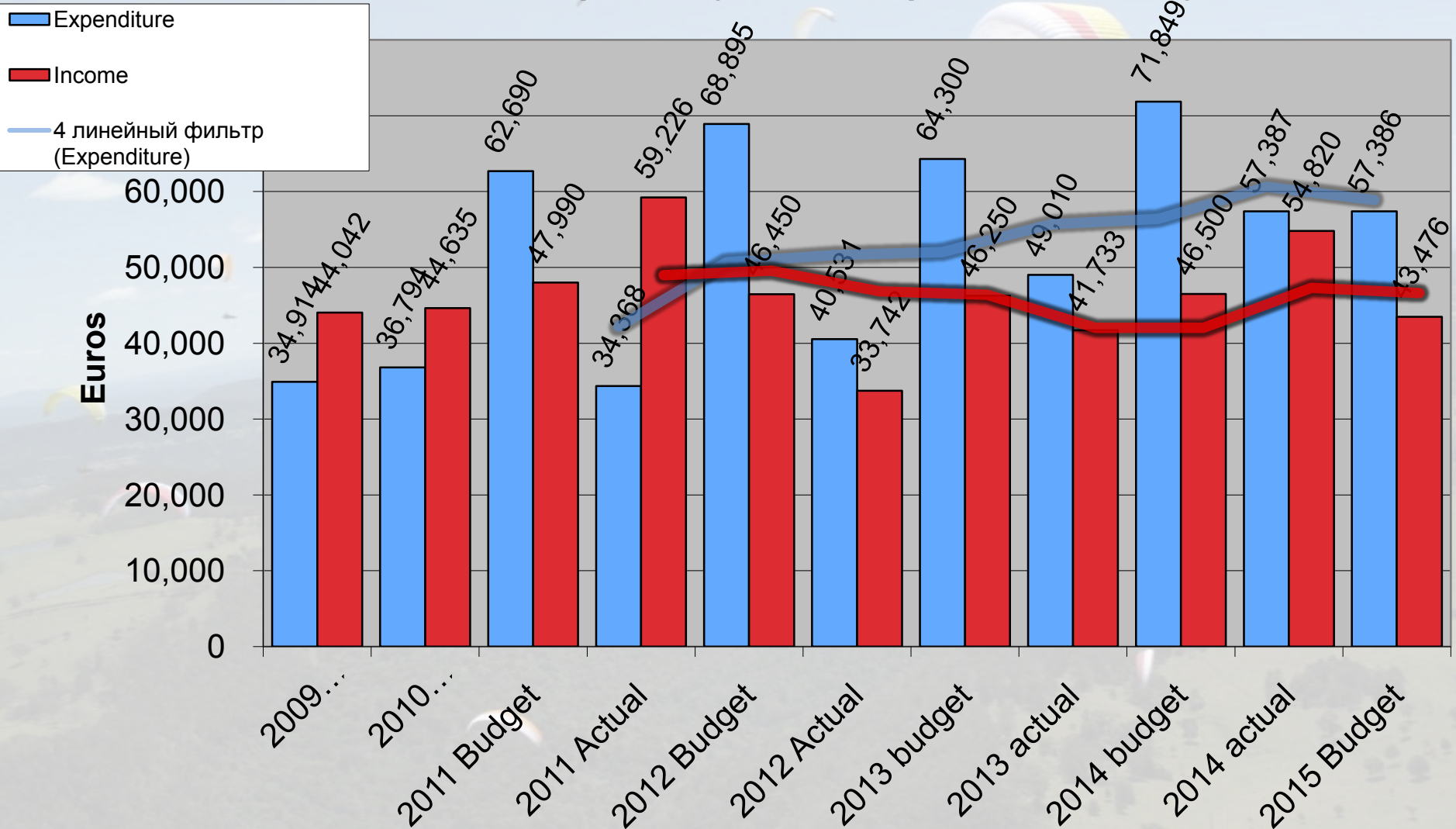
An aerial photograph showing a vast number of colorful paragliders scattered across a clear blue sky. The gliders are in various colors, including orange, blue, yellow, and red. Below them, a hilly landscape with green fields and distant mountains is visible. The overall scene is bright and clear.

# **CIVL Financials 2014**

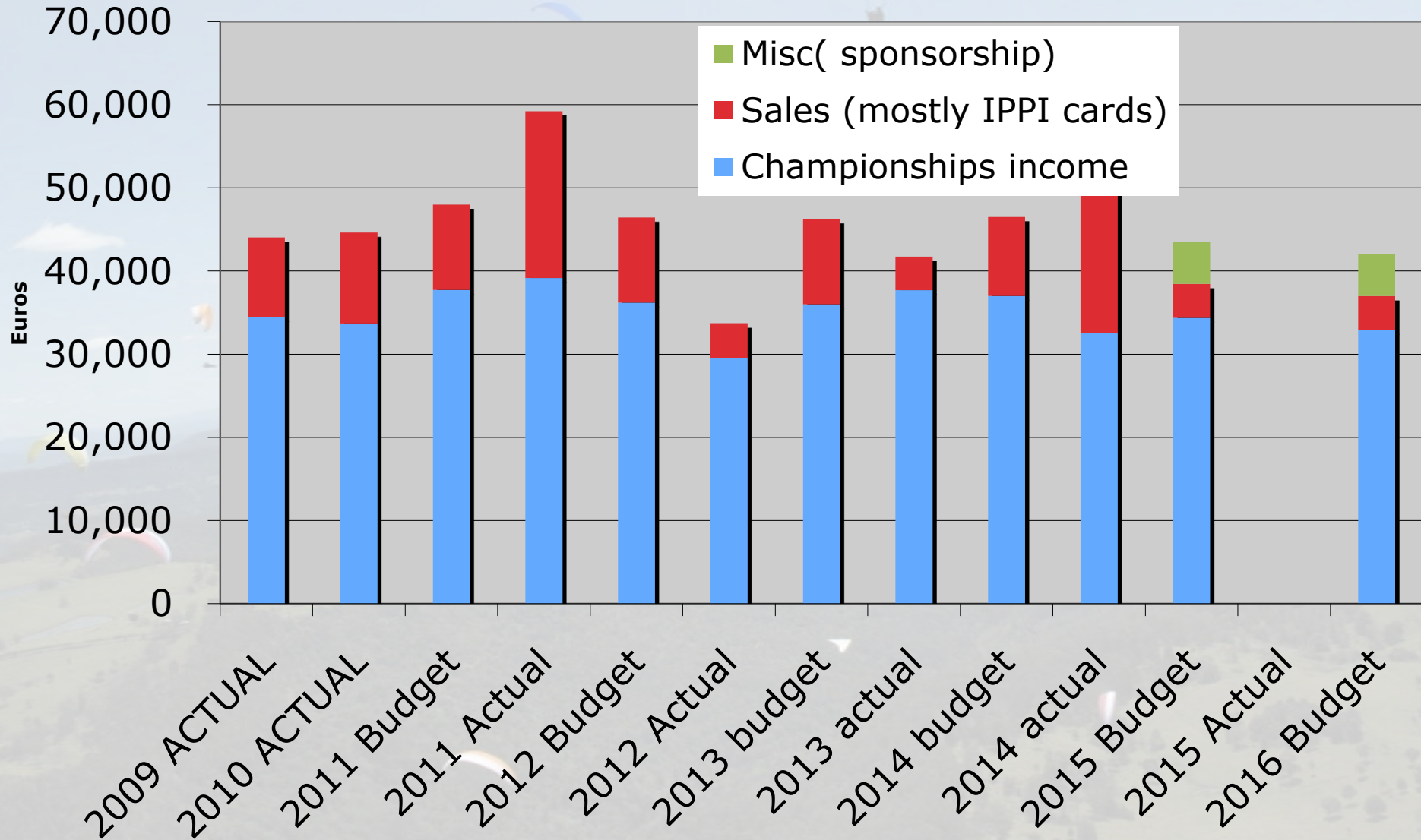
## **Hamish Barker**

# Income and expenditure

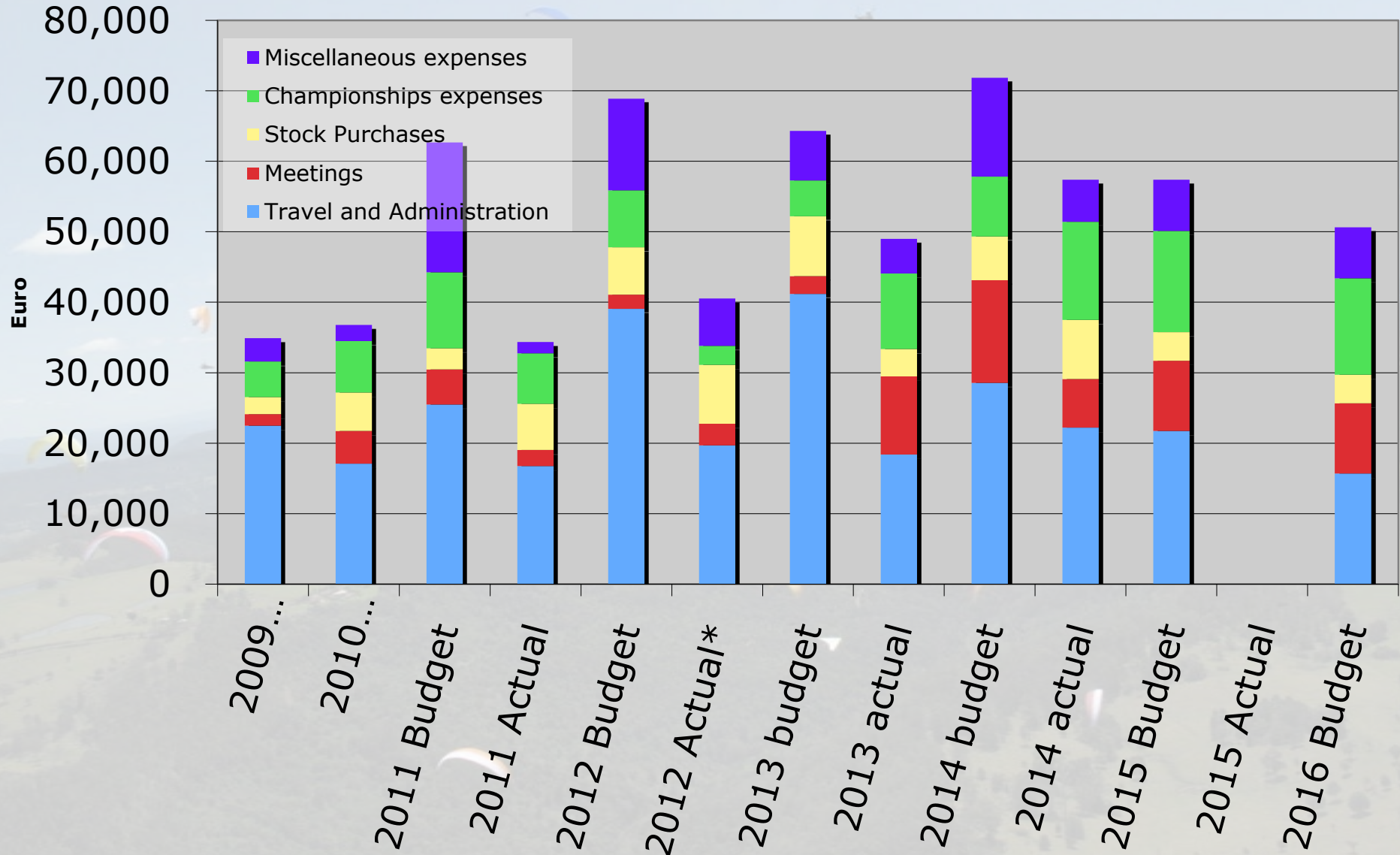
income verses expenses (not incl. deposits & refunds)



# Income



# Expenditure





# Income and Expenditure All

2009 ACTUAL

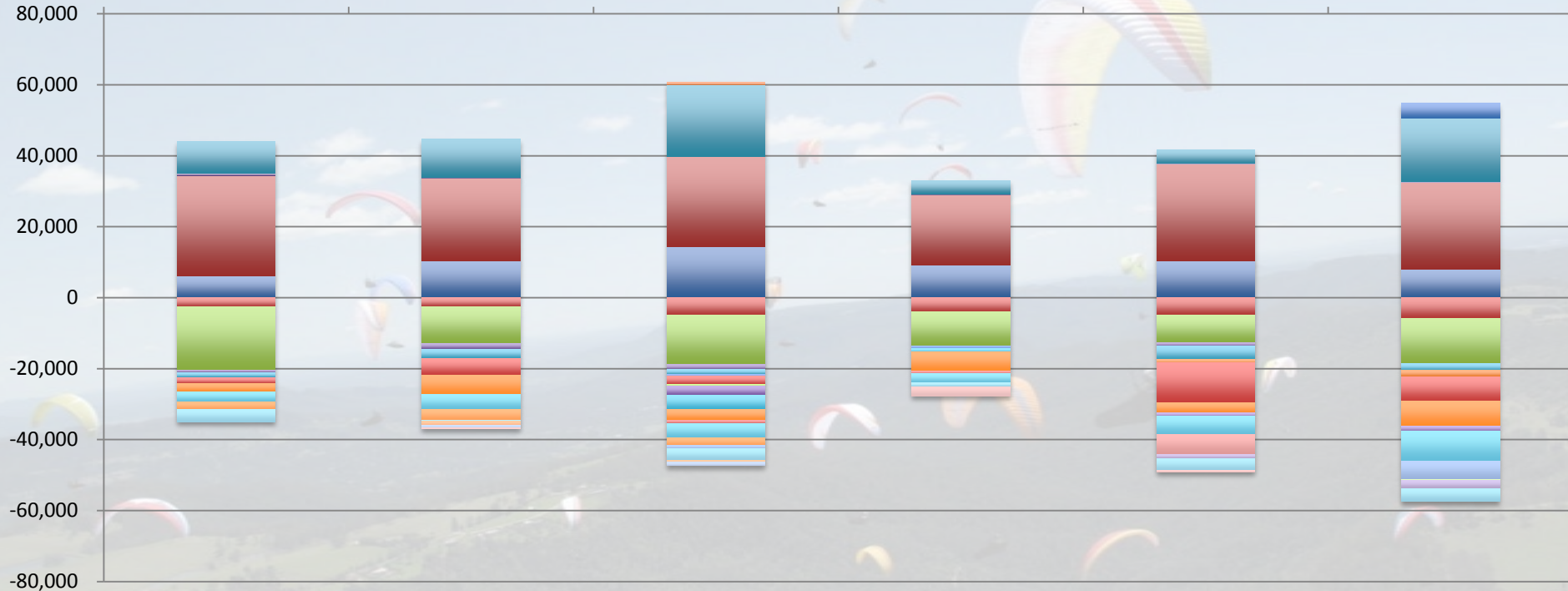
2010 ACTUAL

2011 Actual plus corr

2012 Actual up to Oct 23  
2012)

2013 FAI January data

2014 Actuals



- Cat 1 sf
- ARISF income
- Steward Training
- Meeting Misc
- Standards purch
- World Games
- WAG2012
- Cat 2 sf
- Sponsor income
- IT operation
- IPPI and other purch
- depreciation IPPI
- WXC
- Protests
- President Travel
- Bank Charge
- Medal purch
- J&S stipend
- Consultancy
- Safety
- Sales Badge/pins/books
- Comp coord and other
- Meeting Bureau/plenary
- Misc purch
- Sprog meas
- Software develop
- Sales IPPI
- Judge training
- Meeting FAI
- Computer purch
- Technical at comp
- Officials wear

# CIVL Account balance

- Balance at 1 January 2014: 138,295.42 Euro
- Net movement 2014: -2,566.81 Euro
- Balance at 31 Dec. 2014 : 135,728.61 Euro
- Liabilities in form of payment -15,206.40 Euro
- Net balance end year 120,522.21 Euro

# Assets

- IPPI cards:
  - 2650 Euro
- 15,000 IPPI card purchase (17.4.2014)
  - 2956 Euro
- Badges and Pins stock (to be determined)



# Liabilities

- Cat 1 entry fees to CIVL -30,678 Euro
- Sanction fees -5,814 Euro
- Deposits -1,430 Euro
- Payments to be filed -15,206 Euro
  - This last item actually means net movement to account balance is actually -17,773 Euro