

Measurement request from test house for CCC certification From February 2016

Brand	Gin Gliders Inc.	Test house name	DHV
Model	Boomerang 11	CCC certification n°	GS-CCC-011-17
Size	ML	Certification date	27.12.2017
Serial n°	BG07-Q832P0002P		

Canopy dimensions

Position	Rib n° from center	Distance [mm]	Tension [daN]	Manual tolerances	Aspect ratio < 7.90 4*span / (chord A+2.5*Chord B)		Number cells
Full Span	x	13580	5	+/-2%	7,68		
1/2 Trailing Edge	x	6942	5	+/-1%			
Chord A	1	2210	1	+/-1%			
Chord B	22	1945	1	+/-1%			Scale factor

Chord length, inlet position, tabs position measured from trailing edge.

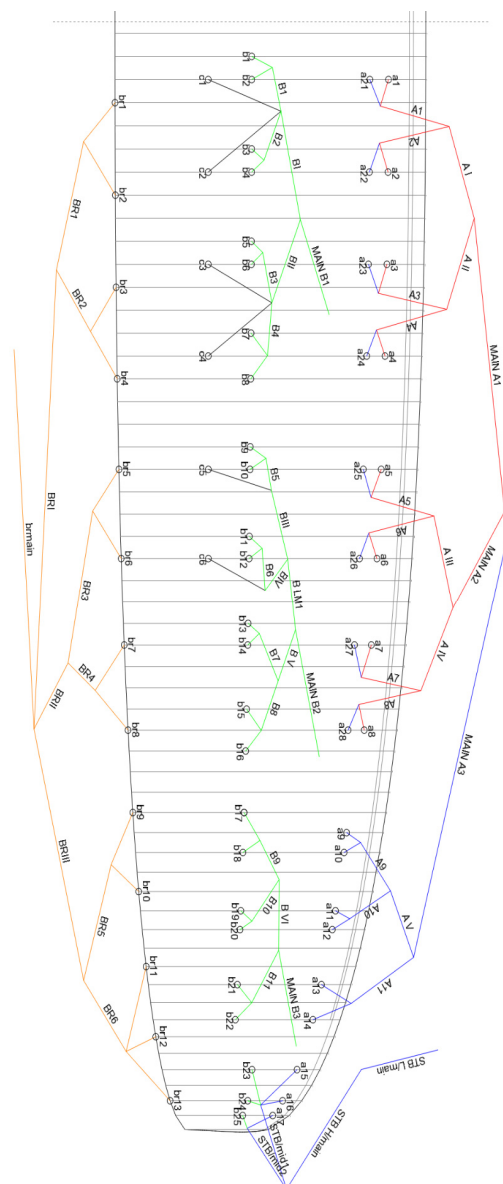
(The tab A & B & C can be on different rib, take care to specify it)

On first lined rib (from center)	Rib n° from center	Distance [mm]	Tension [daN]	Manual tolerances
Chord	2	2205	1	+/-1%
Top of inlet	2	2120	1	+/-1%
Bottom of inlet	2	2090	1	+/-1%
Tab Aa*	3	1900	1	+/-10mm
Tab Ab*	3	1788	1	+/-10mm
Tab B*	2	955	1	+/-10mm
Tab C*	3	664	1	+/-10mm

On last lined rib of Group 2 (from center)	Rib n° from center	Distance [mm]	Tension [daN]	Manual tolerances
Chord	32	1646	1	+/-1%
Top of inlet	32	1583	1	+/-1%
Bottom of inlet	32	1555	1	+/-1%
Tab Aa*	32	1429	1	+/-10mm
Tab Ab*	32	1343	1	+/-10mm
Tab B*	33	704	1	+/-10mm
Tab C*	24	572	1	+/-10mm

On last lined rib (stabilo, from center)	Rib n° from center	Distance [mm]	Tension [daN]	Manual tolerances
Chord	53	586	1	+/-1%
Tab A*	53	501	1	+/-10mm
Tab B*	53	354	1	+/-10mm

*Bridle (tab) position measurement:
end of trailing edge to center bridle (tab)



ABSOLUTE LINE LENGHT

Absolute line length from bottom riser to canopy in mm with 5daN of tension (Manual tolerances +/-10mm)

Lined Rib n°	A1			A2			B		
	Manual	Glider	Delta	Manual	Glider	Delta	Manual	Glider	Delta
1	8624	8618	-6	8600	8597	-3	8669	8669	0
2	8502	8501	-1	8477	8480	3	8608	8608	0
3	8467	8462	-5	8442	8441	-1	8503	8500	-3
4	8522	8515	-7	8500	8495	-5	8494	8494	0
5	8434	8435	1	8412	8415	3	8467	8466	-1
6	8311	8314	3	8290	8293	3	8452	8450	-2
7	8261	8265	4	8242	8250	8	8488	8488	0
8	8286	8291	5	8272	8276	4	8571	8568	-3
9	8117	8114	-3				8489	8486	-3
10	8075	8075	0				8428	8424	-4
11	7979	7978	-1				8325	8319	-6
12	7966	7968	2				8319	8314	-5
13	7906	7905	-1				8276	8275	-1
14	7902	7903	1				8260	8260	0
15	7771	7766	-5				8277	8277	0
16	7712	7708	-4				8337	8333	-4
17	7700	7696	-4				8150	8150	0
18							8066	8070	4
19							7985	7989	4
20							7976	7983	7
21							7920	7930	10
22							7913	7921	8
23							7761	7764	3
24							7725	7729	4
25							7715	7719	4

Lined Rib n°	C		
	Manual	Glider	Delta
1	8697	8705	8
2	8584	8592	8
3	8541	8546	5
4	8604	8613	9
5	8510	8515	5
6	8400	8403	3

Riser length

From bottom riser to top maillon on each branche in mm with 5daN (Manual tolerances +/-5mm)

Trimm speed setting	A1	A3	Stabi	B	Δt (= A1-B)	Attachment rod diameter [mm]
Manual	520	495	510	520	0	10
Glider	522	494	514	523	-1	

Full speed setting	Δa (=B-A1)	B-A3	Total speed Range ($\Delta a + \Delta t$)
Manual	140	120	140
Glider	142	118	141

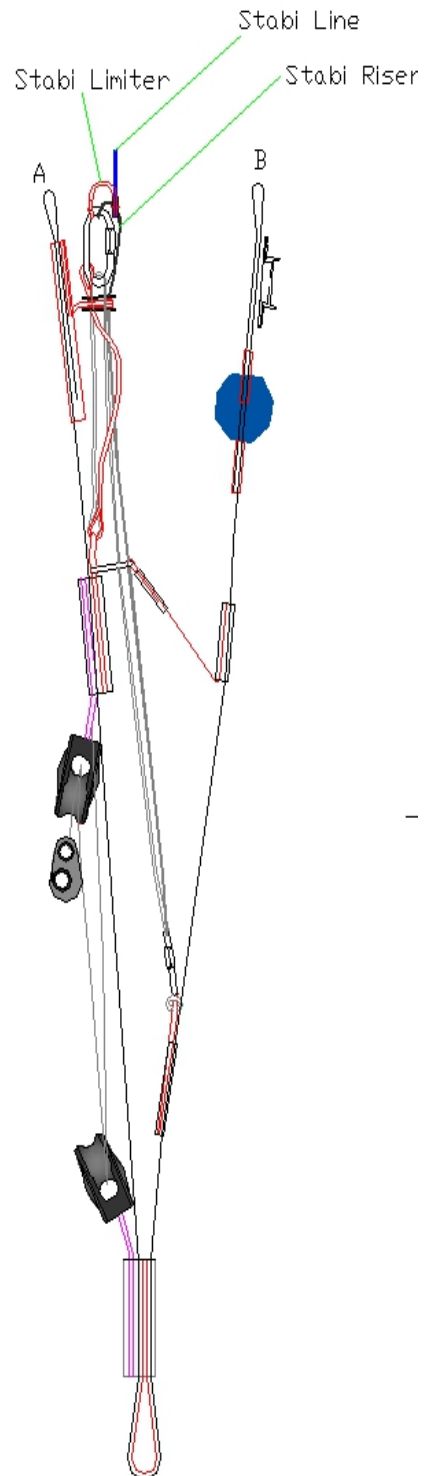
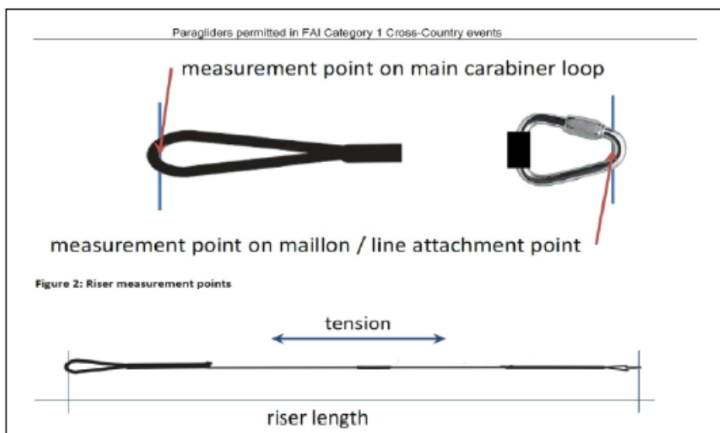
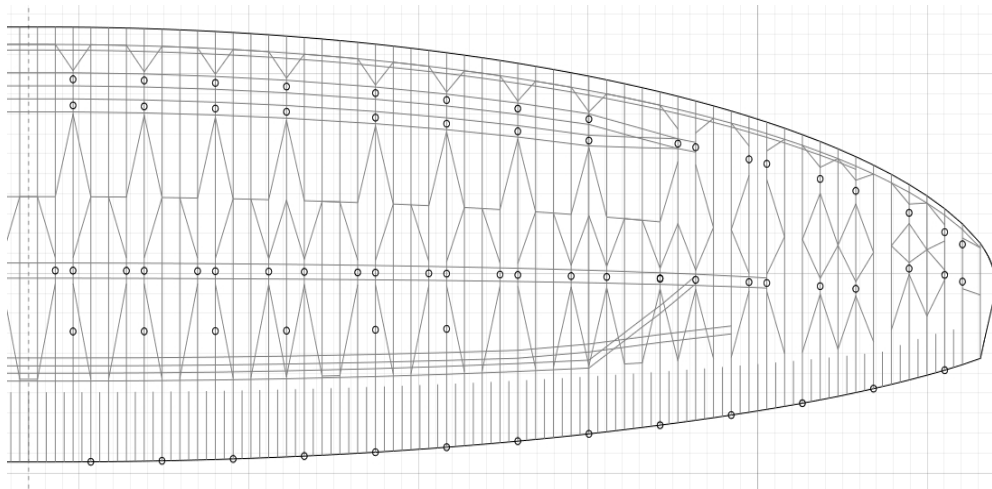


Table of lines quality										
Upper										
	A1		A2		B		C		BR	
1	Edlerid	8000/U-090	Edlerid	8000/U-090	Edlerid	8000/U-050	Edlerid	8000-025	Edlerid	8000-025
2	Edlerid	8000/U-070	Edlerid	8000/U-050	Edlerid		Edlerid		Edlerid	
3	Edlerid	8000/U-050	Edlerid		Edlerid		Edlerid		Edlerid	
4	Edlerid	8000/U-070	Edlerid		Edlerid		Edlerid		Edlerid	
5	Edlerid	8000/U-090	Edlerid		Edlerid		Edlerid		Edlerid	
6	Edlerid	8000/U-070	Edlerid		Edlerid		Edlerid		Edlerid	
7	Edlerid	8000/U-050	Edlerid		Edlerid		Edlerid	Edlerid		
8	Edlerid	8000/U-070	Edlerid		Edlerid		Edlerid	Edlerid		
9	Edlerid	8000/U-050			Edlerid	8000-025		Edlerid	Edlerid	
10	Edlerid			Edlerid	Edlerid					
11	Edlerid			Edlerid	Edlerid					
12	Edlerid			Edlerid	Edlerid					
13	Edlerid			Edlerid	Edlerid					
14	Edlerid			Edlerid	Edlerid					
15	Edlerid	8000-025		Edlerid	Edlerid					
16	Edlerid			Edlerid	Edlerid					
17	Edlerid			Edlerid	Edlerid					
18				Edlerid	Edlerid					
19				Edlerid	Edlerid					
20				Edlerid	Edlerid					
21				Edlerid	Edlerid					
22				Edlerid	Edlerid					
23			Edlerid	Edlerid						
24			Edlerid	Edlerid						
25			Edlerid	Edlerid						
H/middle										
	A		B		BR H/Middle					
1	Edlerid	8000/U-130		Edlerid	8000/U-050	Edlerid	800-025			
2	Edlerid			Edlerid		Edlerid				
3	Edlerid	8000/U-090		Edlerid		Edlerid				
4	Edlerid	8000/U-130		Edlerid		Edlerid				
5	Edlerid	8000/U-090		Edlerid		Edlerid				
6	Edlerid			Edlerid		Edlerid				
7	Edlerid	8000/U-070		Edlerid		Edlerid				
8	Edlerid			Edlerid		Edlerid				
9	Edlerid			Edlerid		Edlerid				
10	Edlerid	8000/U-050		Edlerid		Edlerid				
11	Edlerid			Edlerid		Edlerid				
STB/mid1			Edlerid	8000-025						
STB/mid2			Edlerid							
Middle										
	A		B		BR L/Middle					
1	Edlerid	8000/U-190		Edlerid	8000/U-090	Edlerid	8000/U-050			
2	Edlerid			Edlerid		Edlerid				
3	Edlerid			Edlerid		Edlerid				
4	Edlerid	8000/U-130		Edlerid	8000/U-070					
5	Edlerid			Edlerid	8000/U-050					
6	Edlerid			Edlerid	8000/U-050					
L/Middle										
	A		B		BR L/Middle					
1			Edlerid	8000/U-090						
Main										
	A		B		BR H/Main					
1	Edlerid	8000/U-360		Edlerid	8000/U-190	Edlerid	8000/U-090			
2	Edlerid			Edlerid	8000/U-130	BR L/Main				
3	Edlerid	8000/U-190		Edlerid	8000/U-050	Liros	PPSL160			
STB H/Main	Edlerid	8000/U-050								
STB L/Main	Liros	DSL70								

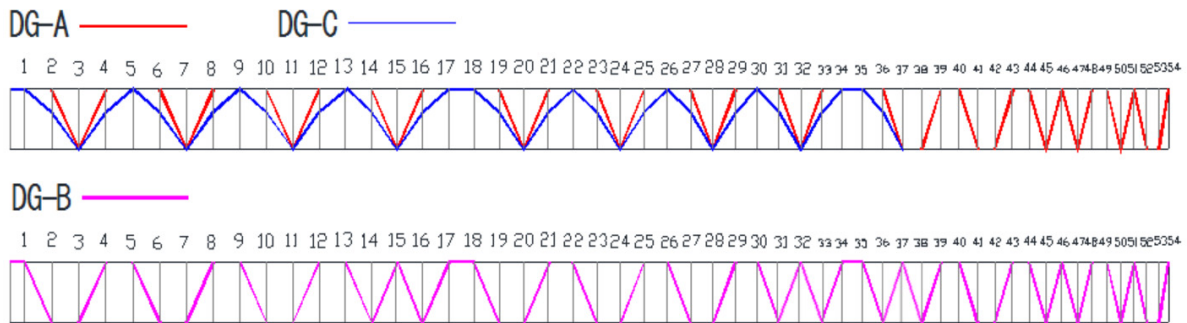
Upper and lower line loop reinforcement: all Edlerid 8000 lines have upper and lower reinforcements

Other pictures & drawings requested from test House

Diagonals, Hstraps and Mini Ribs (top view)



Diagonals (Front view)



Vent (Inlet) shape

