

Measurement request from test house for CCC certification From February 2016

Brand	Gin Gliders Inc.	Test house name	DHV
Model	Boomerang 11	CCC certification n°	GS-CCC-012-17
Size	SM	Certification date	27.12.2017
Serial n°	BG07-Q832P0003P		

Canopy dimensions

Position	Rib n° from center	Distance [mm]	Tension [daN]	Manual tolerances	Aspect ratio < 7.90 4*span / (chord A+2.5*Chord B)	
Full Span	x	13030	5	+/-2%	7,66	
1/2 Trailing Edge	x	6680	5	+/-1%		
Chord A	1	2125	1	+/-1%		
Chord B	22	1870	1	+/-1%	Scale factor	1,05

Number cells

109

Chord lenght, inlet position, tabs position measured from trailing edge.

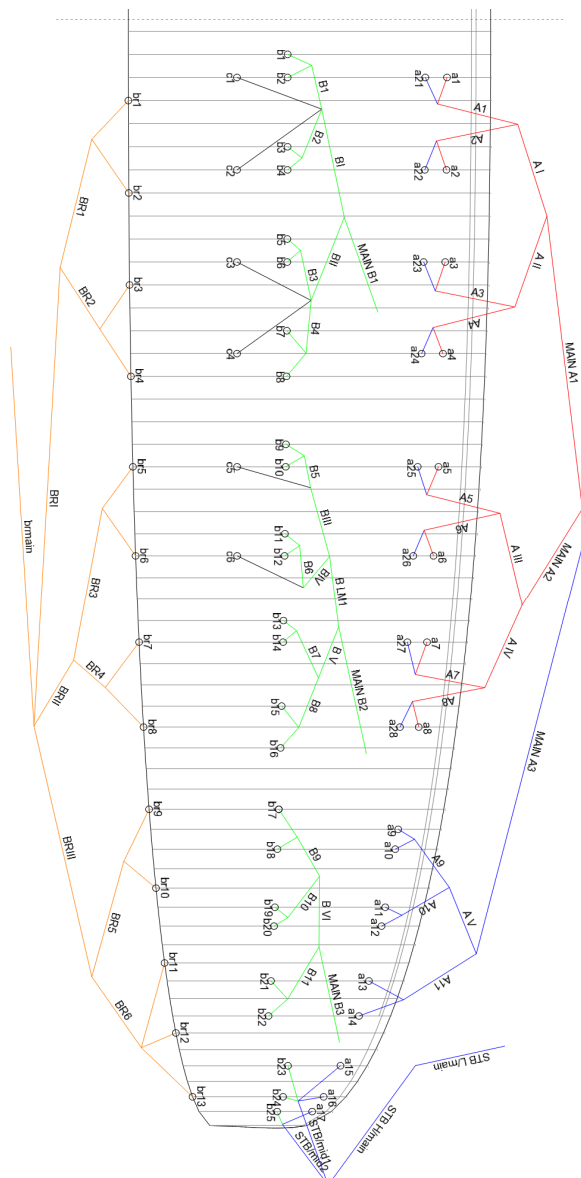
(The tab A & B & C can be on different rib, take care to specify it)

On first lined rib (from center)	Rib n° from center	Distance [mm]	Tension [daN]	Manual tolerances
Chord	2	2110	1	+/-1%
Top of inlet	2	2030	1	+/-1%
Bottom of inlet	2	2005	1	+/-1%
Tab Aa*	3	1826	1	+/-10mm
Tab Ab*	3	1717	1	+/-10mm
Tab B*	2	917	1	+/-10mm
Tab C*	3	638	1	+/-10mm

On last lined rib of Group 2 (from center)	Rib n° from center	Distance [mm]	Tension [daN]	Manual tolerances
Chord	32	1580	1	+/-1%
Top of inlet	32	1515	1	+/-1%
Bottom of inlet	32	1495	1	+/-1%
Tab Aa*	32	1372	1	+/-10mm
Tab Ab*	32	1289	1	+/-10mm
Tab B*	33	677	1	+/-10mm
Tab C*	24	550	1	+/-10mm

On last lined rib (stabilo, from center)	Rib n° from center	Distance [mm]	Tension [daN]	Manual tolerances
Chord	53	565	1	+/-1%
Tab A*	53	482	1	+/-10mm
Tab B*	53	341	1	+/-10mm

*Bridle (tab) position measurement:
end of trailing edge to center bridle (tab)



ABSOLUTE LINE LENGHT

Absolute line length from bottom riser to canopy in mm with 5daN of tension (Manual tolerances +/-10mm)

Lined Rib n°	A1			A2			B		
	Manual	Glider	Delta	Manual	Glider	Delta	Manual	Glider	Delta
1	8278	8273	-5	8256	8254	-2	8315	8314	-1
2	8160	8160	0	8137	8141	4	8256	8255	-1
3	8125	8121	-4	8103	8103	0	8155	8151	-4
4	8177	8171	-6	8157	8153	-4	8145	8144	-1
5	8093	8095	2	8073	8077	4	8119	8117	-2
6	7973	7977	4	7955	7959	4	8104	8101	-3
7	7927	7932	5	7909	7918	9	8139	8138	-1
8	7950	7956	6	7938	7943	5	8218	8214	-4
9	7780	7778	-2				8137	8133	-4
10	7740	7741	1				8078	8073	-5
11	7651	7651	0				7979	7972	-7
12	7639	7642	3				7973	7967	-6
13	7585	7585	0				7933	7931	-2
14	7580	7582	2				7918	7917	-1
15	7460	7456	-4				7934	7933	-1
16	7402	7399	-3				7991	7986	-5
17	7390	7387	-3				7815	7814	-1
18							7730	7733	3
19							7650	7653	3
20							7641	7647	6
21							7587	7597	10
22							7580	7588	8
23							7445	7447	2
24							7413	7416	3
25							7404	7407	3

Lined Rib n°	C		
	Manual	Glider	Delta
1	8347	8357	10
2	8237	8243	6
3	8195	8203	8
4	8255	8261	6
5	8162	8165	3
6	8055	8063	8

Riser length

From bottom riser to top maillon on each branche in mm with 5daN (Manual tolerances +/-5mm)

Trimm speed setting	A1	A3	Stabi	B	Δt (= A1-B)	Attachment rod diameter [mm]
Manual	520	495	510	520	0	10
Glider	519	492	513	521	-2	

Full speed setting	Δa (=B-A1)	B-A3	Total speed Range ($\Delta a + \Delta t$)
Manual	140	120	140
Glider	143	119	141

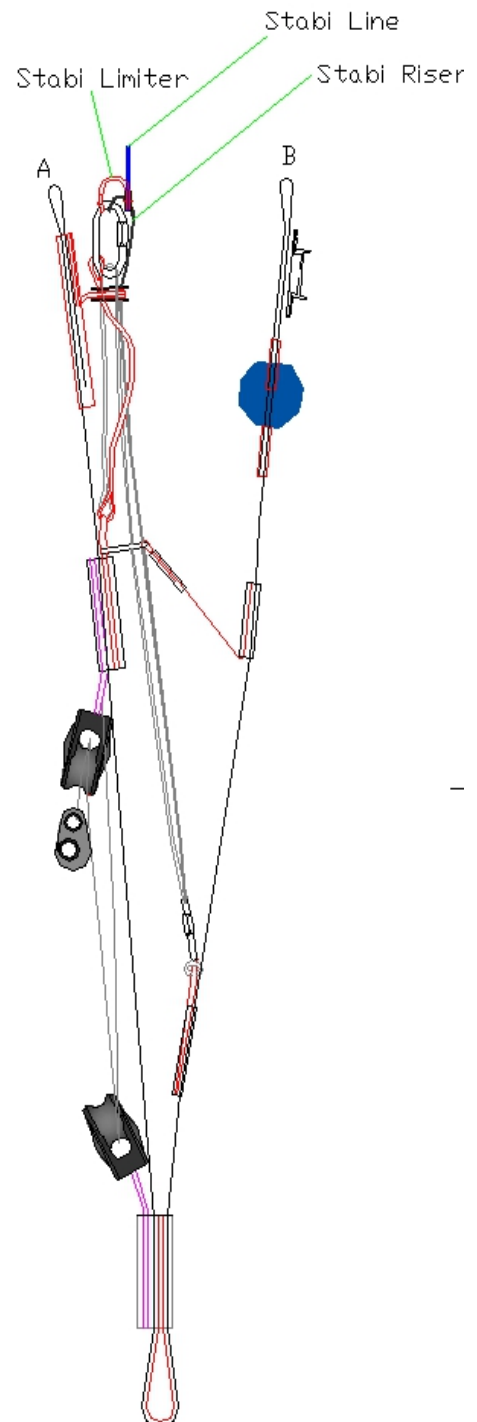
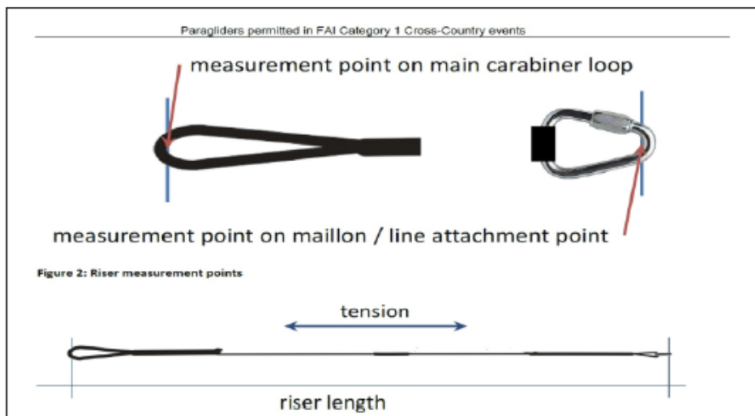
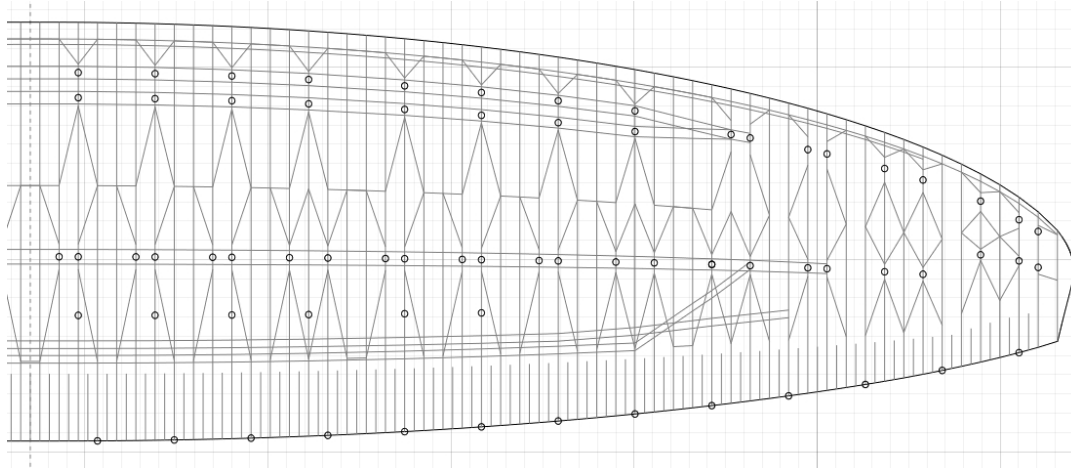


Table of lines quality											
Upper											
	A1		A2		B		C		BR		
1	Edlerid	8000/U-090	Edlerid	8000/U-090	Edlerid	8000/U-050	Edlerid	8000-025	Edlerid	8000-025	
2	Edlerid	8000/U-070	Edlerid	8000/U-050	Edlerid		Edlerid		Edlerid		Edlerid
3	Edlerid	8000/U-050	Edlerid		Edlerid		Edlerid		Edlerid		Edlerid
4	Edlerid	8000/U-070	Edlerid		Edlerid		Edlerid		Edlerid		Edlerid
5	Edlerid	8000/U-090	Edlerid		Edlerid		Edlerid		Edlerid		Edlerid
6	Edlerid	8000/U-070	Edlerid		Edlerid		Edlerid		Edlerid		Edlerid
7	Edlerid	8000/U-050	Edlerid		Edlerid		Edlerid	Edlerid	Edlerid		
8	Edlerid	8000/U-070	Edlerid		Edlerid		Edlerid	Edlerid	Edlerid		
9	Edlerid	8000/U-050			Edlerid	8000-025	Edlerid	Edlerid	Edlerid		
10	Edlerid			Edlerid	Edlerid						
11	Edlerid			Edlerid	Edlerid						
12	Edlerid			Edlerid	Edlerid						
13	Edlerid			Edlerid	Edlerid						
14	Edlerid			Edlerid	Edlerid						
15	Edlerid	8000-025		Edlerid	Edlerid		Edlerid	Edlerid	Edlerid		
16	Edlerid			Edlerid	Edlerid		Edlerid	Edlerid	Edlerid		
17	Edlerid			Edlerid	Edlerid		Edlerid	Edlerid	Edlerid		
18				Edlerid	Edlerid		Edlerid	Edlerid	Edlerid		
19				Edlerid	Edlerid		Edlerid	Edlerid	Edlerid		
20				Edlerid	Edlerid		Edlerid	Edlerid	Edlerid		
21				Edlerid	Edlerid		Edlerid	Edlerid			
22				Edlerid	Edlerid		Edlerid	Edlerid			
23			Edlerid	Edlerid	Edlerid	Edlerid					
24			Edlerid	Edlerid	Edlerid	Edlerid					
25			Edlerid	Edlerid	Edlerid	Edlerid					
H/middle											
	A				B				BR H/Middle		
1	Edlerid	8000/U-130		Edlerid	8000/U-050	Edlerid	800-025	Edlerid	800-025		
2	Edlerid			Edlerid		Edlerid					
3	Edlerid			8000/U-090		Edlerid		Edlerid			
4	Edlerid			8000/U-130		Edlerid		Edlerid			
5	Edlerid			8000/U-090		Edlerid		Edlerid			
6	Edlerid					Edlerid		Edlerid			
7	Edlerid	8000/U-070		Edlerid		Edlerid	Edlerid				
8	Edlerid			Edlerid		Edlerid					
9	Edlerid			Edlerid		Edlerid					
10	Edlerid	8000/U-050		Edlerid		Edlerid	Edlerid				
11	Edlerid			Edlerid		Edlerid					
STB/mid1			Edlerid	8000-025	Edlerid						
STB/mid2			Edlerid		Edlerid						
Middle											
	A				B				BR L/Middle		
1	Edlerid	8000/U-190		Edlerid	8000/U-090	Edlerid	8000/U-050	Edlerid	8000/U-050		
2	Edlerid			Edlerid		Edlerid					
3	Edlerid			Edlerid		Edlerid					
4	Edlerid			8000/U-130		Edlerid		Edlerid			
5	Edlerid					Edlerid		Edlerid			
6				Edlerid		Edlerid					
L/Middle											
					B						
1				Edlerid	8000/U-090						
Main											
	A				B				BR H/Main		
1	Edlerid	8000/U-360		Edlerid	8000/U-190	Edlerid	8000/U-090	Edlerid	8000/U-090		
2	Edlerid			Edlerid	8000/U-130	Edlerid	8000/U-050	Edlerid	8000/U-050		
3	Edlerid			8000/U-190	Edlerid	8000/U-050	Edlerid	8000/U-050	Edlerid		
STB H/Main	Edlerid	8000/U-050						Liros	PPSL160		
STB L/Main	Liros	DSL70									

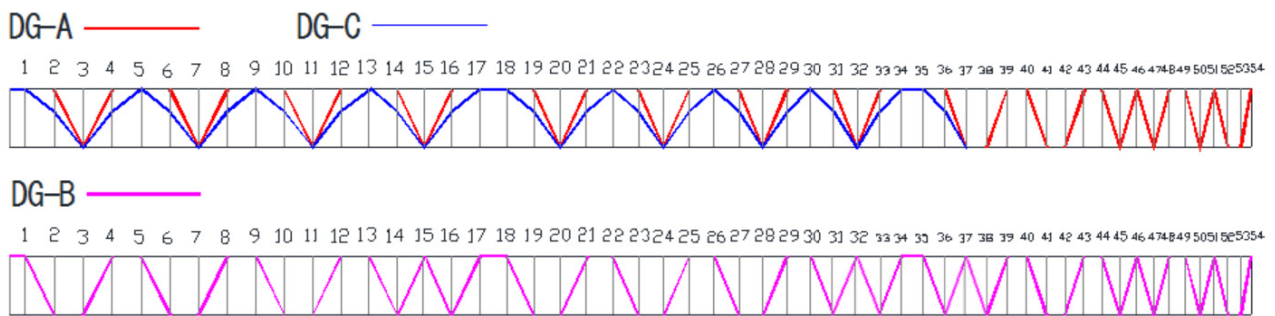
Upper and lower line loop reinforcement: all Edlerid 8000 lines have upper and lower reinforcements

Other pictures & drawings requested from test House

Diagonals, Hstraps and Mini Ribs (top view)



Diagonals (Front view)



Vent (Inlet) shape

