

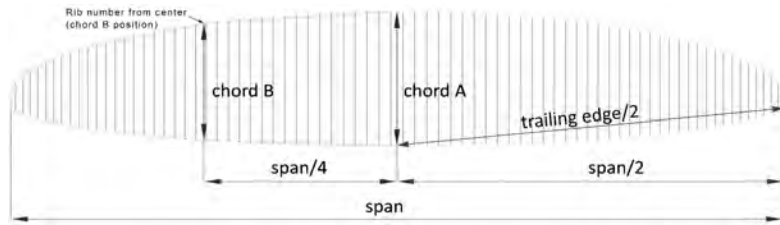
Measurement Report Template

CIVL CCC 2020 (Version 1.1)

Brand	FLOW	Size	ML	Test laboratory Cert. #	n/a
Model	SPECTRA2	Serial #	SP21MRE2101027	Certification date	25/11/2021

Canopy dimensions

Position	Rib # from center	Distance [mm]	Tension [daN]	Manual tolerances	Aspect ratio 4*span / (chord A+2.5*Chord B)	Number cells	Scale factor
Full Span	110	13821	5	2%	7.87	111	1.16953
1/2 Trailing Edge	55	7031	5	1%			
Chord A	1	2233	1	1%			
Chord B	25	1917	1	1%			



Chord length, inlet position, tabs position measured from trailing edge.

(The tab A & B & C can be on different rib, take care to specify it)

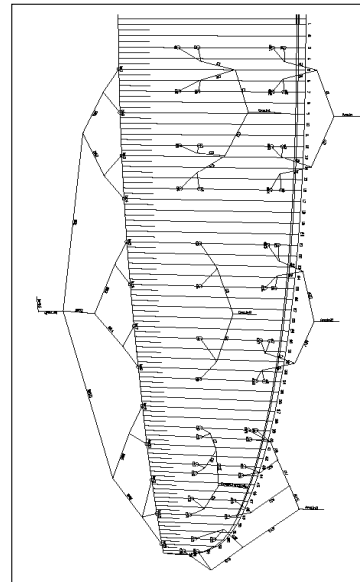
On first lined rib (from center)	Rib n° from center	Distance [mm]	Tension [daN]	Manual tolerances
Chord	3	2231	1	+/-10mm
Top of inlet	3	2141	5	+/-10mm
Bottom of inlet	3	2119	5	+/-10mm
Tab A*	3	1937	5	+/-10mm
Tab Ab*	3	1755	5	+/-10mm
Tab B*	3	946	5	+/-10mm
Tab C*	3	714	5	+/-10mm

On last lined rib of Group 2 (from center)	Rib n° from center	Distance [mm]	Tension [daN]	Manual tolerances
Chord	34	1632	1	+/-10mm
Top of inlet	34	1565	5	+/-10mm
Bottom of inlet	34	1549	5	+/-10mm
Tab Aa*	34	1412	5	+/-10mm
Tab Ab*	34	1260	5	+/-10mm
Tab B*	34	677	5	+/-10mm
Tab C*	34	n/a	5	+/-10mm

On last lined rib (stabilo, from center)	Rib n° from center	Distance [mm]	Tension [daN]	Manual tolerances
Chord	54	450	1	+/-10mm
Tab A*	54	378	5	+/-10mm
Tab B*	54	225	5	+/-10mm

*Bridle (tab) position measurement:

end of trailing edge to center bridle (tab)





Measurement Report Template
CIVL CCC 2020 (Version 1.0)

ABSOLUTE LINE LENGHT

Absolute line length from bottom riser to canopy in mm with 5daN of tension (Manual tolerances +/-10mm)
 For scaled sizes: lines are within +/-20mm of the initial size x scale factor

Number	A			A'			B		
	Manual	Glider	Delta	Manual	Glider	Delta	Manual	Glider	Delta
1	8140	8140	0	8112	8112	0	8147	8147	0
2	8009	8009	0	7973	7973	0	7991	7991	0
3	7970	7970	0	7939	7939	0	7931	7931	0
4	8043	8043	0	8009	8009	0	7958	7958	0
5	7947	7947	0	7921	7921	0	7933	7933	0
6	7782	7782	0	7753	7753	0	7775	7775	0
7	7695	7695	0	7667	7667	0	7682	7682	0
8	7712	7712	0	7688	7688	0	7702	7702	0
9	7446	7446	0	7426	7426	0	7475	7475	0
10	7394	7394	0				7430	7430	0
11	7310	7310	0				7331	7331	0
12	7310	7310	0				7320	7320	0
13	7257	7257	0				7270	7270	0
14	7278	7278	0				7282	7282	0
15	7164	7164	0				7197	7197	0
16	7183	7183	0				7226	7226	0

Number	C		
	Manual	Glider	Delta
1	8374	8374	0
2	8223	8223	0
3	8160	8160	0
4	8183	8183	0

Measurement Report Template CIVL CCC 2020 (Version 1.0)

Riser length

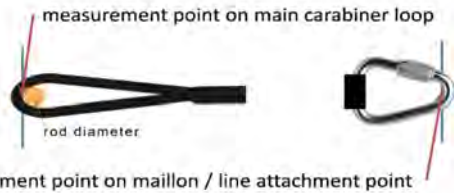
From bottom riser to top maillon on each branche in mm with 5daN (Manual tolerances +/-5mm)

Trimm speed setting	A1	A3	Stabi	B	Δt (= A1-B)	Attachment rod \varnothing (mm)
Manual	540	536	535	535	15	3
Glider	540	536	530	530	10	3

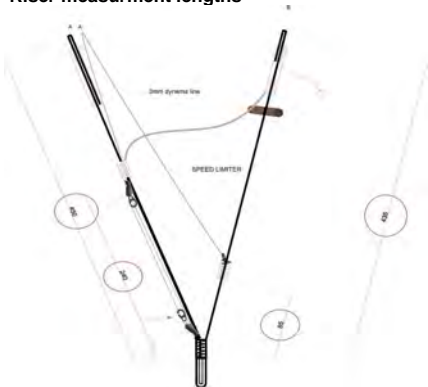
Full speed setting	Δa (=B-A1)	B-A3	Total speed range ($\Delta t + \Delta a$)
Manual	140	120	140
Glider	142	118	141

High speed setting	Δa (=B-A1)	Total high speed range > 100	
CCC	100	YES	100
Glider	102	YES	103

Riser measurement points



Riser measurement lengths



Riser drawing (manufacturer)





Measurement Report Template
 CIVL CCC 2020 (Version 1.0)

Table of line materials											
Upper											
	A		AB		B		C		BR		
1	Elderid	8000-090	Elderid	8000-090	Elderid	8000-050	Elderid	8000-050	Elderid	8000-025	
2	Elderid	8000-070	Elderid	8000-050	Elderid		Elderid		Elderid		
3	Elderid		Elderid		Elderid		Elderid				
4	Elderid	8000-090	Elderid	8000-090	Elderid		Elderid		Elderid		
5	Elderid	8000-090	Elderid	8000-050	Elderid		Elderid	Elderid			
6	Elderid	8000-070	Elderid		Elderid		Elderid	Elderid			
7	Elderid		Elderid		Elderid		Elderid	Elderid			
8	Elderid	8000-090	Elderid		Elderid		Elderid	Elderid			
9	Elderid	8000-050					Elderid	Elderid	Elderid		
10	Elderid						Elderid	Elderid			
11	Elderid						Elderid	Elderid			
12	Elderid						Elderid	Elderid			
13	Elderid			Elderid			Elderid				
14	Elderid			Elderid			Elderid				
15	Elderid	8000-025			Elderid		8000-025				
16	Elderid				Elderid						
H/middle											
	A		B		BR H/Middle						
1	Elderid	8000-130				8000-090	Elderid	8000-025	Elderid		
2	Elderid						Elderid		Elderid		
3	Elderid	Elderid					Elderid				
4	Elderid	8000-090					Elderid		8000-050	Elderid	
5	Elderid						Elderid		Elderid		
6	Elderid						Elderid		Elderid		
7	Elderid						Elderid		Elderid		
8	Elderid	8000-050					Elderid			Elderid	
9	Elderid		Elderid		Elderid						
10	Elderid		Elderid		Elderid						
11	Elderid	8000-025									
12	Elderid									Elderid	
13	Elderid										
Middle											
	A		B		BR L/Middle						
1	Elderid	8000-190				8000-130	Elderid	8000-050	Elderid		
2	Elderid						Elderid		Elderid		
3	Elderid						Elderid		Elderid		
4	Elderid						8000-130		Elderid	8000-090	Elderid
5	Elderid								Elderid	Elderid	
6	Elderid						8000-130		Elderid	8000-050	Elderid
7	Elderid						8000-050				
L/Middle											
	A		B		BR L/Middle						
1				Elderid	PPSL-160						
Main											
	A		B		BR H/Main						
1	Elderid	8000-360				8000-190	Elderid	8000-190	Elderid		
2	Elderid						Elderid		Elderid		
3	Elderid	8000-190				8000-130	Elderid	10N-200			

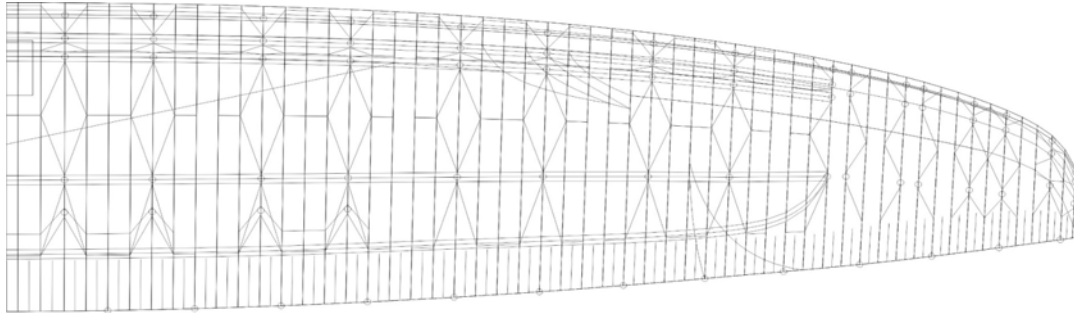
Upper and lower line loop reinforcement:

Measurement Report Template

CIVL CCC 2020 (Version 1.0)

Drawings and pictures

Diagonals, Hstraps and Mini Ribs (top view)



Diagonals (Front view)



Vent (Inlet) shape

