

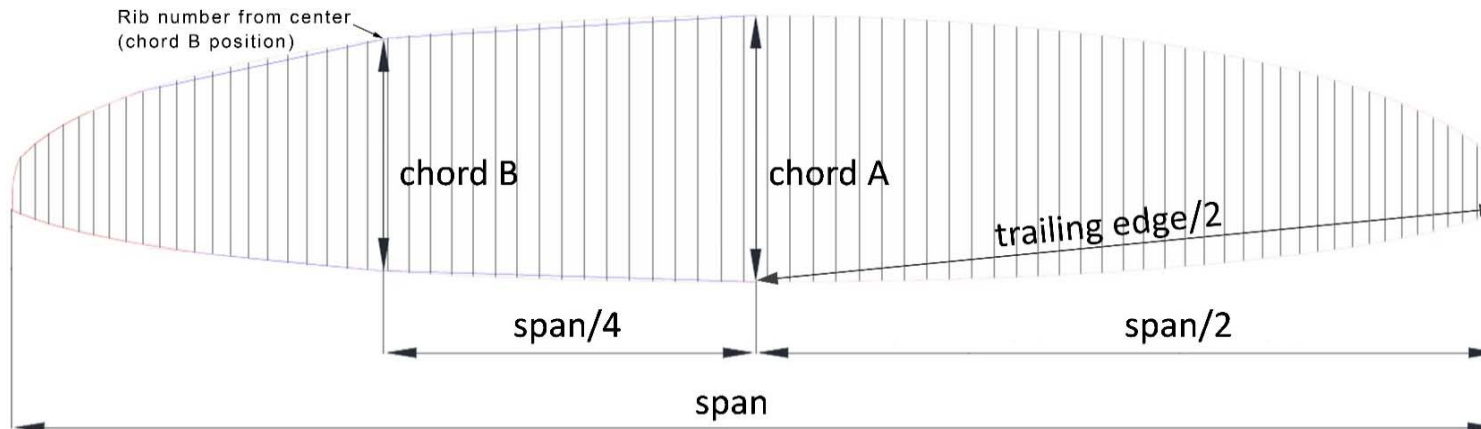
## Measurement Report Template

CIVL CCC 2020 (Version 1.1)

<b>Brand</b>	Gin Gliders Inc.	<b>Size</b>	L	<b>Test laboratory   Cert. #</b>	n/a
<b>Model</b>	Boomerang 12 (2023)	<b>Serial #</b>	BK08-Q8200289P	<b>Certification date</b>	24.01.2023

### Canopy dimensions

Position	Rib # from center	Distance [mm]	Tension [daN]	Manual tolerances	Aspect ratio $4 \cdot \text{span} / (\text{chord A} + 2.5 \cdot \text{Chord B})$	Number cells	Scale factor
Full Span		13819	5	+/-2%	<b>7,55</b>	<b>105</b>	<b>1,10</b>
1/2 Trailing Edge		7030	5	+/-1%			
Chord A		2235	1	+/-1%			
Chord B	23	2036	1	+/-1%			



## Chord length, inlet position, tabs position measured from trailing edge.

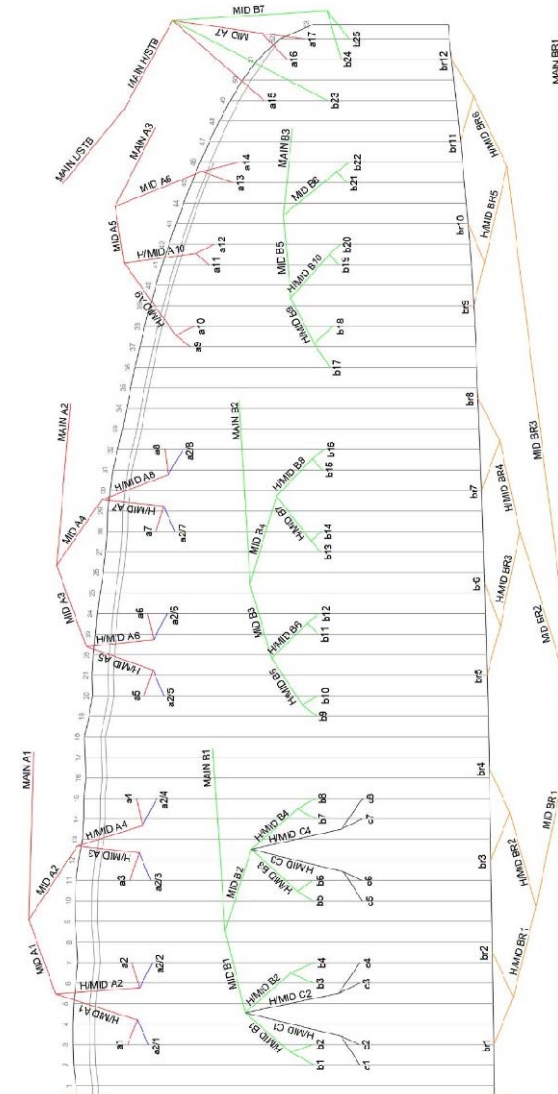
(The tab A & B & C can be on different rib, take care to specify it)

On first lined rib (from center)	Rib n° from center	Distance [mm]	Tension [daN]	Manual tolerances
Chord	2	2267	1	+/-1%
Top of inlet	2	2182	1	+/-1%
Bottom of inlet	2	2148	1	+/-1%
Tab Aa*	3	1996	1	+/-10mm
Tab Ab*	3	1878	1	+/-10mm
Tab B*	2	985	1	+/-10mm
Tab C*	2	735	1	+/-10mm

On last lined rib of Group 2 (from center)	Rib n° from center	Distance [mm]	Tension [daN]	Manual tolerances
Chord	32	1794	1	+/-1%
Top of inlet	32	1723	1	+/-1%
Bottom of inlet	32	1705	1	+/-1%
Tab Aa*	32	1565	1	+/-10mm
Tab Ab*	32	1477	1	+/-10mm
Tab B*	32	782	1	+/-10mm

On last lined rib (stabilo, from center)	Rib n° from center	Distance [mm]	Tension [daN]	Manual tolerances
Chord	52	705	1	+/-1%
Tab A*	52	601	1	+/-10mm
Tab B*	52	414	1	+/-10mm

\*Bridle (tab) position measurement:  
end of trailing edge to center bridle (tab)





## Measurement Report Template

### CIVL CCC 2020 (Version 1.0)

### ABSOLUTE LINE LENGHT

Absolute line length from bottom riser to canopy in mm with 5daN of tension (Manual tolerances +/-10mm)  
 For scaled sizes: lines are within +/-20mm of the initial size x scale factor

Number	A1			A2			B		
	Glider	Manual	Delta	Glider	Manual	Delta	Glider	Manual	Delta
25							7690	7687	3
24							7697	7693	4
23							7760	7755	5
22							7929	7928	1
21							7940	7933	7
20							7995	7995	0
19							8010	8008	2
18							8110	8103	7
17	7684	7678	6				8201	8197	4
16	7697	7694	3				8377	8379	-2
15	7779	7778	1				8355	8358	-3
14	7935	7927	8				8352	8351	1
13	7940	7933	7				8369	8371	-2
12	8006	8002	4				8424	8431	-8
11	8025	8019	6				8443	8440	3
10	8136	8134	2				8550	8547	3
9	8193	8186	7				8609	8604	5
8	8395	8399	-4	8380	8382	-3	8683	8679	4
7	8395	8402	-8	8376	8379	-3	8651	8647	4
6	8473	8475	-2	8458	8454	4	8620	8615	5
5	8620	8623	-3	8597	8598	-1	8634	8629	5
4	8714	8719	-5	8688	8694	-6	8662	8662	0
3	8666	8675	-9	8649	8651	-2	8668	8671	-3
2	8717	8716	1	8694	8692	2	8764	8768	-4
1	8842	8841	1	8816	8814	2	8821	8827	-6
1	8839	8841	-2	8814	8814	0	8822	8827	-5
2	8719	8716	3	8696	8692	4	8769	8768	1
3	8670	8675	-5	8651	8651	0	8672	8671	1
4	8715	8719	-5	8692	8694	-2	8664	8662	2
5	8624	8623	1	8598	8598	0	8637	8629	8
6	8478	8475	3	8457	8454	3	8624	8615	9
7	8400	8402	-2	8379	8379	0	8656	8647	9
8	8396	8399	-3	8386	8382	4	8689	8679	10
9	8183	8186	-3				8610	8604	6
10	8138	8134	4				8553	8547	6
11	8024	8019	5				8448	8440	8
12	8009	8002	7				8437	8431	6
13	7940	7933	7				8377	8371	6
14	7936	7927	9				8361	8351	10
15	7779	7778	1				8365	8358	7
16	7696	7694	2				8385	8379	6
17	7679	7678	1				8207	8197	10
18							8112	8103	9
19							8015	8008	7
20							8001	7995	6
21							7941	7933	8
22							7936	7928	8
23							7760	7755	5
24							7699	7693	6
25							7689	7687	2

Number	C		
	Glider	Manual	Delta
4	8708	8714	-6
3	8725	8723	2
2	8818	8814	4
1	8874	8874	-1
1	8877	8874	3
2	8818	8814	4
3	8719	8723	-4
4	8708	8714	-6

Number	C		
	Glider	Manual	Delta
8	8726	8724	2
7	8695	8697	-2
6	8664	8665	-1
5	8673	8678	-5
5	8676	8678	-2
6	8662	8665	-3
7	8692	8697	-5
8	8729	8724	5

# Measurement Report Template

## CIVL CCC 2020 (Version 1.0)

### Riser length

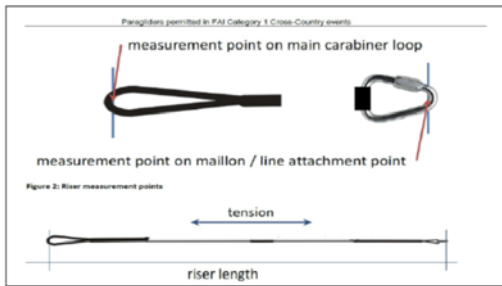
From bottom riser to top maillon on each branche in mm with 5daN (Manual tolerances +/-5mm)

Trimm speed setting	A	A'	Stabi	B	$\Delta t$ (= A1-B)	Attachment rod $\varnothing$ [mm]
Manual	520	485	505	520	0	10
Glider	520	487	507	519	-1	

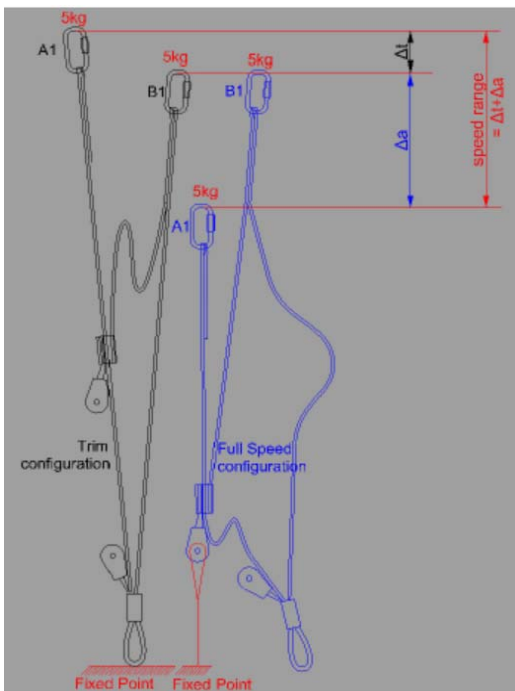
Full speed setting	$\Delta a$ (=B-A)	B-A'	Total speed range ( $\Delta t + \Delta a$ )
Manual	142	125	142
Glider	143	127	142

High speed setting	$\Delta a$ (=B-A1)	Total high speed range > 100
CCC	100	100
Glider	103	102

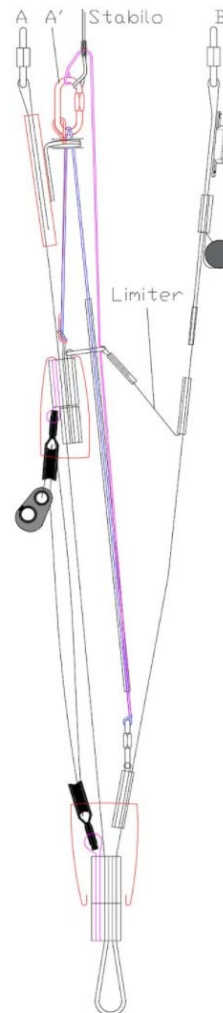
#### Riser measurement points



#### Riser measurement lengths



#### Riser drawing (manufacturer)



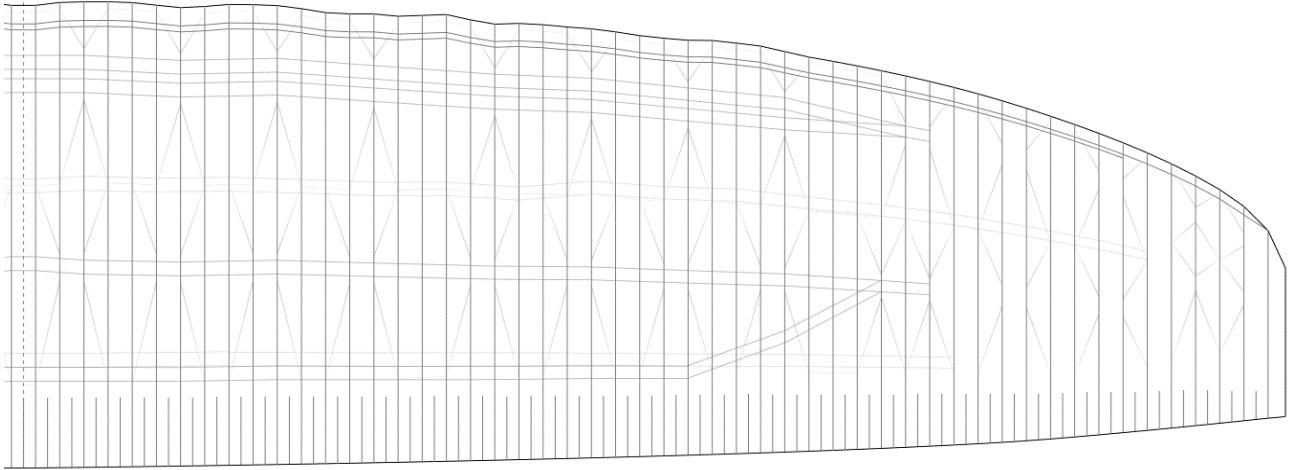


# Measurement Report Template

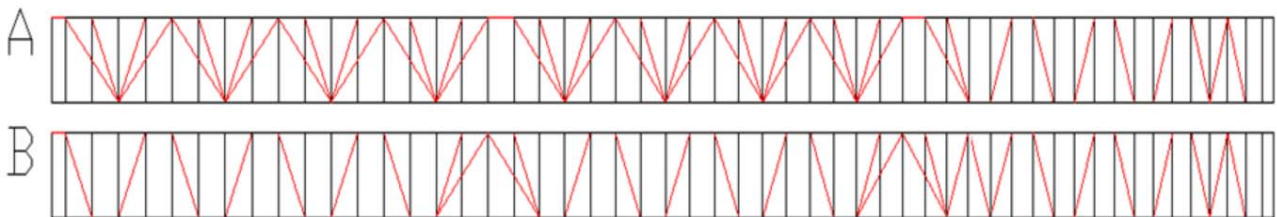
CIVL CCC 2020 (Version 1.0)

## Drawings and pictures

Diagonals, Hstraps and Mini Ribs (top view)



Diagonals (Front view)



Vent (Inlet) shape

