

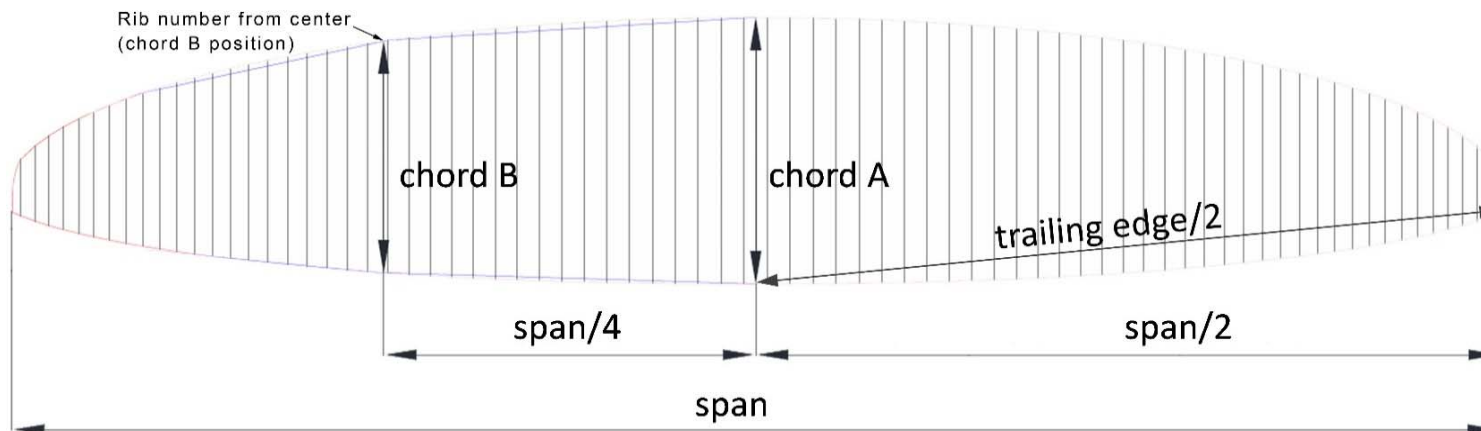
## Measurement Report Template

CIVL CCC 2020 (Version 1.1)

<b>Brand</b>	Gin Gliders Inc.	<b>Size</b>	ML	<b>Test laboratory   Cert. #</b>	n/a
<b>Model</b>	Boomerang 12 (2023)	<b>Serial #</b>	BK08-Q8200287P	<b>Certification date</b>	24.01.2023

### Canopy dimensions

Position	Rib # from center	Distance [mm]	Tension [daN]	Manual tolerances	Aspect ratio $4 \cdot \text{span} / (\text{chord A} + 2.5 \cdot \text{Chord B})$	Number cells	Scale factor
Full Span		13378	5	+/-2%	<b>7,54</b>	<b>105</b>	<b>1,06</b>
1/2 Trailing Edge		6811	5	+/-1%			
Chord A		2165	1	+/-1%			
Chord B	23	1972	1	+/-1%			



## Chord length, inlet position, tabs position measured from trailing edge.

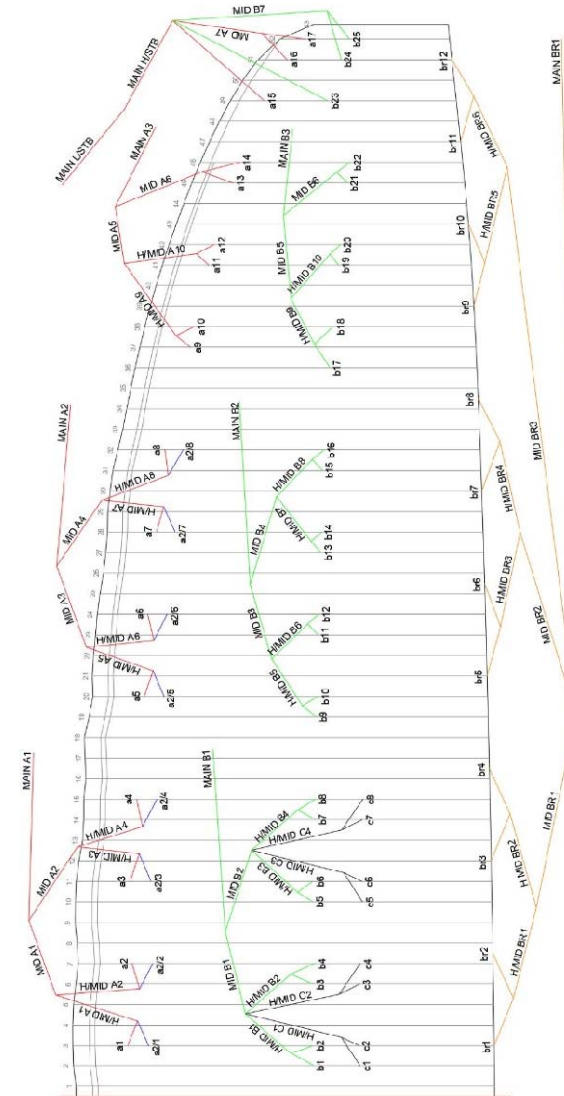
(The tab A & B & C can be on different rib, take care to specify it)

On first lined rib (from center)	Rib n° from center	Distance [mm]	Tension [daN]	Manual tolerances
Chord	2	2195	1	+/-1%
Top of inlet	2	2114	1	+/-1%
Bottom of inlet	2	2080	1	+/-1%
Tab Aa*	3	1933	1	+/-10mm
Tab Ab*	3	1818	1	+/-10mm
Tab B*	2	954	1	+/-10mm
Tab C*	2	712	1	+/-10mm

On last lined rib of Group 2 (from center)	Rib n° from center	Distance [mm]	Tension [daN]	Manual tolerances
Chord	32	1738	1	+/-1%
Top of inlet	32	1669	1	+/-1%
Bottom of inlet	32	1651	1	+/-1%
Tab Aa*	32	1515	1	+/-10mm
Tab Ab*	32	1430	1	+/-10mm
Tab B*	32	757	1	+/-10mm

On last lined rib (stabilo, from center)	Rib n° from center	Distance [mm]	Tension [daN]	Manual tolerances
Chord	52	683	1	+/-1%
Tab A*	52	582	1	+/-10mm
Tab B*	52	401	1	+/-10mm

\*Bridle (tab) position measurement:  
end of trailing edge to center bridle (tab)





## Measurement Report Template

### CIVL CCC 2020 (Version 1.0)

### ABSOLUTE LINE LENGHT

Absolute line length from bottom riser to canopy in mm with 5daN of tension (Manual tolerances +/-10mm)  
 For scaled sizes: lines are within +/-20mm of the initial size x scale factor

Number	A1			A2			B		
	Glider	Manual	Delta	Glider	Manual	Delta	Glider	Manual	Delta
25							7443	7444	-1
24							7450	7448	2
23							7512	7507	5
22							7681	7674	7
21							7686	7679	7
20							7734	7739	-5
19							7744	7751	-7
18							7841	7843	-2
17	7436	7436	0				7929	7935	-6
16	7447	7449	-2				8111	8112	-1
15	7529	7530	-1				8093	8090	3
14	7677	7673	4				8086	8083	3
13	7685	7679	6				8099	8103	-4
12	7750	7746	4				8156	8161	-5
11	7759	7762	-3				8162	8170	-8
10	7878	7874	4				8270	8274	-4
9	7924	7924	0				8331	8330	1
8	8128	8130	-2	8114	8114	0	8405	8403	2
7	8128	8132	-4	8109	8110	-1	8375	8372	3
6	8202	8203	-2	8186	8184	2	8347	8341	6
5	8349	8348	1	8329	8324	5	8356	8355	1
4	8435	8441	-6	8423	8417	6	8386	8387	-2
3	8401	8399	2	8383	8375	8	8396	8396	-1
2	8441	8439	2	8426	8416	10	8493	8491	2
1	8567	8562	5	8539	8536	3	8555	8549	6
1	8558	8562	-4	8534	8536	-2	8556	8549	7
2	8445	8439	6	8422	8416	6	8499	8491	8
3	8404	8399	5	8382	8375	7	8400	8396	4
4	8446	8441	5	8423	8417	6	8395	8387	8
5	8352	8348	4	8326	8324	2	8358	8355	3
6	8209	8203	6	8191	8184	7	8345	8341	4
7	8137	8132	5	8115	8110	5	8373	8372	1
8	8134	8130	4	8120	8114	6	8408	8403	5
9	7924	7924	0				8327	8330	-3
10	7873	7874	-1				8272	8274	-2
11	7761	7762	-1				8169	8170	-1
12	7751	7746	5				8162	8161	1
13	7686	7679	7				8102	8103	-1
14	7679	7673	6				8085	8083	2
15	7532	7530	2				8091	8090	1
16	7451	7449	2				8111	8112	-1
17	7442	7436	6				7934	7935	-1
18							7845	7843	2
19							7754	7751	3
20							7741	7739	2
21							7685	7679	6
22							7680	7674	6
23							7513	7507	6
24							7454	7448	6
25							7450	7444	6

Number	C		
	Glider	Manual	Delta
4	8436	8438	-2
3	8453	8447	6
2	8536	8536	0
1	8598	8595	3
1	8598	8595	3
2	8543	8536	7
3	8457	8447	10
4	8443	8438	5

Number	C		
	Glider	Manual	Delta
8	8446	8447	-1
7	8425	8421	4
6	8395	8391	4
5	8400	8403	-3
5	8401	8403	-2
6	8396	8391	5
7	8426	8421	5
8	8443	8447	-4

## Measurement Report Template

### CIVL CCC 2020 (Version 1.0)

### Riser length

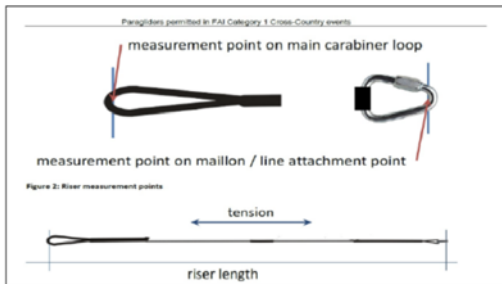
From bottom riser to top maillon on each branche in mm with 5daN (Manual tolerances +/-5mm)

Trimm speed setting	A	A'	Stabi	B	$\Delta t$ (= A1-B)	Attachment rod $\varnothing$ [mm]
Manual	520	485	505	520	0	10
Glider	519	487	508	517	-2	

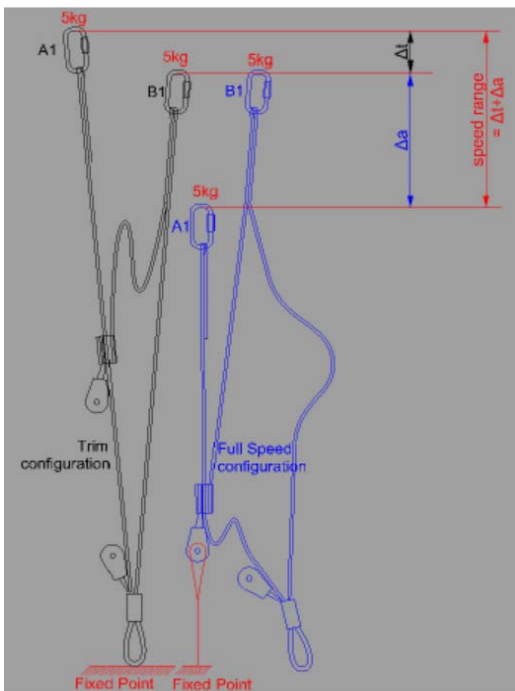
Full speed setting	$\Delta a$ (=B-A)	B-A'	Total speed range ( $\Delta t + \Delta a$ )
Manual	142	125	142
Glider	141	128	139

High speed setting	$\Delta a$ (=B-A1)	Total high speed range > 100
CCC	100	100
Glider	105	103

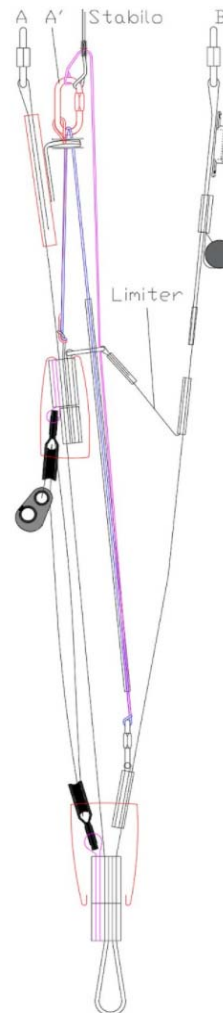
#### Riser measurement points



#### Riser measurement lengths



#### Riser drawing (manufacturer)





## Measurement Report Template

### CIVL CCC 2020 (Version 1.0)

**Table of line materials**

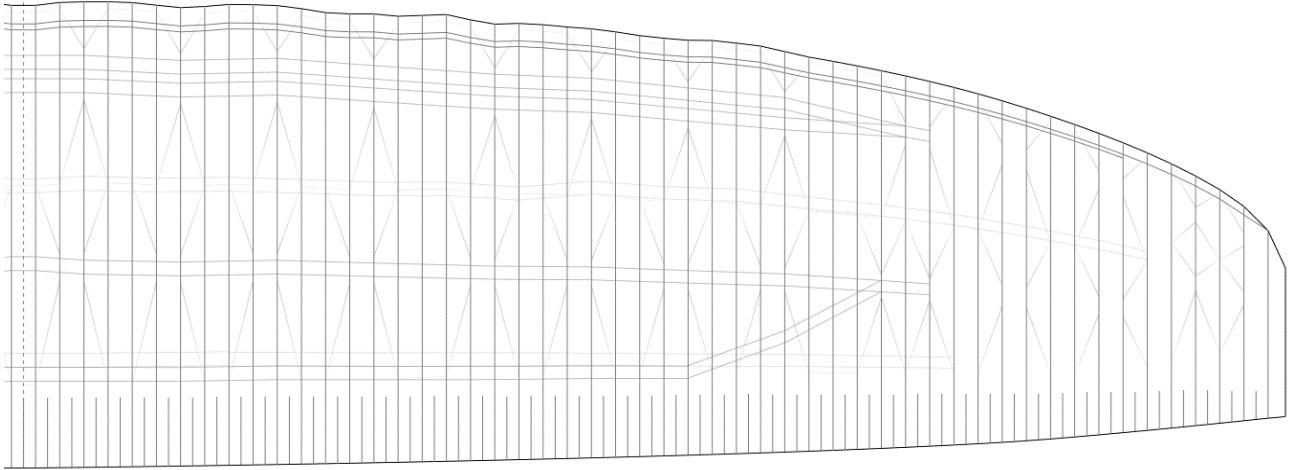
Table of line materials																					
<b>Upper</b>																					
		A1		A2		B		C		BR											
1	Edlerid	8001-090	Edlerid	8001-090	Edlerid	8001-050	8001-050	Edlerid	8001-025	Edlerid	8001-025										
2	Edlerid	8001-070	Edlerid	8001-050	Edlerid			Edlerid		Edlerid											
3	Edlerid	8001-070	Edlerid		Edlerid			Edlerid		Edlerid											
4	Edlerid	8001-070	Edlerid		Edlerid			Edlerid		Edlerid											
5	Edlerid	8001-090	Edlerid		Edlerid			Edlerid		Edlerid											
6	Edlerid	8001-070	Edlerid		Edlerid			Edlerid		Edlerid											
7	Edlerid	8001-070	Edlerid		Edlerid			Edlerid		Edlerid											
8	Edlerid	8001-070	Edlerid		Edlerid			Edlerid		Edlerid											
9	Edlerid	8001-050						Edlerid		8001-050			Edlerid	8001-025	Edlerid	8001-025					
10	Edlerid			Edlerid		Edlerid															
11	Edlerid			Edlerid		Edlerid															
12	Edlerid			Edlerid		Edlerid															
13	Edlerid			Edlerid		Edlerid															
14	Edlerid	8000-025					Edlerid	8000-025			Edlerid										
15	Edlerid						Edlerid				Edlerid										
16	Edlerid						Edlerid				Edlerid										
17	Edlerid						Edlerid				Edlerid										
18																Edlerid	8000-025				
19		Edlerid	Edlerid																		
20		Edlerid	Edlerid																		
21		Edlerid	Edlerid																		
22		Edlerid	Edlerid																		
23		Edlerid	Edlerid																		
24		Edlerid	Edlerid																		
25		Edlerid	Edlerid																		
<b>H/middle</b>																					
		A		B				BR H/Middle													
1	Edlerid	8001-130			Edlerid	8001-050	8001-050	Edlerid	8001-025	Edlerid	8001-025										
2	Edlerid				Edlerid			Edlerid													
3	Edlerid				Edlerid			Edlerid													
4	Edlerid				Edlerid			Edlerid													
5	Edlerid	8001-090							Edlerid	8001-050		Edlerid									
6	Edlerid								Edlerid			Edlerid									
7	Edlerid								Edlerid			Edlerid									
8	Edlerid								Edlerid			Edlerid									
9	Edlerid	8001-070													Edlerid	8001-050		Edlerid			
10	Edlerid														Edlerid			Edlerid			
<b>Middle</b>																					
		A		B											BR L/Middle						
1	Edlerid	8001-190				Edlerid	8001-090											Edlerid			8001-050
2	Edlerid					Edlerid												Edlerid			
3	Edlerid				Edlerid	Edlerid															
4	Edlerid				Edlerid	Edlerid															
5	Edlerid	8001-090			Edlerid	8001-070															
6	Edlerid	8001-050			Edlerid	8001-050															
7	Edlerid	8001-025			Edlerid	8001-025															
<b>Main</b>																					
		A		B				BR H/Main													
1	Edlerid	8001-340			Edlerid	8001-190		Edlerid	8001-090												
2	Edlerid				Edlerid	8001-190															
3	Edlerid				8001-190	Edlerid		8001-090													
STB H/Main	Edlerid	8001-070									GIN	TGL220									
STB L/Main	Liros	PPSL-065																			

# Measurement Report Template

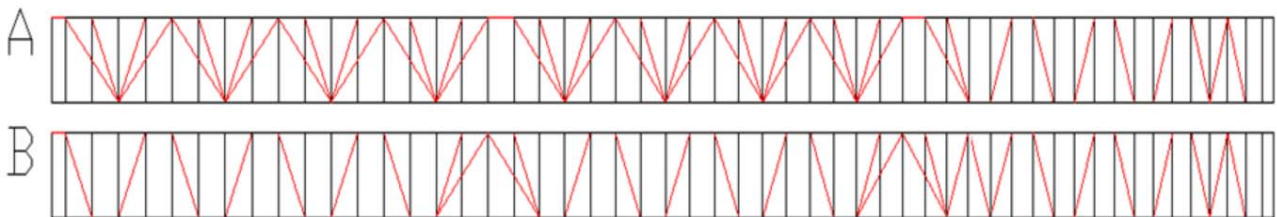
CIVL CCC 2020 (Version 1.0)

## Drawings and pictures

Diagonals, Hstraps and Mini Ribs (top view)



Diagonals (Front view)



Vent (Inlet) shape

