

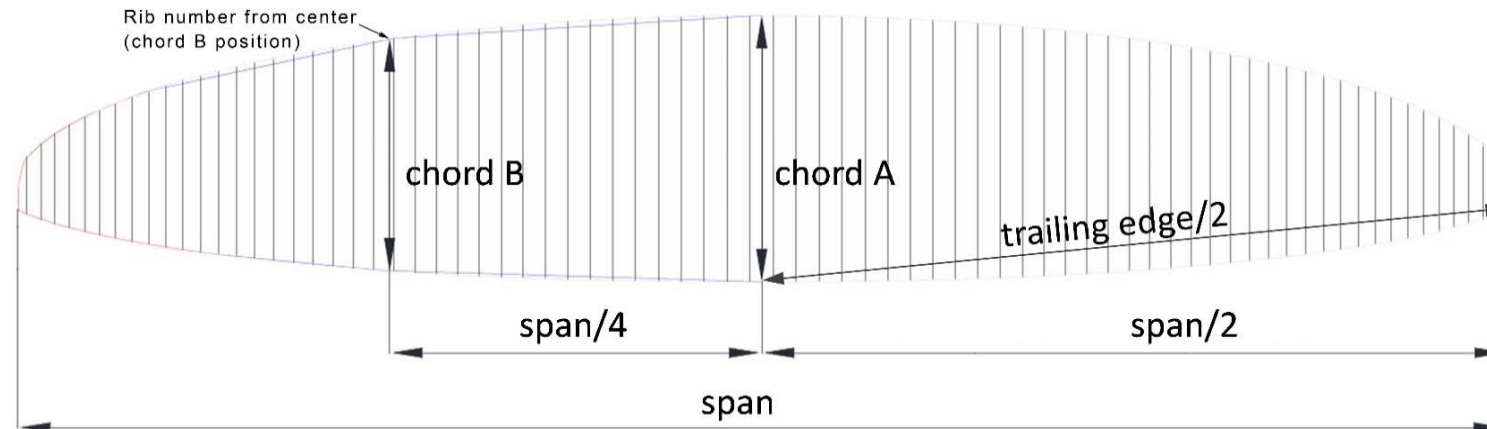
## Measurement Report Template

CIVL CCC 2020 (Version 1.1)

<b>Brand</b>	Gin Gliders Inc.	<b>Size</b>	SM	<b>Test laboratory   Cert. #</b>	n/a
<b>Model</b>	Boomerang 12	<b>Serial #</b>	BK06-Q8200285P	<b>Certification date</b>	06.07.2021

### Canopy dimensions

Position	Rib # from center	Distance [mm]	Tension [daN]	Manual tolerances	Aspect ratio $4 \cdot \text{span} / (\text{chord A} + 2.5 \cdot \text{Chord B})$	Number cells	Scale factor
Full Span		13071	5	+/-2%	<b>7,47</b>	<b>105</b>	<b>1,02</b>
1/2 Trailing Edge		6557	5	+/-1%			
Chord A		2138	1	+/-1%			
Chord B	23	1946	1	+/-1%			



## Chord length, inlet position, tabs position measured from trailing edge.

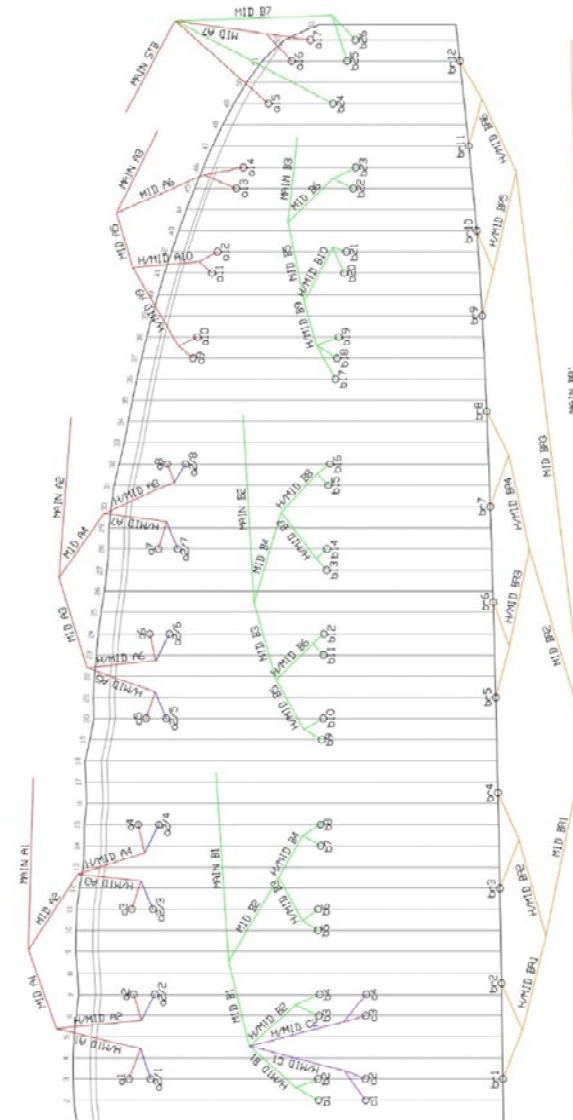
(The tab A & B & C can be on different rib, take care to specify it)

On first lined rib (from center)	Rib n° from center	Distance [mm]	Tension [daN]	Manual tolerances
Chord	2	2159	1	+/-1%
Top of inlet	2	2067	1	+/-1%
Bottom of inlet	2	2035	1	+/-1%
Tab Aa*	3	1897	1	+/-10mm
Tab Ab*	3	1788	1	+/-10mm
Tab B*	2	945	1	+/-10mm
Tab C*	2	699	1	+/-10mm

On last lined rib of Group 2 (from center)	Rib n° from center	Distance [mm]	Tension [daN]	Manual tolerances
Chord	32	1706	1	+/-1%
Top of inlet	32	1637	1	+/-1%
Bottom of inlet	32	1615	1	+/-1%
Tab Aa*	32	1486	1	+/-10mm
Tab Ab*	32	1398	1	+/-10mm
Tab B*	32	739	1	+/-10mm

On last lined rib (stabilo, from center)	Rib n° from center	Distance [mm]	Tension [daN]	Manual tolerances
Chord	52	671	1	+/-1%
Tab A*	52	569	1	+/-10mm
Tab B*	52	401	1	+/-10mm

\*Bridle (tab) position measurement:  
end of trailing edge to center bridle (tab)





## Measurement Report Template

### CIVL CCC 2020 (Version 1.0)

### ABSOLUTE LINE LENGHT

Absolute line length from bottom riser to canopy in mm with 5daN of tension (Manual tolerances +/-10mm)  
 For scaled sizes: lines are within +/-20mm of the initial size x scale factor

Number	A1			A2			B		
	Manual	Glider	Delta	Manual	Glider	Delta	Manual	Glider	Delta
26							7269	7261	-8
25							7271	7266	-5
24							7327	7333	6
23							7518	7523	5
22							7520	7531	11
21							7583	7585	2
20							7595	7597	2
19							7687	7696	9
18							7718	7720	2
17	7262	7266	4				7776	7780	4
16	7274	7273	-1				7929	7933	4
15	7351	7357	6				7909	7917	8
14	7483	7490	7				7903	7910	7
13	7488	7490	2				7921	7927	6
12	7558	7558	0				7977	7984	7
11	7573	7570	-3				7988	7992	4
10	7682	7682	0				8090	8095	5
9	7730	7737	7				8143	8153	10
8	7944	7943	-1	7938	7934	-4	8214	8222	8
7	7946	7942	-4	7934	7928	-6	8185	8192	7
6	8016	8013	-3	8005	8000	-5	8155	8160	5
5	8157	8155	-2	8143	8141	-2	8168	8176	8
4	8249	8242	-7	8234	8227	-7	8200	8209	9
3	8207	8204	-3	8193	8190	-3	8210	8218	8
2	8248	8244	-4	8234	8228	-6	8304	8310	6
1	8367	8361	-6	8351	8347	-4	8360	8368	8
1	8367	8364	-3	8351	8345	-6	8360	8369	9
2	8248	8244	-4	8234	8232	-2	8304	8313	9
3	8207	8209	2	8193	8187	-6	8210	8220	10
4	8249	8244	-5	8234	8236	2	8200	8209	9
5	8157	8156	-1	8143	8142	-1	8168	8176	8
6	8016	8013	-3	8005	8001	-4	8155	8156	1
7	7946	7943	-3	7934	7929	-5	8185	8194	9
8	7944	7946	2	7938	7937	-1	8214	8220	6
9	7730	7734	4				8143	8151	8
10	7682	7686	4				8090	8097	7
11	7573	7574	1				7988	7996	8
12	7558	7561	3				7977	7984	7
13	7488	7491	3				7921	7930	9
14	7483	7488	5				7903	7909	6
15	7351	7348	-3				7909	7917	8
16	7274	7277	3				7929	7934	5
17	7262	7264	2				7776	7784	8
18							7718	7720	2
19							7687	7688	1
20							7595	7598	3
21							7583	7588	5
22							7520	7528	8
23							7518	7513	-5
24							7327	7323	-4
25							7271	7265	-6
26							7269	7260	-9

Number	C		
	Manual	Glider	Delta
4	8276	8277	1
3	8294	8294	0
2	8375	8378	3
1	8433	8435	2
1	8431	8435	4
2	8378	8378	0
3	8296	8294	-2
4	8275	8277	2

## Measurement Report Template CIVL CCC 2020 (Version 1.0)

### Riser length

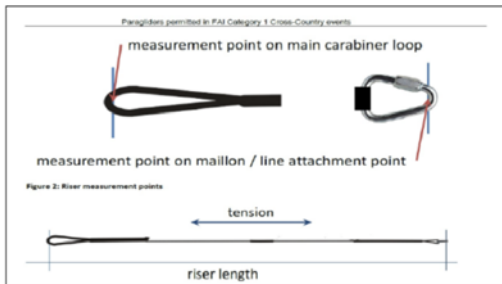
From bottom riser to top maillon on each branche in mm with 5daN (Manual tolerances +/-5mm)

Trimm speed setting	A1	A3	Stabi	B	$\Delta t$ (= A1-B)	Attachment rod $\varnothing$ [mm]
Manual	520	487		520	0	10
Glider	523	491		522	-1	

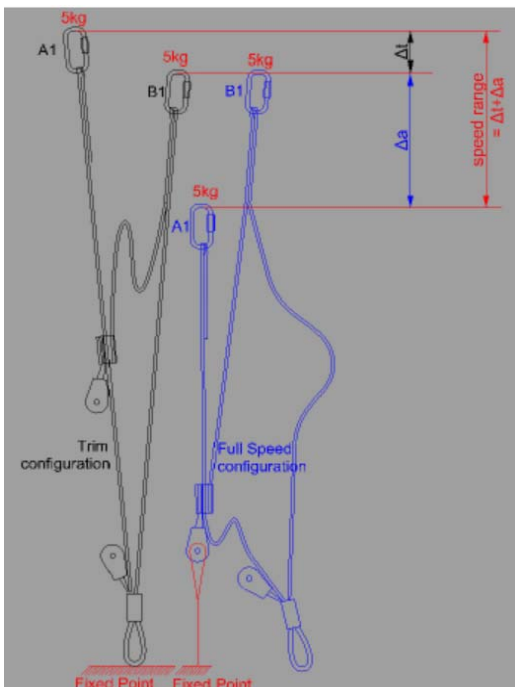
Full speed setting	$\Delta a$ (=B-A1)	B-A3	Total speed range ( $\Delta t + \Delta a$ )
Manual	140	125	140
Glider	143	130	142

High speed setting	$\Delta a$ (=B-A1)	Total high speed range > 100
CCC	100	100
Glider	104	103

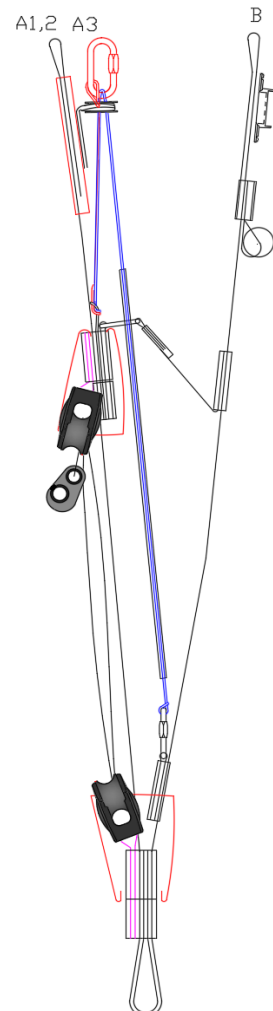
#### Riser measurement points



#### Riser measurement lengths



#### Riser drawing (manufacturer)





## Measurement Report Template

### CIVL CCC 2020 (Version 1.0)

**Table of line materials**

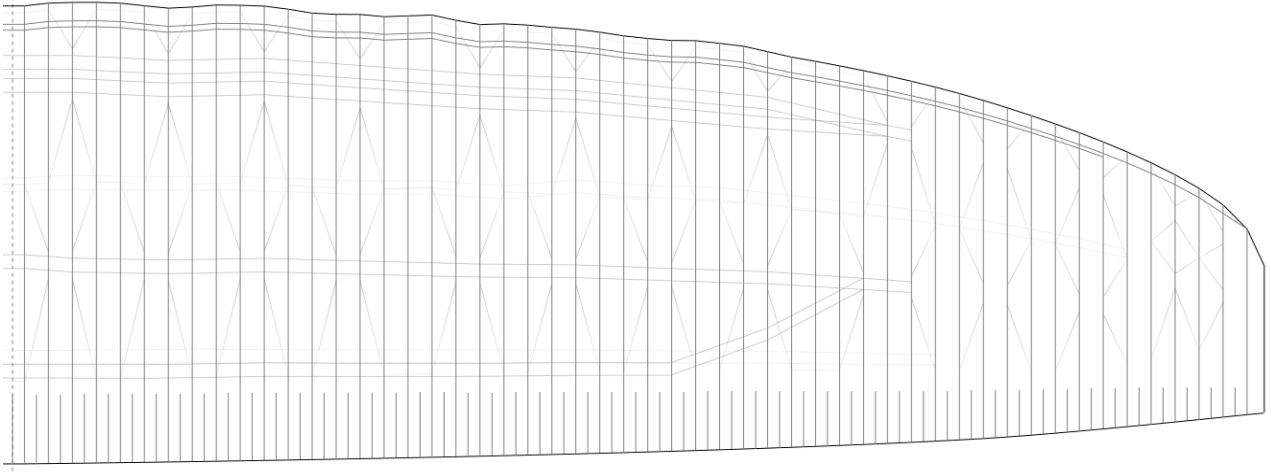
Table of line materials										
Upper										
	A1		A2		B		C		BR	
1	Edlerid	8001-090	Edlerid	8001-090	Edlerid	8001-050	Edlerid	8001-025	Edlerid	8001-025
2	Edlerid	8001-070	Edlerid	8001-050	Edlerid		Edlerid		Edlerid	
3	Edlerid	8001-070	Edlerid		Edlerid		Edlerid		Edlerid	
4	Edlerid	8001-070	Edlerid		Edlerid		Edlerid		Edlerid	
5	Edlerid	8001-090	Edlerid		Edlerid		Edlerid	Edlerid		
6	Edlerid	8001-070	Edlerid		Edlerid		Edlerid	Edlerid		
7	Edlerid	8001-070	Edlerid		Edlerid		Edlerid	Edlerid		
8	Edlerid	8001-070	Edlerid		Edlerid		Edlerid	Edlerid		
9	Edlerid	8001-050			Edlerid		Edlerid	Edlerid	Edlerid	
10	Edlerid			Edlerid	Edlerid		Edlerid	Edlerid		
11	Edlerid			Edlerid	Edlerid		Edlerid	Edlerid		
12	Edlerid			Edlerid	Edlerid		Edlerid	Edlerid		
13	Edlerid			Edlerid	Edlerid		Edlerid	Edlerid		
14	Edlerid	Edlerid		Edlerid	Edlerid		Edlerid			
15	Edlerid	8000-025		Edlerid	Edlerid		Edlerid	Edlerid		
16	Edlerid			Edlerid	Edlerid		Edlerid	Edlerid		
17	Edlerid			Edlerid	Edlerid		Edlerid	Edlerid		
18					Edlerid	8000-025	Edlerid			
19			Edlerid		Edlerid					
20			Edlerid		Edlerid					
21			Edlerid		Edlerid					
22			Edlerid		Edlerid					
23			Edlerid		Edlerid					
24			Edlerid		Edlerid					
25			Edlerid		Edlerid					
H/middle										
	A		B		BR H/Middle					
1	Edlerid	8001-130		Edlerid	8001-050	Edlerid	8001-025			
2	Edlerid			Edlerid		Edlerid				
3	Edlerid			Edlerid		Edlerid				
4	Edlerid			Edlerid		Edlerid				
5	Edlerid	8001-090		Edlerid		Edlerid		Edlerid		
6	Edlerid			Edlerid		Edlerid				
7	Edlerid			Edlerid		Edlerid				
8	Edlerid	8001-070		Edlerid		Edlerid	Edlerid			
9	Edlerid			Edlerid		Edlerid				
10	Edlerid			Edlerid		Edlerid				
Middle										
	A		B		BR L/Middle					
1	Edlerid	8001-190		Edlerid	8001-090	Edlerid	8001-050			
2	Edlerid			Edlerid		Edlerid				
3	Edlerid			Edlerid		Edlerid				
4	Edlerid			Edlerid	Edlerid					
5	Edlerid			8001-090	Edlerid	8001-070		Edlerid		
6	Edlerid			8001-050	Edlerid	8001-050		Edlerid		
7	Edlerid				Edlerid	Edlerid				
Main										
	A		B		BR H/Main					
1	Edlerid	8001-340		Edlerid	8001-190	Edlerid	8001-090			
2	Edlerid			Edlerid	8001-190	<b>BR L/Main</b>				
3	Edlerid			8001-190	Edlerid	8001-090	GIN	TGL220		
STB Main	Edlerid	8001-070								

# Measurement Report Template

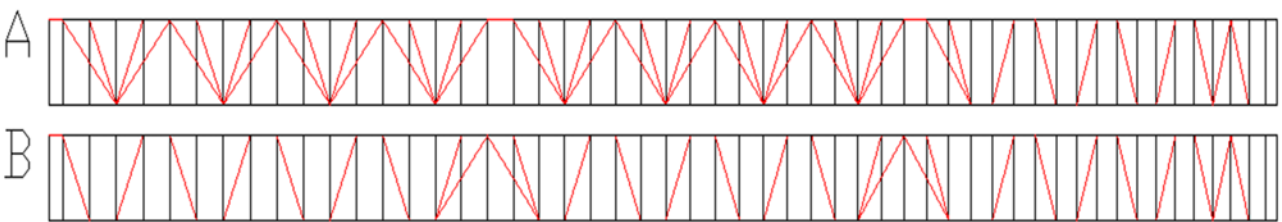
CIVL CCC 2020 (Version 1.0)

## Drawings and pictures

Diagonals, Hstraps and Mini Ribs (top view)



Diagonals (Front view)



Vent (Inlet) shape

