

Name: **Guru**
 Size: **M**
 Maximum load (kg): **115**
 Serial Number: **XD90M0211867871**

Place: **UP-International workshop**
 Date of measurement: **18.01.2019**

Manufacture name: **UP-International GmbH**
 Representative: **Frantisek Pavousek – head R&D**
 Street: **Kreuzeckbahnstrasse 7**
 Place: **Garmisch-Partenkirchen**
 Country: **Germany**

Canopy dimensions

	Rib nb from Center	Measure mm:	Tension:	Tolerances (%):
Full Span:		13435	5daN	2
1/2 Trailing Edge		6833	5daN	1
Chord A	1	2226	1daN	1
Chord B	21	1965	1daN	1

Aspect ratio: - 4*Span / (Chord A + 2.5* Chord B)
7.52

number of cells
98

Chord length, inlet position, tabs position measured from trailing edge

First fully lined Rib of group 1 (from center)

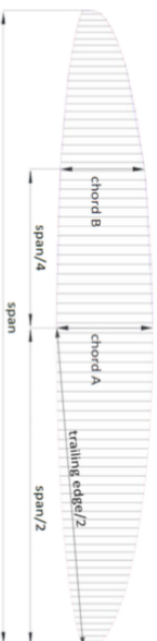
	Rib n	Distance	Tension	Tolerances
Chord:	1	2215	1daN	+/-10mm
Top of Inlet:	1	2154	5daN	+/-10mm
Bottom of Inlet:	1	2118	5daN	+/-10mm
Tab Aa:	2	1937	5daN	+/-10mm
Tab Ab:	2	1796	5daN	+/-10mm
Tab B:	2	957	5daN	+/-10mm
Tab C:	2	714	5daN	+/-10mm

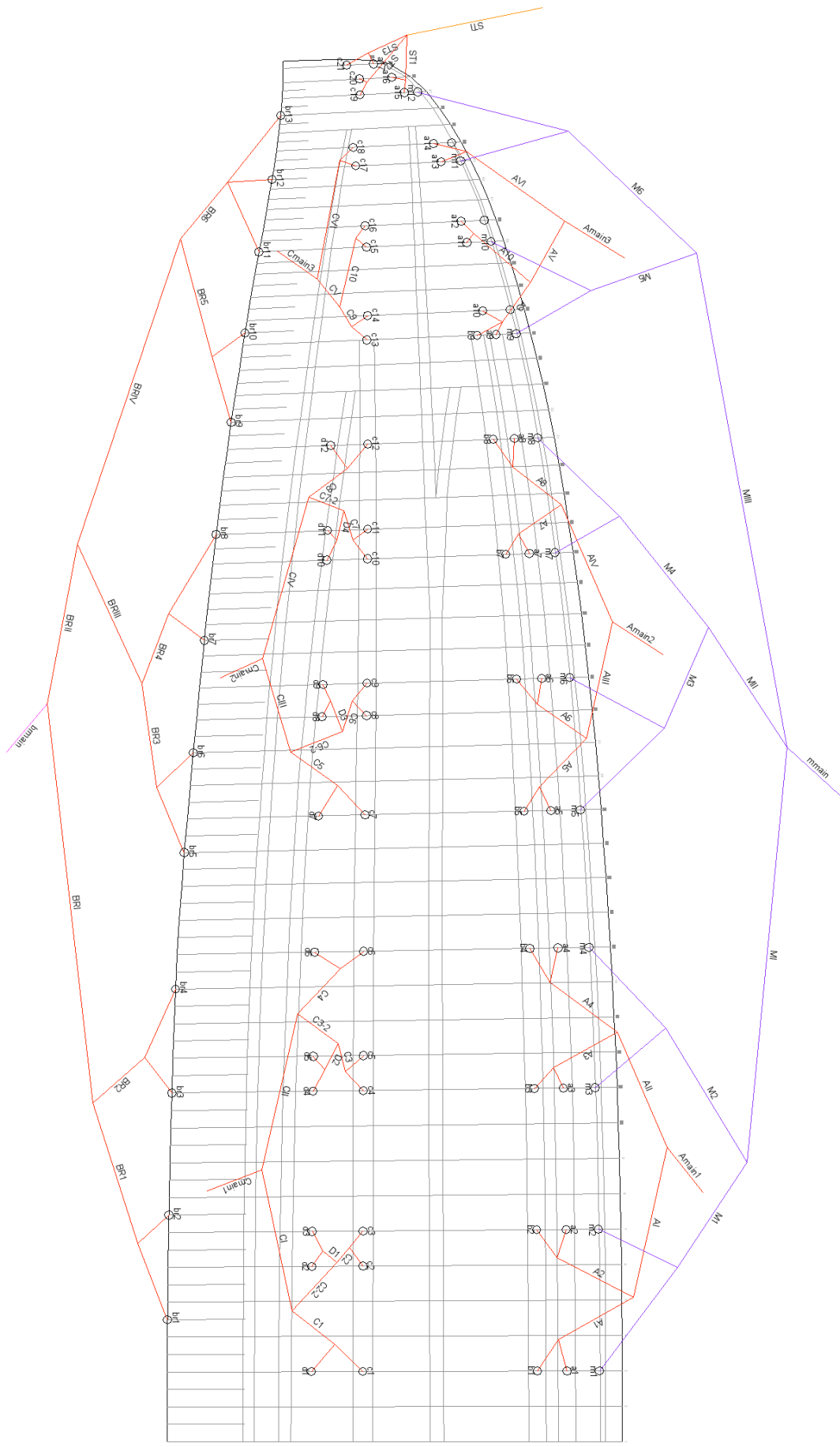
First fully lined Rib of group 1 (from center)

	Rib number	Distance	Tension	Tolerances
Chord:	1	2023	1daN	+/-10mm
Top of Inlet:	1	1959	5daN	+/-10mm
Bottom of Inlet:	1	1928	5daN	+/-10mm
Tab Aa:	2	1764	5daN	+/-10mm
Tab Ab:	2	1637	5daN	+/-10mm
Tab B:	2	872	5daN	+/-10mm
Tab C:	2	649	5daN	+/-10mm

First fully lined Rib of group 1 (from center)

	Rib n.	Distance	Tension	Tolerances
Chord:	1	511	1daN	+/-10mm
Tab A:	1	450	5daN	+/-10mm
Tab B:	1	322	5daN	+/-10mm





PG Measurement report

Measurement of flight test sample

Canopy dimension report



Serial number: **XD90M021867871**
 Manufacturer: **UP-International GmbH**

Sample name: **GURU M**

Execution date: **18.01.2019**
 Responsible: **Michal Šneberg**

Execution place: **UP**

Total length with rizer (mm)

main brake lines diff color than A,B,C main line?

Yes

	A			B			C			D			Folding lines		
	Manual	Sample left side	Diff	Manual	Sample	Diff	Manual	Sample	Diff	Manual	Sample	Diff	Manual	Sample	Diff
1	8246	8243	-3	8212	8211	-1	8188	8188	0	8259	8281	2	8600	8600	
2	8117	8115	-2	8079	8081	2	8086	8081	-5	8161	8159	-2	8450	8450	
3	8075	8071	-4	8040	8088	-2	8068	8067	-1	8143	8143	0	8391	8391	
4	8120	8120	0	8088	8088	0	8029	8027	-2	8109	8102	-7	8416	8416	
5	8004	8000	-4	7976	7973	-3	8030	8032	2	8108	8103	-5	8171	8171	
6	7858	7859	1	7834	7834	0	8085	8087	2	8156	8160	4	8013	8013	
7	7789	7792	3	7768	7767	-1	7974	7975	1	8052	8049	-3	7823	7823	
8	7839	7834	-5	7821	7817	-4	7844	7844	0	7926	7922	-4	7910	7910	
9	7597	7595	-2	7573	7576	3	7828	7830	2	7907	7905	-2	7684	7684	
10	7533	7535	2				7760	7764	4	7839	7836	-3	7549	7549	
11	7439	7433	-6				7755	7757	2	7831	7828	-3	7439	7439	
12	7429	7431	2				7801	7801	0	7888	7885	-3	7421	7421	
13	7363	7361	-2				7603	7595	-8						
14	7382	7355	-7				7565	7560	-5						
15	7234	7230	-4				7476	7470	-6						
16	7228	7225	-3				7468	7464	-4						
17	7225	7220	-5				7410	7408	-2						
18							7408	7400	-8						
19							7253	7250	-3						
20							7240	7236	-4						
21							7256	7253	-3						

Measurement total rizer length (mm)

Total length rizer (with carabines)	
Rizers	trim accelerated
A	560 419
AllI	560 490
B	560 560
Acc	140 560
Trimmer	n/a

Total length without carabines	
Rizers	trim accelerated
A	535 395
AllI	540 470
B	560 560
Acc	140 560
Trimmer	n/a

Number of rizers	3
Tolerance (mm)	5

Stable line attached to rizers:
 Speed system configuration max travel in flight:

Amanix3	Touch
---------	-------

Carabiner (mm)	25
Tolerance (mm)	2

