



13265 North US 183 Suite A
Austin, TX 78750
+1 512 774 4359
Austin.iFLYworld.com

December 9, 2013

FAI Parachuting Commission
Maison du Sport International
Av. De Rhodanie 54
CH-1007 - Lausanne
Switzerland

Dear FAI Parachuting Commission:

Enclosed is a bid for iFLY Austin to host the First FAI World Cup of Indoor Skydiving for Formation Skydiving and Artistic Events. The USPA has taken a neutral position in regards to our bid, wishing us well but refusing to sanction the bid until further review by its board of directors as to whether or not indoor skydiving falls within USPA's prevue. Furthermore, the NAA is unable to submit our bid for liability reasons, but does endorse iFLY's application as an Organizing Entity. However, in 2013 the IPC/FAI embraced indoor skydiving and is entertaining bids for indoor competitions. Since the appropriate organizations are unable to submit a bid at this point in time, iFLY Austin is asking the IPC to consider our direct bid to host the First FAI World Cup of Indoor Skydiving.

iFLY Austin is thrilled at the prospect of being host of the First World Cup of Indoor Skydiving. Through its partnership with the IBA (International Bodyflight Association), iFLY has played a major role in promoting indoor skydiving. Our drive to promote and grow the sport of indoor skydiving and competitions is just one of many reasons that make iFLY Austin an optimal host.

iFly Austin boasts the latest in wind tunnel technology housed in a spacious 3-floor facility including two large multi-purpose meeting spaces, offices, classrooms and team rooms. Located in the great city of Austin, Texas, The Live Music Capital of the World, iFLY Austin has all of the amenities of a major city. Nearby are two international airports, many restaurants, shopping centers, hotels, conference centers, parks, museums and other points of interest.

Furthermore, iFLY Austin is staffed with a team that has extensive experience participating in and organizing major outdoor skydiving competitions and events such as FAI World Championships, US Nationals, and World Records. We are confident that we can provide an extraordinary competition experience and we are committed to making it a remarkable event. Thank you in advance for consideration.

Sincerely,

A handwritten signature in cursive script, appearing to read "Erin J. Horton".

Erin Horton
Manager & Project Lead

1st FAI World Cup of Indoor Skydiving

iFLY Austin Bid



1. Event Organisers

1.1 IPC Delegate

Kirk Verner
101 Canterbury Road
Southern Pines, NC 28387
USA
Phone: +1 504 604 9740
Fax: +1 540 604 9741
E-mail: uspa@uspa.org

1.2 Organising Committee

iFLY Austin Manager and Host: Erin Horton
Skyventure Regional Manager and Host: Axel Zohmann
US IPC Delegate: Kirk Verner

2. Event Details

2.1 Full Name of the Event

1st FAI World Cup of Indoor Skydiving

2.2 Letters of Approval

See Appendix A for letters of approval from the City of Cedar Park, Austin Sports Commission, and Cedar Park Chamber of Commerce

2.3 Disciplines to be Contested

Formation Skydiving:

- 4-way
- 4-way Womens
- VFS 4-way
- iFLY Austin welcomes 8-way FS if the dive pool is conducive to a 14 foot (4.3 meter) wind tunnel.
- If accepted as an official discipline by the committee, iFLY Austin would welcome the opportunity to host VFS 2-way.

Artistic:

- Freestyle
- Freefly

Juniors Categories for all contested disciplines that allow for such a category.

2.4 Event Dates

Proposed dates are 11-16 November 2014

11 November – Arrival of Judges, Start of Judges Training, Arrival of Delegations, Official Practice Period

12 November – Judges Conference, Arrival of Delegations, Official Practice Period

13 November – Judges Conference, Arrival of Delegations, Official Practice Period, Opening Ceremony

14-16 November – Competition

16 November – Awards, Closing Ceremony, Departure of Delegations

2.5 Location of Event

iFLY Austin is located in the Northwest area of Austin, Texas next to a large retail shopping center, at:

13265 North Hwy 183

Austin, TX 78750

USA

iFLY Austin features a 14 foot (4.3 meter) diameter, 50 foot (15.24 meter) tall flight chamber with floor to ceiling glass for the first 14 vertical feet (4.27 meter) and is the first tunnel equipped with air conditioning. The doors to the antechamber are able to open and close during flight, which maximizes efficiency of flight time. The tunnel is capable of speeds of up to 160 mph (258 km/h) and is powered by Skyventure's highly efficient patented components.

2.6 Access to Location by Road, Rail and Air

There are two international airports and one regional airport within a reasonable driving distance to iFLY Austin:

Austin Bergstrom Airport

22 miles / 35 km / 24 minute drive to iFLY Austin

Super Shuttle offers service to iFLY Austin in addition to taxi services

San Antonio International Airport

89 miles / 143 km / 1 h 23 minute drive to iFLY Austin

Killeen-Fort Hood Regional Airport

56.1 miles / 90 km / 59 minute drive to iFLY Austin

Car rental companies servicing the above airports include: Enterprise, Alamo, Avis, Dollar, Thrifty, Hertz, National, Budget

There is very limited rail service in the Austin area. It is not a recommended means of transportation.

2.7 Weather Conditions

Weather conditions do not affect the ability to conduct Indoor Skydiving activities at iFLY Austin as it is completely protected from the elements and also features air conditioning in the flight chamber. Austin weather is beautiful year round with November offering pleasant sunny days and enjoyable temperatures to visitors.

2.8 Airspace Restrictions

Not applicable.

2.9 Landowner Restrictions

There are none for iFLY Austin's operation. iFLY Austin has a very strong relationship with the owner of the Austinville shopping center it is located in. Please see Appendix B for the letter of approval from the landowner.

2.10 Details of Comprehensive Insurance

iFLY Austin has comprehensive liability insurance. FAI and IPC, as needed, will be added as named parties to this policy prior to the start of the event. See Appendix C for the letter showing coverage.

2.11 Details of Insurance Required by Participants

iFLY Austin does not normally require flyers to carry third party liability insurance, which is typical of outdoor skydiving. If the IPC considers this essential we can make arrangements for competitors to meet this requirement.

Medical/Repatriation insurance is not required to fly at iFLY Austin or in the state of Texas. iFLY Austin strongly advises participants to purchase the appropriate travel or medical insurance prior to participation in the event.

2.12 Proposed Budget, Sources of Income and Entry Fees

All budgeting and pricing has been forecasted using the current rules for outdoor skydiving in regards to the number of rounds, judge panel requirements, etc. iFLY Austin would appreciate the opportunity to revise this information, if necessary, pending the publication of official rules for indoor skydiving.

See Appendix D for the proposed budget details.

Competitor entry fees include Opening Ceremonies, Competition costs, lunch each day during competition (Nov 14-16), Closing Ceremonies and Banquet, Social Night, Entertainment, promotional/gift selections, any additional re-performance and/or tie-breaking performance, and discounted pre-event flight time.

Competitors will be responsible for their own accommodation, some meals, travel and transportation. Accommodation recommendations will be provided.

Entry fee for Heads of Delegation, Team Leaders and Other Delegation Members includes Opening Ceremonies, lunch each day during competition (Nov 14-16), Closing Ceremonies and Banquet, Social Night, Entertainment, and promotional/gift selections.

Entry fees:

Formation Skydiving	\$560 + FAI/IPC Sanction fee*
Artistic	\$610 + FAI/IPC Sanction fee*
Member of Official Delegation	\$360 + FAI/IPC Sanction fee*
Additional Event	\$125

**FAI/IPC Sanction fee pending publication of rules. iFLY Austin asks that the FAI/IPC consider keeping these fees to a minimum in order to keep entry fees down and promote participation in Indoor Skydiving Competition. iFLY Austin proposes that the FAI/IPC consider a maximum fee of €25 for junior categories and €50 for all others.*

If a competitor is registered for more than one event (i.e. 4-way and 8-way) the additional event fee will apply to each additional event instead of the full entry fee.

The registration fee for additional accompanying persons, who are not a part of the official delegation or require a sanction fee to be paid for, will be \$195 USD and will include lunch on days of competition, Opening Ceremony, Awards, Closing Ceremonies, banquet dinner and drinks, social events and entertainment.

2.13 Facilities

iFLY Austin is a state of the art wind tunnel offering all of the newest technology in indoor skydiving. The facility consists of three floors and includes many multi-purpose rooms. See Appendix E for floor plan layouts.

Registration will be conducted in the large lobby complete with six networked computers and a fully integrated, modern, and customized system capable of handling all accounting and tracking. There is ample registration and counter space as well as numerous telephones and printers.



Judging panels will be housed in a large private office on the third floor with ample space for the judging team, video playback monitors, printer and other supplies. An electronic image dubbing area should not be necessary as all flight chamber video is immediately transferred to a video server from which the files can be accessed or transferred.

There are many networked computers and printers located throughout the building on all floors that are accessible to competition staff.

There will be many areas setup for competitor use. The meeting space on the 2nd floor will be dedicated to competitor creeping and dirt dives. The meeting space on the 3rd floor will be setup as a competitor lounge area. There will also be space for competitors to relax and view video in the class and team rooms. Bulletin boards will be setup on all three floors for easy access to all competitors.



The building is equipped with 7 public toilets including both men's and women's facilities. There is a drinking fountain and sink with faucet on the second floor and an additional sink with faucet in the third floor competitor lounge. There are also two food and beverage vending machines on the first floor.

iFLY Austin is directly next door to a restaurant and an ice creamery with additional facilities and food for purchase.

iFLY will rent off-site meeting space nearby to accommodate opening and closing ceremonies, banquets, and social gatherings.

2.14 Wind Tunnel (in Lieu of Aircraft)

iFLY Austin features a 14 foot (4.3 meter) diameter, 50 foot (15.24 meter) tall flight chamber with floor to ceiling glass for the first 14 vertical feet (4.27 meter) and is capable of speeds up to 160 mph (258 km/h). The airspeed will be set according to official competition rules.



A capacity of 30-45 performances per hour is estimated, if not more. A concrete number will be calculated once all details are published in the official rules. iFLY Austin has slotted enough days for competition to allow for the variance.

2.15 Pre Event Training

Pre event training will be \$750 per hour plus tax (\$811.88), which can be booked in 15-minute increments any time between registering and the start of competition. During official practice days, time may be purchased in as few as 1-minute increments at \$12.50 per minute plus tax (\$13.53) to more closely mirror competition.

2.16 Accommodation

Austin is a major city with many options for accommodations. Hotels within 7 km of iFLY Austin include:

Staybridge Suites - \$113 USD/night
13087 N U.S. Highway 183
Austin, TX 78750

Crestwood Suites - \$65 USD/night
12989 Research Boulevard,
Austin, TX 78750

Comfort Suites NW Lakeline - \$85 USD/night
13681 N U.S. Highway 183
Austin, TX 78750

Crossland Economy Studios - \$62 USD/night
12621 Hymeadow Rd.
Austin, TX 78729

Hampton Inn & Suites - \$84 USD/night
10811 Pecan Park Boulevard
Austin, TX 78750

Extended Stay America - \$85 USD/night
13858 N U.S. Hwy 183
Austin, TX 78750

Holiday Inn Express Hotel & Suites - \$114 USD/night
12703 FM 620 N
Austin, TX 78750

La Quinta Inn & Suites - \$115 USD/night
10701 Lakeline Mall Dr.
Austin, TX 78717

Home2 Suites by Hilton - \$110 USD/night
14022 Hwy 183
Austin, TX 78759

Hilton Garden Inn @ The Arboretum - \$101 USD/night
11617 Research Blvd.
Austin, TX 78759

2.17 Local Transportation Provided

iFLY Austin will provide rental cars for the judges and staff related to the event to share. Rental cars will be assigned two to three people per car.

Competitors are responsible for their own transportation to and from iFLY Austin and the ceremony and banquet locations. There are many rental companies that operate out of the three area airports and the surrounding Austin area including: Enterprise, Alamo, Avis, Dollar, Thrifty, Hertz, National, Budget. There are also taxi, shuttle, and limo services in Austin, Texas.

2.18 Outline of Media Plan

iFLY Austin is located in Austin, Texas which has many local, state, and national media outlets. Many of these media outlets are current contacts of iFLY Austin. iFLY Austin will send press releases and media invitations to its media contacts on a monthly basis for the six months preceding the event. Two months prior to the event iFLY Austin will increase the amount of press releases and photos sent out to its media contacts.

iFLY Austin will make available interviews, photos, and video footage to the media contacts and provide a media officer who will work with and give full cooperation to the IPC Media Liason Officer.

2.19 Accommodations for FAI/IPC Officials

Accommodations for the FAI/IPC officials will be provided at one of the many hotels near iFLY. iFLY Austin is currently accepting bids from numerous hotel and conference centers in the area (to house the ceremonies and staff) including: Hilton, Westin, and Aloft. Accommodations will all be in the same location and planned at double occupancy. Advance notice is requested for any accompanying persons and/or room requirements.

2.20 Judging Equipment

iFLY Austin will provide judging and scoring equipment that meets or exceeds the requirements set forth by the IPC. The flight chamber is equipped with both a top and side view camera from which footage can be used for video playback. Pending the requirements set forth by the upcoming rules, iFLY Austin will select an appropriate scoring system. OmniSkore and InTime are both being assessed as of the time of writing.

2.21 Public Address System

iFLY Austin has speakers hard-wired throughout the facility and will supplement with additional speakers so that the public announcements can be heard in all areas.

2.22 Arrangements for Medical Care

iFLY Austin will have a full time first aid and CPR trained person on site for the duration of the event. Full ambulance and medical services are available through 911 emergency services. Typical response time is just 4 minutes. There are several hospitals and medical centers in Austin including a level 1 trauma center.

2.23 Proposals for Event Officials

iFLY proposes Axel Zohmann as Event Director. Axel has competed in at least 11 World Cup and Championship events, giving him sufficient understanding of the format, expectations and rules of competition. He also has over 9 years experience with tunnel operations and management, which gives him invaluable understanding of operational necessities and how to integrate that knowledge in running a smooth event. Axel has also been integral in formulating the rules and dive pools for indoor skydiving competition and has been offering his expertise to the committee. Axel Zohmann's well-rounded background, professionalism and fairness all make him an ideal candidate for Event Director.

Assistant Chief Judge and Chief Judge to be determined.

iFLY Austin will cover travel, food and lodging costs for the following officials: FAI Controller, Chief Judge, and Assistant to the Chief Judge. Food and lodging costs will be covered for all other members of the Judges Panel.

2.24 Details of On-site Communications

iFLY Austin is equipped with multiple phone lines on each floor for inter-office and external calls. In addition, there are 4 handheld walkie-talkie radios and more can be obtained should it be necessary.

2.25 Federal, State, Local Legislation/Rules

There are no federal, state, or local legislation or rules that would interfere with the event. iFLY Austin requires the use of helmets by all competitors.

2.26 Visa Requirements

Visitors to the USA may be required to obtain a DS-160 visitors visa (B-2 Visa) to attend a sporting event such as this. Visitors can apply online to the US State Department using form DS-160 at http://www.travel.state.gov/visa/forms/forms_4230.html. The nonimmigrant visa application fee for the athlete category at the time of this printing is \$160 USD, and is not covered by the registration fees.

2.27 Medals

iFLY Austin will choose to get the awards medals from the FAI. In addition to the awards medals, iFLY Austin is seeking sponsorship to allow funding of cash prizes.

2.28 Anti-Doping Requirements

In the event that anti-doping testing becomes a requirement, iFLY Austin has the facilities necessary for testing and interviews. iFLY Austin also works with a local facility that performs drug testing.

2.29 Emergency Medical Services

FLY Austin will have a full time first aid and CPR trained person on site for the duration of the event. Full ambulance and medical services are available through 911 emergency services. Typical response time is just 4 minutes. There are more than 11 hospitals and medical centers in Austin including two Trauma centers: Brackenridge Hospital and St David's Medical Center are both just 14 miles (22 km) away.

2.30 Additional Information

2.30.1 FAI Judges Training Course

iFLY Austin does not intend to host an FAI Judges Training Course. However, if the IPC Judges' Committee would like for this course to take place, iFLY Austin can make arrangements to host the course given advanced notice so that a satisfactory registration fee can be agreed upon.

2.30.2 Competitor Registration

iFLY Austin will construct a web-based online registration system for teams and delegations to make it easy to complete forms, paperwork, registration and financial responsibilities.

2.30.3 Ceremonies and Awards

iFLY Austin will host an off-site Opening Ceremony the evening prior to the start of competition, which will also include a competitor briefing.

One Awards and Closing Ceremony, including a banquet dinner and entertainment, will be held after the completion of all events on November 16.

2.30.4 Social Events

In addition to hosting a banquet dinner at the Awards and Closing Ceremony, iFLY Austin will plan at least one other social evening.

2.30.5 Gifts

Each registered competitor, delegation member, and official will receive a selection of promotional items and gifts from sponsors and iFLY Austin.

Appendix A

Letters of Approval



October 31, 2013

Members of the International Parachuting Committee,

The City of Cedar Park supports the efforts of iFLY Austin Indoor Skydiving to bring the 2014 World Cup of Indoor Skydiving to the Greater Austin area. Cedar Park thanks the Committee for considering bringing this exciting event to our area.

You will find the Greater Austin area to be very supportive of these type events plus there are numerous activities and things for the participants as well as their families and friend to enjoy while in the area.

Thank you once again for your consideration and we hope to see some of the participants visit and potentially stay in Cedar Park.

Sincerely,

Phil Brewer

Director, Economic Development

AUSTIN

SPORTS COMMISSION

October 31, 2013

Members of the International Parachuting Committee:

On behalf of the Austin Sports Commission, I would like to offer our support in attracting the 2014 World Cup of Indoor Skydiving to Austin, Texas. We understand the prestige of this event and would be eager to add it to the growing list of alternative sports which have begun to sweep through Austin over the past few years. Having just been awarded the X-Games for the next four years we are confident that you will be able to recognize our continuing growth as an alternative sports city.

The Austin Sports Commission is charged with the responsibility, in accordance with our contract with the City of Austin, to market our wonderful city and recruit visitor-heavy, high-impact events to Austin. We believe that iFLY Austin's team will make an excellent host, and our office stands ready to assist with destination support to make this a reality.

We look forward to providing more information about our city, and the opportunity to showcase our city to your team. Please don't hesitate to contact me at any time and I hope we can help to bring this exciting event to Austin in 2014. Thank you for considering our city in your bid process.

Sincerely,

A handwritten signature in black ink, appearing to read 'Taylor Evans', with a stylized flourish at the end.

Taylor Evans
Account Director
Austin Sports Commission



CEDAR PARK CHAMBER OF COMMERCE

October 31, 2013

International Parachuting Committee

Dear Committee Members:

On behalf of iFly Austin I want to thank you and your organization for considering hosting the 2014 World Cup of Indoor Skydiving here.

iFly Austin is a state-of-the-art vertical wind tunnel and is Texas' first indoor skydiving facility. They will fly anybody from ages 3 to 103. This is truly a marvelous facility and we are proud to have them as members of the Cedar Park Chamber of Commerce.

With the great amenities in Cedar Park like our American Hockey League team the Texas Stars or our D League Basketball team the Austin Toros, we have many things for people to see and do. We are also minutes from Downtown Austin, the Live Music Capital of the World.

Thank you again for considering iFly Austin as your destination for the 2014 World Cup of Indoor Skydiving. Please do not hesitate to call me with any questions or concerns.

Sincerely,

Tony Moline, IOM, PCED
President and Chief Executive Officer

Appendix B

Landowner Approval



November 1, 2013

Members of the International Parachuting Committee:

We are very excited about the opportunity to host the 2014 World Cup of Indoor Skydiving at iFLY Austin in our shopping center called Austinville. As the owner we feel we will be able to offer our guests an unbelievable world-class experience. Besides iFLY, who's state of the art facilities are enjoyed world wide, we have a tenant mix that includes restaurants, a bakery, an ice cream store, and retail shopping. Austinville is a collection of the BEST local Austin businesses, where quality and customer service are our number one priority.

We fully support iFLY Austin in its effort to secure the 2014 World Cup of Indoor Skydiving and are available for any information or questions. Please contact me at steve@amysicecreams.com

**Thank you,
Steve**

A blue ink handwritten signature, appearing to be 'Steve', is written below the typed name.

2109 Northland Drive
Austin, Texas 78756
Phone: (512) 458-6149
Fax: (512) 458-4971
www.amysicecreams.com



Appendix C

Insurance Coverage



SKYGR-1

OP ID: N2

CERTIFICATE OF LIABILITY INSURANCE

DATE (MM/DD/YYYY)

03/19/13

THIS CERTIFICATE IS ISSUED AS A MATTER OF INFORMATION ONLY AND CONFERS NO RIGHTS UPON THE CERTIFICATE HOLDER. THIS CERTIFICATE DOES NOT AFFIRMATIVELY OR NEGATIVELY AMEND, EXTEND OR ALTER THE COVERAGE AFFORDED BY THE POLICIES BELOW. THIS CERTIFICATE OF INSURANCE DOES NOT CONSTITUTE A CONTRACT BETWEEN THE ISSUING INSURER(S), AUTHORIZED REPRESENTATIVE OR PRODUCER, AND THE CERTIFICATE HOLDER.

IMPORTANT: If the certificate holder is an ADDITIONAL INSURED, the policy(ies) must be endorsed. If SUBROGATION IS WAIVED, subject to the terms and conditions of the policy, certain policies may require an endorsement. A statement on this certificate does not confer rights to the certificate holder in lieu of such endorsement(s).

PRODUCER Watkins Insurance Group-Austin 3834 Spicewood Springs Rd, St Austin, TX 78759 Patrick L. Watkins, CIC, CRM		512-452-8877 512-452-0999	CONTACT NAME: PHONE (A/C, No, Ext): E-MAIL ADDRESS:	FAX (A/C, No):
INSURED SkyGroup Investments, LLC dba iFLY Austin LLC Scott Yeager 6034 W Courtyard Dr, Ste 135 Austin, TX 78730		INSURER(S) AFFORDING COVERAGE INSURER A : Axis Insurance Company INSURER B : Great American Insurance INSURER C : INSURER D : INSURER E : INSURER F :		

COVERAGES**CERTIFICATE NUMBER:****REVISION NUMBER:**

THIS IS TO CERTIFY THAT THE POLICIES OF INSURANCE LISTED BELOW HAVE BEEN ISSUED TO THE INSURED NAMED ABOVE FOR THE POLICY PERIOD INDICATED. NOTWITHSTANDING ANY REQUIREMENT, TERM OR CONDITION OF ANY CONTRACT OR OTHER DOCUMENT WITH RESPECT TO WHICH THIS CERTIFICATE MAY BE ISSUED OR MAY PERTAIN, THE INSURANCE AFFORDED BY THE POLICIES DESCRIBED HEREIN IS SUBJECT TO ALL THE TERMS, EXCLUSIONS AND CONDITIONS OF SUCH POLICIES. LIMITS SHOWN MAY HAVE BEEN REDUCED BY PAID CLAIMS.

INSR LTR	TYPE OF INSURANCE	ADDL INSR	SUBR WVD	POLICY NUMBER	POLICY EFF (MM/DD/YYYY)	POLICY EXP (MM/DD/YYYY)	LIMITS
A	GENERAL LIABILITY <input checked="" type="checkbox"/> COMMERCIAL GENERAL LIABILITY <input type="checkbox"/> CLAIMS-MADE <input checked="" type="checkbox"/> OCCUR GEN'L AGGREGATE LIMIT APPLIES PER: <input checked="" type="checkbox"/> POLICY <input type="checkbox"/> PRO-JECT <input type="checkbox"/> LOC	<input checked="" type="checkbox"/>		AXGL0110426012	12/14/12	12/14/13	EACH OCCURRENCE \$ 1,000,000
	DAMAGE TO RENTED PREMISES (Ea occurrence) \$ 100,000						
	MED EXP (Any one person) \$ excluded						
	PERSONAL & ADV INJURY \$ 1,000,000						
	GENERAL AGGREGATE \$ 2,000,000						PRODUCTS - COMP/OP AGG \$ 2,000,000
							Emp Benef \$ 1,000,000
A	AUTOMOBILE LIABILITY <input type="checkbox"/> ANY AUTO <input type="checkbox"/> ALL OWNED AUTOS <input checked="" type="checkbox"/> HIRED AUTOS <input checked="" type="checkbox"/> SCHEDULED AUTOS NON-OWNED AUTOS			AXAL0110124512	12/14/12	12/14/13	COMBINED SINGLE LIMIT (Ea accident) \$ 1,000,000
	BODILY INJURY (Per person) \$						
	BODILY INJURY (Per accident) \$						
	PROPERTY DAMAGE (Per accident) \$						
							\$
A	UMBRELLA LIAB <input checked="" type="checkbox"/> OCCUR EXCESS LIAB <input type="checkbox"/> CLAIMS-MADE DED <input checked="" type="checkbox"/> RETENTION \$ 0			AXXS0110214612	12/14/12	12/14/13	EACH OCCURRENCE \$ 4,000,000
	AGGREGATE \$ 4,000,000						
	\$						
	WORKERS COMPENSATION AND EMPLOYERS' LIABILITY ANY PROPRIETOR/PARTNER/EXECUTIVE OFFICER/MEMBER EXCLUDED? (Mandatory In NH) <input type="checkbox"/> Y/N If yes, describe under DESCRIPTION OF OPERATIONS below	N/A					<input type="checkbox"/> WC STATUTORY LIMITS <input type="checkbox"/> OTHER
	E.L. EACH ACCIDENT \$						
	E.L. DISEASE - EA EMPLOYEE \$						
	E.L. DISEASE - POLICY LIMIT \$						
B	Property			MAC033541100	12/14/12	12/14/13	Building 4,000,000 Wind Tunn 1,500,000

DESCRIPTION OF OPERATIONS / LOCATIONS / VEHICLES (Attach ACORD 101, Additional Remarks Schedule, if more space is required)

iFLY Franchising, LLC has been named as Additional Insured to the General Liability policy.

CERTIFICATE HOLDER**CANCELLATION**

iFLY Franchising, LLC
6034 W Courtyard Dr #135
Austin, TX 78730

SHOULD ANY OF THE ABOVE DESCRIBED POLICIES BE CANCELLED BEFORE THE EXPIRATION DATE THEREOF, NOTICE WILL BE DELIVERED IN ACCORDANCE WITH THE POLICY PROVISIONS.

AUTHORIZED REPRESENTATIVE

Patrick L. Watkins

© 1988-2010 ACORD CORPORATION. All rights reserved.

Appendix D

Proposed Budget

Income

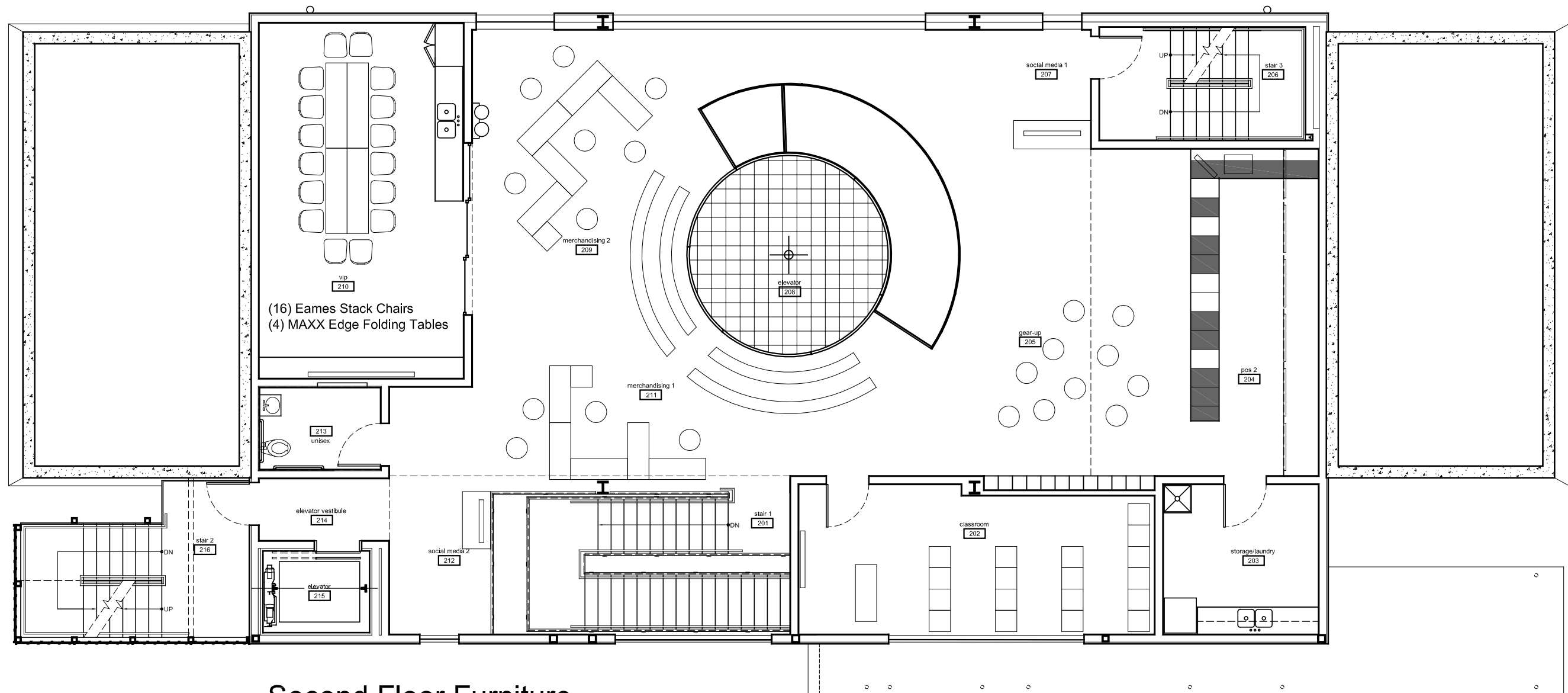
	Average Fee	Estimated Quantity	Total
Competitor Entry Fee (not including FAI sanction fee)	\$585	250	\$146,250
Non-Competitor Entry Fee (not including FAI sanction fee)	\$360	20	\$7,200
Total Income			\$153,450

Expenses

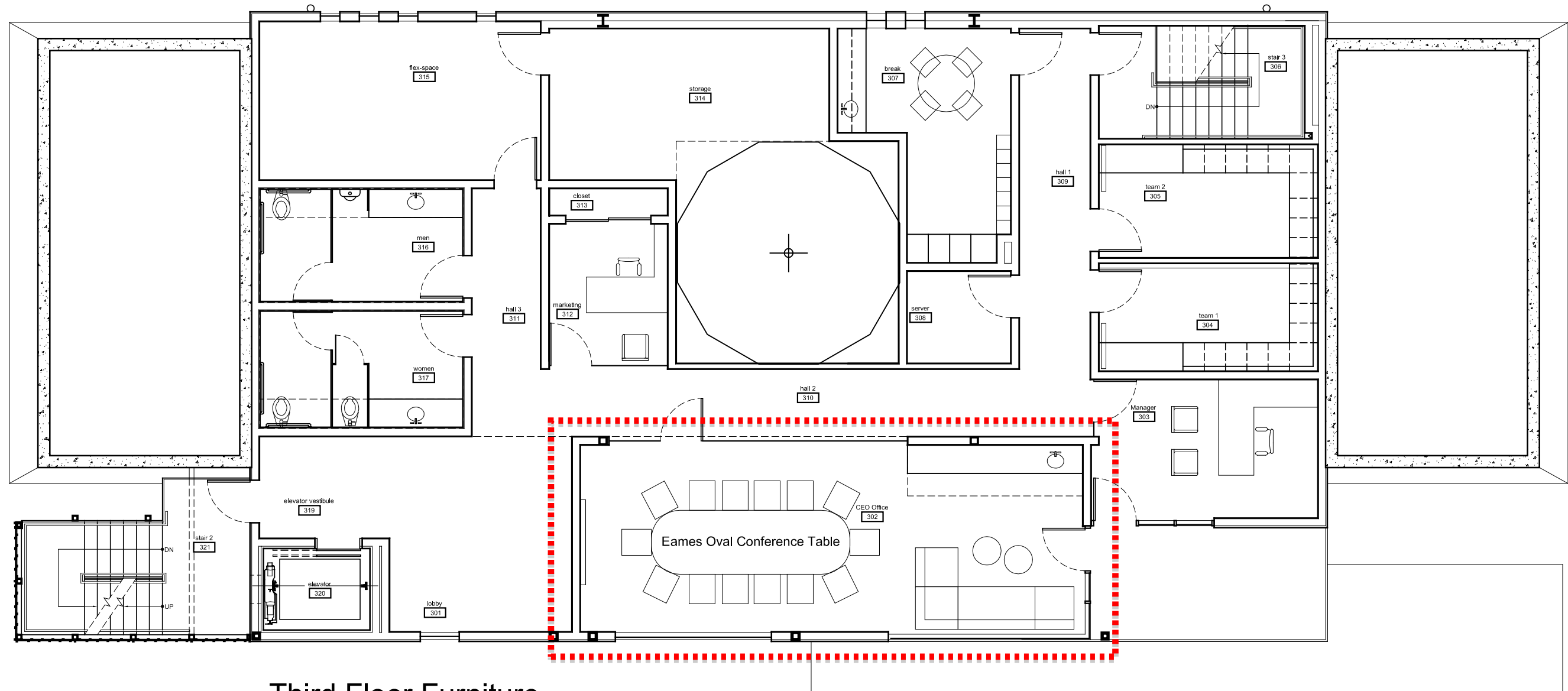
	Total
Officials and Judging Staff: Travel, Transportation, Meals, Hotel, Gift	\$24,800
Event Supplies: Seating, Scoring Systems, Extra Staff, Misc.	\$35,600
Competitor Expenses: Gift, Ceremonies, Banquet, Meals,	\$69,400
Flight Time	\$18,500
Total Expenses	\$148,300

Appendix E

iFLY Austin Floor Plans



Second Floor Furniture



Third Floor Furniture