

## Status Report

**30<sup>th</sup> FAI World Gliding  
Championships 2008  
OPEN, 18M, 15M Classes**

**Lüsse-Berlin**

IGC Meeting  
Rome, February 2008

Presentation by  
Herbert Maertin, CD  
Fred Gai, DCD



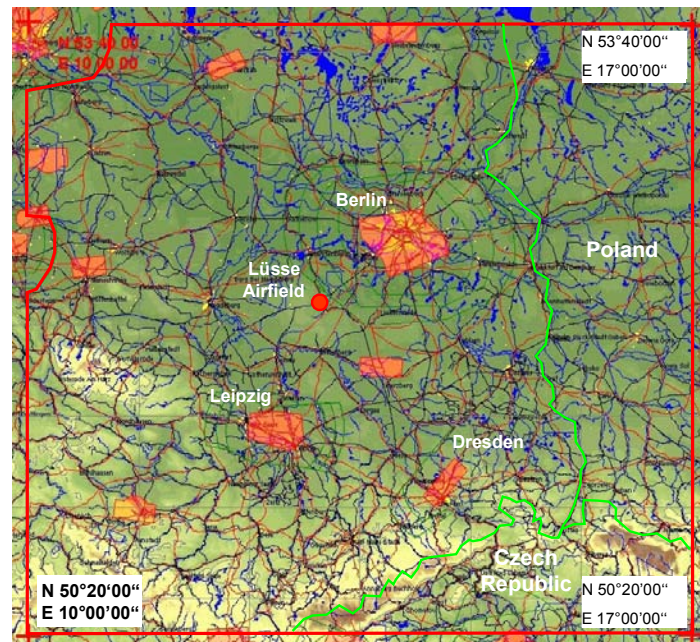
## Organisation

- Core team is established: all experts from Lilienthal Glide 2007, EGC 2000 and German Nationals 2005 are on board
- Time schedule for WGC 2008 is set: <http://www.wgc2008.org>
- Contest management:
 

Contest director	Herbert Maertin
Deputy director	Fred Gai
Task setter	Klaus Engelhardt
Scorer	Nicola Botta
PR	Annette Reichmann
- The Jury and Steward-Team is established
 

President of Jury:	Tor Johannessen
Chief Steward:	Dick Bradley
- Airspace: German air traffic control is involved into planning, Polish air traffic control approval has been requested
- The co-ordination of military restricted areas (ED-R) has started successfully

Competition Area





# WORLD GLIDING CHAMPIONSHIPS

LÜSSE BERLIN, GERMANY  
2.-16. AUGUST **2008**



## Preliminary Entries

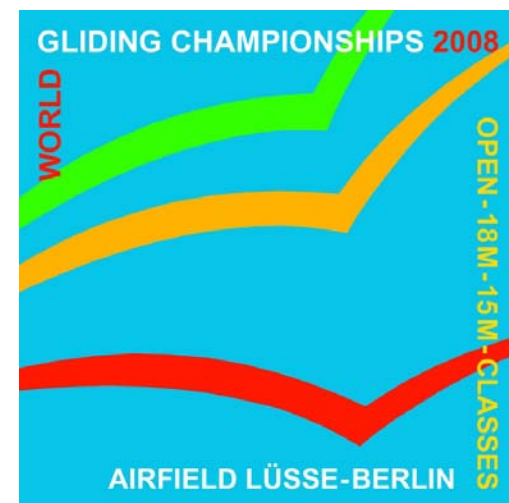
- We are very pleased with the huge level of interest in the WGC at Lüsse shown by number of preliminary entries (164 prelim. entries + 49 substitute entries)
- For safety reasons, the total number of pilots is restricted to a maximum of 130, and to a maximum of 50 per class
- If we receive the same number of Final Entries on March 31, 2008, we must reduce the number of pilots in co-ordination with the IGC Bureau and the Chief Steward pursuant to Sporting Code Annex A, Section 3.4.3 c
- This will work as follows:
  - First, entries will not be accepted if the entry fees have not been paid in full by March 31, 2008
  - Second, the allocation of starting rights for the 2nd pilot per NAC and class will be made according to the Country Ranking of the IGC Ranking list, valid on March 31, 2008

	Nation	Open	Substi- tute	18m	Substi- tute	15m	Substi- tute	Total
1	Argentina	1	0	2	1	2	0	5 (1)
2	Australia	2	1	2	1	2	1	6 (3)
3	Austria	2	0	2	0	2	1	6 (1)
4	Belgium	2	1	2	1	2	1	6 (3)
5	Brazil	2	0	2	0	2	0	6 (0)
6	Canada	0	0	1	0	2	0	3 (0)
7	Chile	0	0	0	0	1	0	1 (0)
8	Czech.Rep.	2	1	2	1	2	1	6 (3)
9	Denmark	2	1	2	1	2	1	6 (3)
10	Finland	2	0	2	0	2	0	6 (0)
11	France	2	1	2	1	2	1	6 (3)
12	Germany	3	1	2	1	3	1	8 (3)
13	Great Britain	2	1	3	1	2	1	7 (3)
14	Greece	0	0	1	0	0	0	1 (0)
15	Hungary	2	1	2	1	2	1	6 (3)
16	Ireland	0	0	2	0	2	0	4 (0)
17	Israel	1	0	2	0	2	0	5 (0)
18	Italy	2	0	2	1	2	0	6 (1)
19	Japan	0	0	2	0	1	0	3 (0)
20	Lithuania	2	1	2	1	2	1	6 (3)
21	Netherlands	2	1	2	1	2	1	6 (3)
22	New Zealand	1	0	0	0	2	1	3 (1)
23	Norway	1	0	2	0	0	0	3 (0)
24	Poland	2	1	2	1	3	0	7 (2)
25	Russian Federation	2	0	2	1	2	1	6 (2)
26	San Marino	0	0	1	0	0	0	1 (0)
27	Serbia	0	0	2	1	0	0	2 (1)
28	Slovak Rep.	0	0	2	1	2	1	4 (2)
29	Slovenia	2	0	0	0	0	0	2 (0)
30	South Africa	2	1	2	1	2	1	6 (3)
31	Spain	0	0	0	0	2	0	2 (0)
32	Sweden	0	0	2	0	2	0	4 (0)
33	Switzerland	2	0	2	1	2	1	6 (2)
34	Ukraine	1	0	0	0	2	0	3 (0)
35	USA	2	1	2	1	2	1	6 (3)
	<b>Total</b>	<b>46</b>	<b>13</b>	<b>58</b>	<b>19</b>	<b>59</b>	<b>17</b>	<b>164 (49)</b>



## Training facilities before the WGC 2008

- Practice flights before the WGC are possible at Lüsse airfield upon confirmation. Note that we can only accept a maximum of ca. 20 gliders (normally 2 nations teams) at the same time
- During the closure of Lüsse airfield (July 1 - 25, 2008) for preparation of the airfield, 7 airfields in the competition area can be used for practice flights (information at: [www.wgc2008.org/Download](http://www.wgc2008.org/Download))
- **Training week Lüsse airfield**
  - July 26 - July 28, 2008 Unofficial Training (Sat - Mon)
  - July 29 - August 1, 2008 Official Training (Tue - Fri)



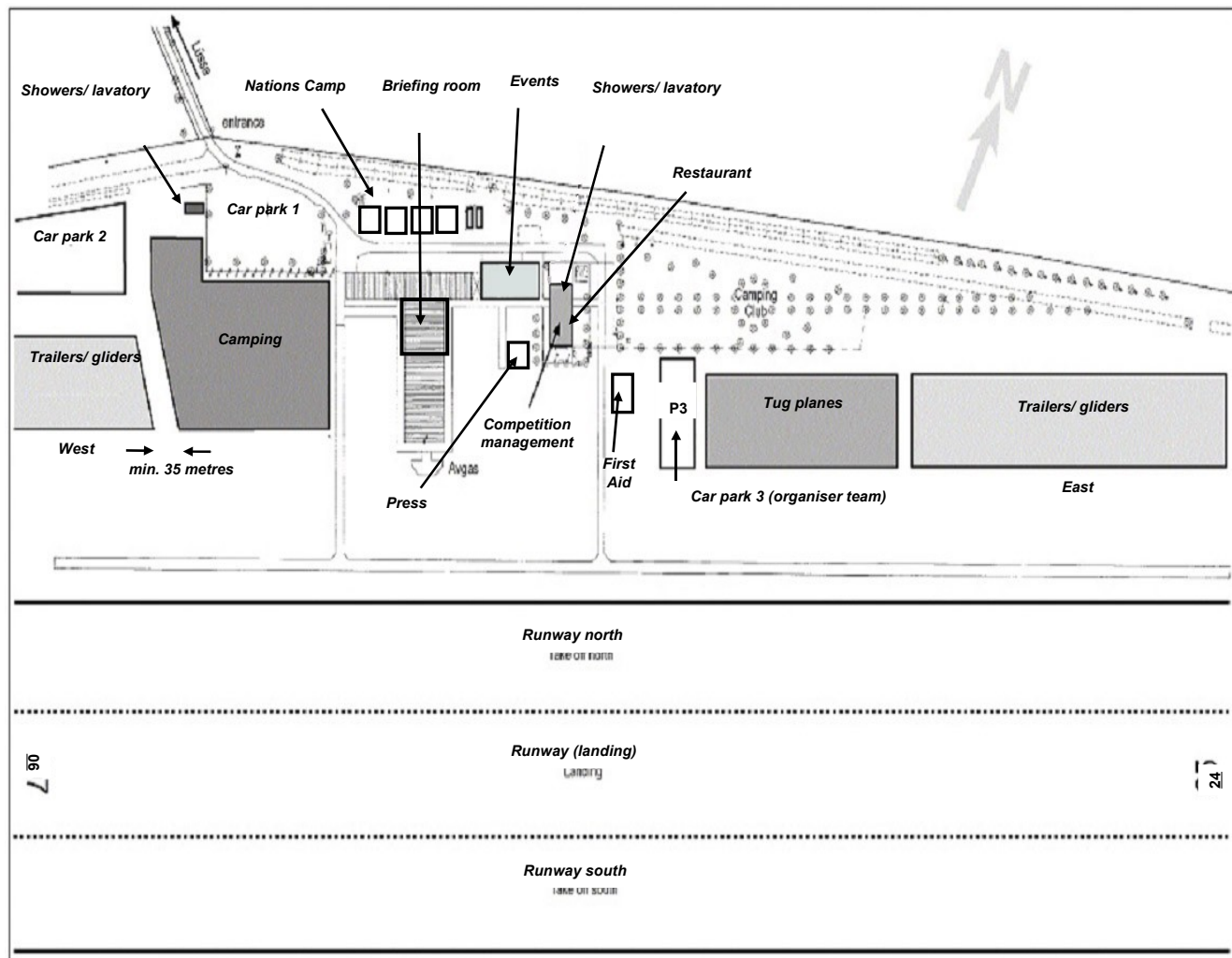
## Infrastructure

- Lüsse airfield's infrastructure for pilots, guests and flight operations is specifically designed for competitions
- The catering facilities have been upgraded to a semi-professional standard for the WGC 2008
- Nations' camp containers with technical equipment as described in Bulletin No. 1 will be available for the teams who have ordered a container
- We currently review all procedures in view of the high demand



## Airfield and Operations

- All operational areas are assigned and prepared
- We hope to get the wireless Internet access upgraded
- Directions and maps will be included in the self-briefing





## Financing - Media and Sponsoring

- Public funding is unfortunately not available in Germany
- FCC Berlin aims at private sponsoring to cover the costs
- Lufthansa AG is the main sponsor of the WGC 2008 at Lüsse
- Internet presence is established: [www.wgc2008.org](http://www.wgc2008.org) (.com, .de, .info)
- Current sponsors:

Main sponsor:

Deutsche Lufthansa AG



Sponsors:

Arcor Communications

PROKON Nord Energiesysteme GmbH

EADS Deutschland GmbH

a.o.

Year	Date	Activity
2007	November	Bulletin No. 1
2008	January 15	Preliminary Entry due
2008	January 31	Bulletin No. 2
2008	March 31	Final Entry forms and Entry Fee due
2008	May	Bulletin No. 3 (Local Procedures)
2008	June 01	Deadline for class change
2008	June 01	Deadline for approval of new GNSS PNs 2008
2008	July 01 - July 28	Airfield closed for training flights
2008	July 26 - July 28	Unofficial Training (Sat - Mon)
2008	July 29 - August 01	Official Training (Tue - Fri)
2008	July 27 - August 01	Registration



**We are proud and happy to host the 30<sup>th</sup> FAI World Gliding Championships 2008 in the Open, 18M, 15M Classes**

