

MEASUREMENT CCC CERTIFICATION
Recognition EN 926-2 | 2005

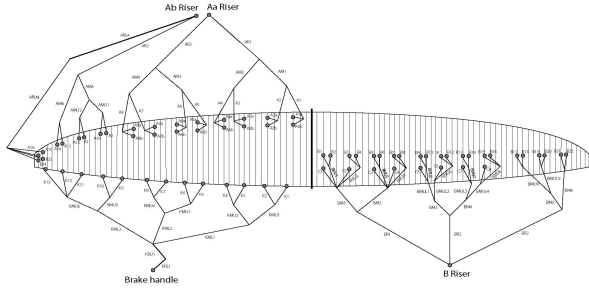
2015 Edition | Revision 3.5 | SEPT 2014

CCC-010

Brand	Osprey Gliders	Model	Enzo 2	Size	B	PR3-P-120-024	DATE	04.12.2014
Certification n°	PG_0853.2014	Certification date	06.05.14					

Responsible: Gilles Bernoux

Enzo 2 Rigging diagram



MEASURE THE LENGTH FROM JOINTS FROM THE CENTER OF THE PARACHUTE

	Manual			Glider			Manual			Glider		
	A	A'	Diff	A	A'	Diff	B	B'	Diff	B	B'	Diff
1	8032	8033	-1	8018	8017	1	8055	8060	-5	8137	8137	0
2	7922	7922	0	7907	7906	1	8002	8006	-4	7987	7988	-1
3	7896	7897	-1	7881	7883	-2	7901	7907	-6	7948	7949	-1
4	7959	7957	2	7946	7945	1	7894	7897	-3	7959	7961	-2
5	7827	7823	4	7815	7813	2	7869	7870	-1	7921	7915	6
6	7687	7686	1	7676	7676	0	7858	7861	-3	7752	7748	4
7	7623	7624	-1	7613	7614	-1	7900	7901	-1	7885	7876	9
8	7655	7654	1	7648	7646	2	7918	7918	0	7871	7861	10
9	7415	7409	6				7852	7849	3			
10	7375	7371	4				7830	7799	1			
11	7287	7281	6				7657	7666	1			
12	7287	7282	5				7680	7678	2			
13	7233	7229	4				7625	7618	7			
14	7241	7237	4				7609	7603	6			
15	7113	7114	-1				7628	7623	5			
16	7093	7091	2				7646	7639	7			
							7409	7399	10			
							7373	7366	7			
							7292	7285	7			
							7298	7289	7			
							7241	7236	5			
							7253	7246	7			
							7102	7100	2			
							7106	7105	1			

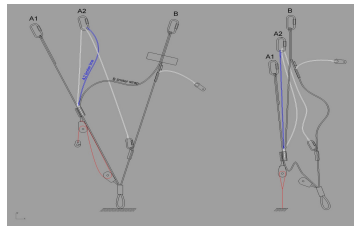
	Manual			Glider			Manual			Glider		
	B'	Stabilo	Diff	Stabilo	Diff	Diff	tot brake line	Diff				
	8137	8137	0			0	8386	8388	0			
	7987	7988	-1			0	8130	8130	0			
	7948	7949	-1			0	7939	7935	4			
	7959	7961	-2			0	7872	7871	1			
	7921	7915	6				7709	7710	-1			
	7752	7748	4				7544	7548	-4			
	7691	7690	1				7459	7460	-1			
	7621	7621	0				7406	7408	-2			
	7447	7447	0				7417	7417	0			
	7879	7878	1				7559	7555	3			

Riser length Manual

	A	A'	B	B'	calculated Δt	Tension	Tolerances	Attachment rod diameter in mm
Neutral	529	521	515		14	5KG	±5mm	5
Full speed setting								
A,A'	61	±5mm						
B,A'	103	±5mm						
Full speed setting								
A,A'	62	±5mm						
B,A'	103	±5mm						
Total speed Range (Δa+Δb)								117 ±5mm

Riser length Gliders

	A	A'	B	calculated Δt	Tension	Tolerances	Attachment rod diameter in mm	
Neutral	534	529	521		13	5KG	±5mm	6
Full speed setting								
A,A'	58	±5mm						
A,B	108	±5mm						
Full speed setting								
A,B	68	±5mm						
Total speed Range (Δa+Δb)								119 ±5mm



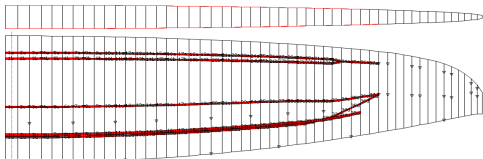
MEASUREMENT CCC CERTIFICATION
Recognition EN 926-2 | 2005

2015 Edition | Revision 3.5 | SEPT 2014

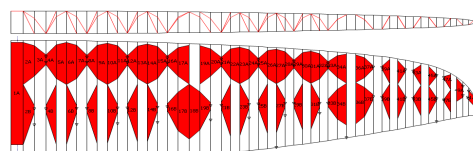
CCCC-010

Brand	Ozone Gliders	Model	Enzo 2	Size	S	PR3-P-120-024	Responsible	Gilles Berteux
Certification n°	PG_0853.2014	Certification date	06.05.14				DATE	04.12.2014

Drawings
Tension bands



Diagonals and internal structure



Inlet shape



Mini rib position

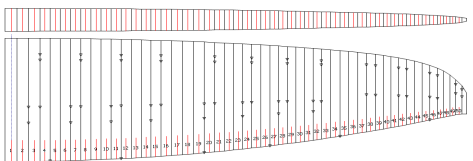


Table of lines quality

Suspension line details
Enzo 2 CCC lines
22th september 2014

Line and slice details	9000-030	Splice Type	Loop Length	non sewed Len	Sewed Length	not non Sewed Len	Total splice length (Including Loop)
Edelrid - Rec	bbPPP B		20	15	15	30	80 mm
No Reinforcement in loop							+ Diagonal cut

Lines concern special comment

- A13
- A14
- B21
- B22
- B46
- B7
- B18
- B15
- B10
- B16
- B19
- B20
- B13
- B6
- B12
- B2
- B11
- B3
- C8
- BMU10
- C7
- C4
- C5
- C2
- C3
- C4
- C1

Line and slice details	A-9000-030	Splice Type	Loop Length	non sewed Len	Sewed Length	not non Sewed Len	Total splice length (Including Loop)
Edelrid - Ora	bbPPP A		20	25	15	50	110 mm
No Reinforcement inside loop							+ Diagonal cut

Lines concern special comment

- A16
- B23
- B24
- A15
- K6
- K7
- K2
- K10
- K8
- K9
- K4
- K11
- K5
- K3
- K1
- K12
- K15

Line and slice details	A-9000-030	Splice Type	Loop Length	non sewed Len	Sewed Length	not non Sewed Len	Total splice length (Including Loop)
Edelrid - Ora	bbPPP A		20	25	15	50	110 mm
Reinforced with A-9000-030 inside the loop							+ Diagonal cut

Lines concern special comment

- KMU6
- KMU5
- KMU2
- KMU4
- KMU3
- KMU1

MEASUREMENT CCC CERTIFICATION
Recognition EN 926-2 | 2005

2015 Edition | Revision 3.5 | SEPT 2014

CCC-010

Brand	Ozone Gliders	Model	Enzo 2	Size	S	PR3-P-120-024	Responsible	Gilles Berrux
Certification n°	PG_0853.2014	Certification date	06.05.14	DATE	04.12.2014			

Line and slice detail	Splice Type	Loop Length	non sewed Lo	Sewed Length	not non Sewed Len	Total splice length (Including Loop)
Edelrid - Red	bbHP B	20	15	15	30	80 mm
Reinforced with 8000-50 inside the loop + Diagonal cut						

Lines concerned comment

A10

A11, A12

A9

AMU2

AM6

KML2

KML3

KML1

ARU4

B8

B16

B17

B5

B9

B4

B1

BMU1L, BMU1, BMU3

BMU8

BMU4, BMU7

BMU6

BMU5

BMU9

BM5

BMU2

BMU3

BMU1

BMU4

BR3

red sleeve on riser loop + loop on maillon

Line and slice detail	Splice Type	Loop Length	non sewed Lo	Sewed Length	not non Sewed Len	Total splice length (Including Loop)
Edelrid - Red	bbHP B	20	15	15	30	80 mm
Reinforced with 8000-50 inside the loop + Diagonal cut						

Lines concerned comment

A6b

A7b

A8b

A8b, A8a

A7a

AMU1

A7

A8

BM4

Line and slice detail	Splice Type	Loop Length	non sewed Lo	Sewed Length	not non Sewed Len	Total splice length (Including Loop)
Edelrid - Red	bbHP B	20	15	15	30	80 mm
Reinforced with 8000-70 inside the loop + Diagonal cut						

Lines concerned comment

A3b

A5b, A3b

A1b

A2b

A5a

A3a

A1a

A6

A5

KRU

BM3

BM2

BM1

A4b

A4a

Line and slice detail	Splice Type	Loop Length	non sewed Lo	Sewed Length	not non Sewed Len	Total splice length (Including Loop)
Edelrid - Red	bbHP A	20	15	15	50	110 mm
Reinforced with 8000-50 inside the loop + Diagonal cut						

Lines concerned comment

AM4

AM5

A3

A2

A4

A1

BR2

red sleeve on riser loop + loop on maillon

Line and slice detail	Splice Type	Loop Length	non sewed Lo	Sewed Length	not non Sewed Len	Total splice length (Including Loop)
Edelrid - Red	bbHP A	20	15	15	50	110 mm
Reinforced with 8000-130 inside the loop + Diagonal cut						

Lines concerned comment

AM3

AM2, AM1

AR3 red sleeve on riser loop

BR1 red sleeve on riser loop + loop on maillon

Line and slice detail	Splice Type	Loop Length	non sewed Lo	Sewed Length	not non Sewed Len	Total splice length (Including Loop)
Edelrid - Red	bbHP A	20	15	15	50	110 mm
Reinforced with 8000-230 inside the loop + Diagonal cut						

Lines concerned comment

AR1

red sleeve on riser loop

AR2 red sleeve on riser loop

Line and slice detail	DSL 140 - LPI _{50mm}
-----------------------	-------------------------------

Lines concerned on glider:

AR4

Line and slice detail	DSL 140 - LPI _{50mm}
-----------------------	-------------------------------

Lines concerned on glider:

KRL