

FEDERATION AERONAUTIQUE INTERNATIONALE
INTERNATIONAL PARACHUTING COMMISSION



BULLETIN 1

23rd FAI World Formation Skydiving Championships
12th FAI World Artistic Events Championships
18th FAI World Canopy Formation Championships
2nd FAI World Speed Skydiving Championships



1. Event Organisers

1.1 NAC

Air Sport Australia Confederation.
PO Box 337
Erindale Centre ACT 2903
AUSTRALIA

Telephone: +61 (0) 2 6162 1365
Fax: +61 (0) 2 6162 1366
Email: office@asac.asn.au
Contact: Raymond Pearson
(Executive Officer)

1.2 National Federation

Australian Parachute Federation.
Unit 3, Portal Office West,
2994 Logan Road,
UNDERWOOD QLD 4119
AUSTRALIA

Telephone: +61 (0) 7 3457 0100
Fax: +61 (0) 7 3457 0150
Email: apf@apf.com.au
Contact: Rob Libeau
(National Development Manager)

1.3 IPC Delegate

Ms. Gail Bradley

Telephone: : +61 (0) 413 119 575
Email: gail.bradley@apf.com.au

1.4 Organising Committee

Head of OC: **Bradley Turner**

CEO – APF

Members: **Gail Bradley**
Michael Dyer
Mark Edwards
Rob Libeau
Graeme Windsor OAM

IPC Delegate, National Judging Officer
Chair of OC, APF Board Director
National Aviation Officer
APF National Development, Marketing & PR
IPC President of Honour.



2. Aims of the FCE

- To determine the World Champions.
- To promote and develop Parachuting training and competition.
- To establish new World and Continental competition records.
- To exchange ideas and strengthen friendly relations between sport parachutists, judges and support personnel of all nations.
- To allow participants to share and exchange experience, knowledge and information.
- To improve judging methods and practices.

3. Date and place of the FCE

3.1 Event Dates

Date	Time	Activity
Thu 4 Oct	TBA	Arrival of FAI Controller, Meet Director, Chief Judges, CJTs, SP TD, and selected EJs for CF & FS as advised by CJ
	0600	Site open for Training Jumps, gear checks
Fri 5 Oct	TBA	Arrival of Jury, EJs, Judges
	0600	Site open for Training Jumps, gear checks, Manifest
Sat 6 Oct	0600	Official Arrival Day, Official Practice Day Arrival of Trainee Judges
	TBA	Judges' Conferences: AE, CF, FS, SP
	1530	Opening Ceremony
	1800	Draws: CF & FS
Sun 7 Oct	Daylight hours	Competition Commences CF, FS, SP - Sunrise to Sunset ~0503 – ~1753 (last takeoff 20 mins before sunset) AE Judges Conference continues AE Training Jumps continue
Sun 7 Oct	1800	Jump Order Draw: AE
Mon 8 Oct	Daylight hours	AE Competition Commences CF, FS, SP Competitions continue
Sat 13 Oct	1400	Competition Concludes
	TBA	Competitors' meetings
	1830	Awards Ceremony
	2000	Banquet & Closing Party
Sun 14 Oct		Official Departure Day

3.2 Location of Event

Runaway Bay Sports Super Centre
1 Sports Drive, Runaway Bay, Queensland 4216 AUSTRALIA

Latitude: 27°54' 32" S, Longitude: 153° 23' 34" E, estimated at 6 meters ASL

Airports: International = Brisbane (BNE) or limited entry = Gold Coast @ Coolangatta (OOL)

3.3 Map of Location - links

<https://www.google.com.au/maps/@-27.746376,153.0825239,10z>

<https://www.google.com.au/maps/@-27.9178006,153.3655193,12.92z>

4. Transportation

- Arrival Transfers are free to Full Package entrants and officials, to DZ or official hotels only, from Brisbane Airport (BNE) on 4, 5 and 6 October. Scheduled departure times are 0830, 1230 and 2030 on 4 and 5 October; only 0830 and 1230 on 6 October.
- Arrival Transfers are free to Full Package entrants from Coolangatta International Airport (OOL) on 4, 5 and 6 October to DZ or official hotels. Schedules to be determined when travel known.
- Departure Transfers are free to Full Package entrants. Schedules to be determined when travel details are advised.
- Basic Package entrants to provide their own transport or via pre-arranged (with APF) transfers for a fee of \$AU35 per trip per person.
- Arrival / Departure details must be included on Registration to enable scheduling of transport.
- Daily transfers to and from hotels to competition venue provided to Full Package entrants and Officials only.
- Morning shuttle transport from hotels is scheduled from 0500 to 0700 by bus. Return schedules will run from 1730hrs to 1900 on all competition days. Mini-buses will be made available to earlier competition starters, e.g.: CF.

Entrants wishing to organise their own transport may contact:

Hertz: www.hertz.com.au/rentacar/reservation

Budget: <https://www.budget.com.au/en/home>

Europcar: www.europcar.com.au

Eastcoast: www.eastcoastcarrentals.com.au

Avis: www.avis.com.au

5. How to get to the Venue

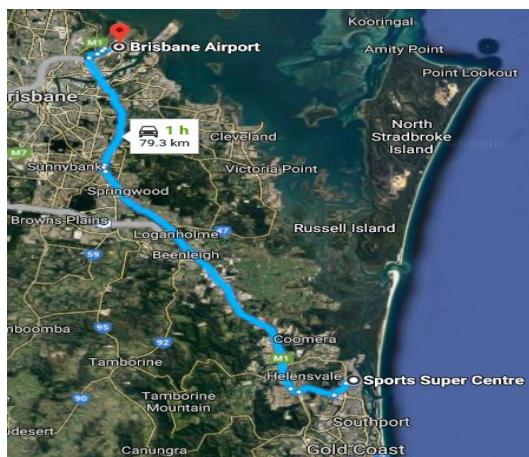
From Brisbane: Brisbane International Airport (BNE) is the primary international point of entry to Queensland and is located approx. 80km from the Sports Super Centre.

Full Package entrants are eligible for free transportation from BNE or OOL (see above).

Options for arranging transport from Brisbane International Airport include:

- Air Train to the Gold Coast then local transport. Approx. travel time two hours.
- Private shuttle services are available from Mid City Transport and Con-X-ion but should be pre-purchased prior to arrival.
- A full range of rental cars is available at the BNE airport (see above).

Arriving at Brisbane International Airport and driving south to the venue may take 1 to 1.5 hours by car depending upon traffic. (Speed Limit 100 kph max. Left-hand side driving, right hand side steering wheel.)

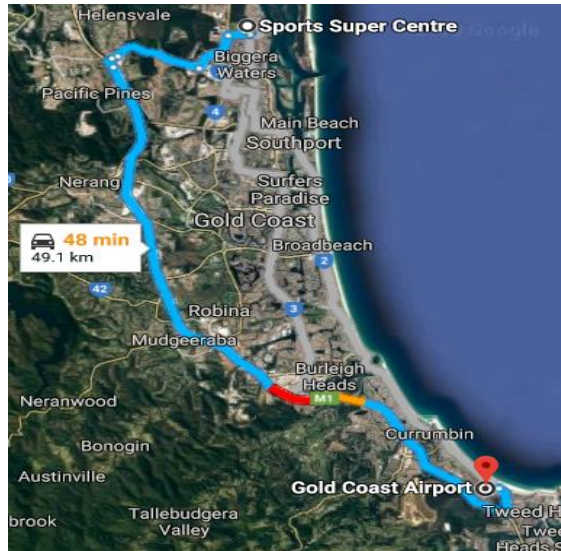


From Coolangatta: Coolangatta International Airport (OOL) is a limited point of entry airport located approx. 50km south of the Sports Super Centre.

Options if arranging your own transport from Coolangatta International Airport include:

- Trains (Light and Heavy), available. Time tables can be consulted closer to the event as times will vary dependent on future requirements of the city.
- The Skybus Shuttle services all flights with a service to Runaway Bay.
- Private shuttle services are available from Con-X-ion but should be pre-purchased prior to arrival.

A full range of rental cars is available at the airport (see above). Arriving at Coolangatta International Airport and driving north to the venue is ~45 minutes by car.



Transport contact details:

Air Train from Brisbane airport website : www.airtrain.com.au

Private shuttle services :

- Con-X-ion Airport Transfers : www.con-x-ion.com
- Mid City Transport : www.midcityairporttransfer.com.au

Comparison websites for taxis are the best source of information as they list all taxi companies.

- www.tripadvisor.com.au
- www.Vroomvroomvroom.com.au
- www.Carrental.com.au

6. Registration & Entry Fees

6.1 Two Entry Package types are available, *Full* and *Basic*.

- The all-inclusive entry fee is the *Full Package*.
- The *Basic Package* gives entrants a lower-cost entry fee allowing them to source their own accommodation, food and transport. These are also provided as individual options by the Organiser, and may be added to the Basic Package during Registration.
- Accompanying Persons may be Full or Basic with options.

The following entry fees describe Early Bird rates. To secure these rates, registration and payment must be received before 6 August 2018, (midnight AEST*), i.e.: 61+ days prior to 6 October 2018. Room allocation at the five-star Intercontinental Hotel is not guaranteed but will be made on a first come-first served basis so earlier registration is recommended.

* Australian Eastern Standard Time (UTC +10 hours).

Full Package entry fee includes:

- Competition fees, Competition Jumps, Re Jumps, Jump Offs, one training jump
- Breakfast, Lunch and dinner x eight days/nights (including Gala Banquet), Judging, APF Short Term Membership.
- Accommodation at either the Intercontinental, the Ramada Hope Island, (or alternative 3+* hotels if these become fully allocated), x eight nights - check in 6 October/check out 14 October (Twin Share).
- Transfers from Brisbane/Coolangatta – return. Transport from hotel to DZ and return during competition.
- Opening and Closing Ceremonies, Awards, Medals, Gala Banquet, gift bag and event T-Shirt.

PRICING SCHEDULE – FULL PACKAGE

EARLY BIRD RATES – paid 61+ days before 6 Oct 2018	Full Package in AU\$	
Formation Skydiving, 4-Way or 8-Way	\$1,590	Plus 90€ FAI Sanction Fee
Vertical Formation Skydiving, 4-Way	\$1,600	
Artistic Events	\$1,300	
Canopy Formation	\$1,300	
Speed Skydiving	\$1,300	
Officials, Heads of Delegations, Alternates	\$1,030	
Second event (Single jump price @ AU\$45.00)	\$150 plus jumps	
Accompanying Person	\$1,030	
Single Jump Price for additional Jumps from 4 Oct (pre-purchased or bought at Manifest)	\$45	

Basic Package (DIY) entry fee includes:

- Competition fees, Competition Jumps, Re Jumps, Jump Offs, one training jump
- Lunch x seven (7-13 Oct) days, Judging, APF Short Term Membership
- Opening and Closing Ceremonies, Awards, Medals, Gala Banquet, gift bag and event T-Shirt.

PRICING SCHEDULE – BASIC PACKAGE (DIY)

EARLY BIRD RATES – paid 61+ days before 6 Oct 2018	Basic Package in AU\$	
Formation Skydiving, 4-Way or 8-Way	\$1030	Plus 90€ FAI Sanction Fee
Vertical Formation Skydiving, 4-Way	\$1040	
Artistic Events	\$740	
Canopy Formation	\$740	
Speed Skydiving	\$740	
Officials, Heads of Delegations, Alternates, other	\$470	
Second event	\$150 plus jumps	
Single Jump Price for additional Jumps from 4 Oct (pre-purchased or bought at Manifest)	\$45	
<i>Add:</i> Competitor/Official Accommodation Package in Lodges (total price for eight nights, 6-13 Oct inclusive) This is on-site Dormitory Lodge accommodation which may include up to Quad Share.	\$100	

PRICING SCHEDULE – EARLY BIRD BASIC PACKAGE (cont)	Basic Package in AU\$	
Add: Competitor/Official Meals Package Upgrade (includes breakfast and dinner, seven days (7-13 Oct))	\$250	
Transfers to/from BNE & OOL. Price per person per trip	\$35	

ACCOMPANYING PERSON BASIC PACKAGE:	\$0	
Add: Accompanying Person Meal Package: Breakfast, Lunch and Dinner x seven days	\$355	
Add: Accompanying Person Lodge Package (total price for eight nights, 6-13 Oct inclusive): This is on-site Dormitory Lodge accommodation which may include up to Quad Share.	\$260	
Add: Accompanying Person Banquet Ticket	\$110	
Add: Transfers to/from BNE & OOL. Price per person per trip	\$35	

6.2 Final Registration Dates

Final registration and payment is required by **midnight AEST 6 August 2018** to secure Early Bird rates. Once the Intercontinental Hotel is fully allocated, allocation of rooms will continue at the Ramada and other 3+* alternatives, and at onsite Lodges.

After midnight AEST 6 August 2018, Standard Entry Fees (+AU\$100 pp) will apply until midnight AEST 5 September.

After midnight AEST 5 September to midnight AEST 5 October, Late Entry Fees will apply (+AU\$150 pp) and there is no guarantee of entry to the competition or to any event facilities or offerings including accommodation.

Standard and Late Payment Dates and Rates:

STANDARD RATES - paid 31-60 days before 6 Oct 2018 (i.e.: after midnight 6th August to before midnight 5th September 2018 AEST)
Add AU\$100 per person to every price in Early Bird.
LATE ENTRY FEES – paid 0-30 days before 6 Oct 2018 (i.e.: after midnight 5th September before midnight 5th October 2018 AEST)
Add AU\$150 per person to every price in Early Bird.

6.3 Number of teams allowed and FAI Sporting Licences

As specified in Sporting Code Section 5 and relevant Competition Rules.

A valid FAI Sporting Licence for 2018 is required and must be obtained through the Competitor's NAC. All competitors must be registered by their NAC in the FAI Sporting Licence Database.

6.4 Registration Procedure

Registration is online at www.apf.com.au/get-into-skydiving/wpc/2018-world-parachuting-championships.

Each NAC shall designate one contact person and address and make one registration and payment. No separate registrations or payments by individuals or teams shall be accepted.

6.5 Payment procedure

Payment may only be made by direct deposit to:

Beneficiary/Account Name: Australian Parachute Federation Ltd
Beneficiary Address: Unit 3 Portal Office West
2994 Logan Road
Underwood
QLD 4119
AUSTRALIA
BIC/SWIFT Code: NATAAU33
BSB and account #: 082968 805270681
Reference: Country Name of the Delegation.

7. Drop Zone

The venue is the Queensland Government's Sports Education Centre which will be hosting a number of Commonwealth Games events prior to the WPC. The venue is a purpose-built sports stadium that provides modern facilities for competitors, judges and officials. The rooms provided for judging, competitor meetings, media and other required officials are fully air conditioned and have fresh water and coffee making facilities. There will be unlimited photocopying and computer access for official competition requirements. Professional rigging services will be available. The site will incorporate a sophisticated audio-visual setup to enhance the experience of competitors, officials and spectators. A variety of screens and audio announcement equipment will be available across the site to display highlights, replays, scoring and other operational information.

The canopy landing area is a flat grassy field 400m x 200m with a North orientation. Alternate landing areas (outs) are located to the East and West of the main landing area. The round cricket field immediately adjacent to the main landing area is a no-landing zone.

There are landing hazards to the North with thick bushland, and to the South with residential housing located on a waterway. There are football posts on the Western alternate landing area. The Runaway Bay area has underground electricity lines.

Our team of dedicated site volunteers will be available to orientate people to the site and assist attendees with any special requirements for the duration of the event.

The Airfield is 4.2km by road from the landing area and will take approximately seven minutes to transfer competitors from the manifest holding area to the emplaning area by shuttle bus. There will be shade at both ends of the short journey.

The athlete's hub will be located within a contained and secure sporting field. The hub will have direct access to support services such as manifest, creeper area, rigging loft, and judging rooms. The main venue building adjacent to the athlete's hub has male/female toilets, male/female showers, all day food, mess hall for breakfast, lunch and dinner, indoor/outdoor creeper area, large and small screen TVs, PA system, scoreboards, swimming pool, medical suites and gymnasium. There is suitable internet and WIFI available for use by athletes. There will also be a licensed bar for spectators and supporters at the Eastern end of the athletes' hub.

Venue Facilities

- **First Aid & Medical Services** – The Sports Centre provides a sports medicine service including first aid, physiotherapy and exercise physiology. In the event of an emergency the Gold Coast Hospital is 6.9 ks away (9 minutes by ambulance) and there is an air ambulance service with Medi-Vac helicopter on permanent standby adjacent to the Sports Centre. Medical services are also available a few minutes away at the local shopping centre.

- **Health & Wellbeing** – The Sports Centre offers a range of health services and facilities including a swimming pool, fully equipped gym, beach volleyball and basketball area. There will be masseurs on site.
- Free WIFI is available across the Sports Centre site for athletes.
- The central stadium will host marquees for each represented country
- Air-conditioned judging room
- Fully equipped rigging loft
- Manifest
- Sun Path Products VIP Area
- Media Room
- Photocopying/computer access.

Venue Map

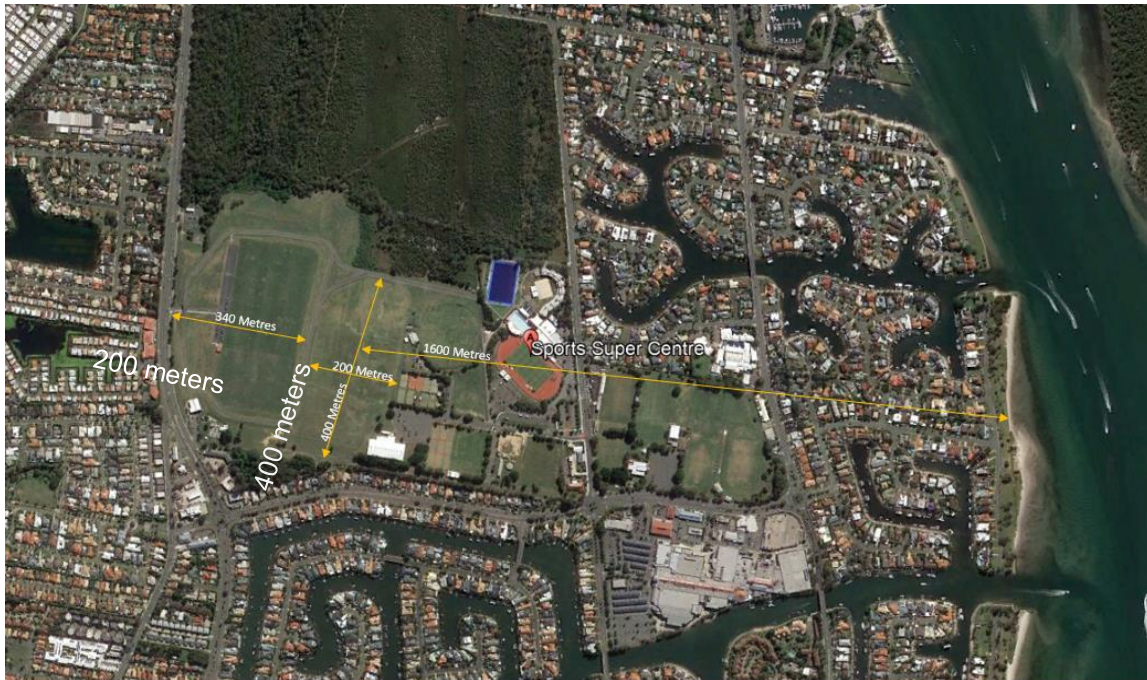
A) Venue Layout



B) Route from Competition Site to Airport



C) Relevant measurements



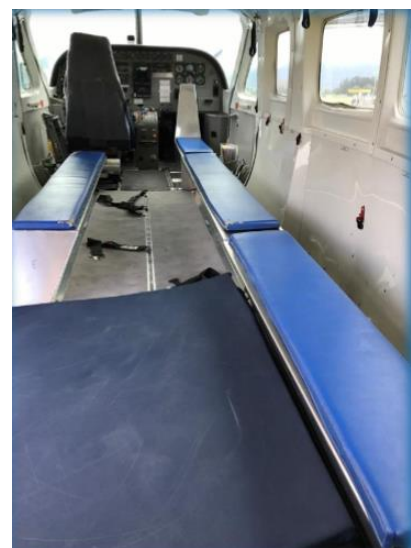
8. Aircraft

The fleet of Cessna 208 Caravans is configured identically. Each aircraft is fitted with dual parachutists' straddle benches to comfortably seat 17 parachutists, GO25 Single Point Restraints, internal and external floater handles and a rear camera step located to the rear of the inflight operational parachute door.

There is a three light pilot activated lighting system visible to all rearward-facing parachutists on the aircraft's rear cabin bulkhead which also encompasses the In-flight Emergency Plan.

Exit speed is 85 – 90 kts.

All skydiving aircraft in Australia are fitted with Single Point Restraints (SPR) and it is a requirement that they must be attached to a parachutist's harness (leg strap) on take-off.



9. Pre-competition training

Jump tickets can be purchased (AU\$45) at the DZ Manifest for training at the DZ from 4 October. Four competition planes will be operating.

Official practice jump entitlements are available on 6 October.

Training camps are available around Australia. Most Australian Drop Zones operate from a Cessna 208, as per the competition aircraft (although some DZs may have a slightly different step/handle configuration to the competition planes)

- **Ramblers - Toogoolawah** (Just over one hour to the WPC venue). "Toogs" is a busy DZ dedicated to sports skydiving. It has two 208 Caravans, onsite cabin or camping accommodation, catering/cafe, laundry, u/c packing and creepering areas, and is five minutes from a typical Australian outback town. The DZ is located at 7353 Brisbane Valley Highway, Toogoolawah QLD 4313. Contact Dave McEvoy at dave@ramblers.com.au for training packages.

For more accommodation information: <https://www.ramblers.com.au/dropzone/on-site-accommodation/>

- **Skydive Australia at Byron Bay** (One and half hours from the WPC venue). This DZ has a Grand Caravan with Texas Turbine conversion (21 jumpers on board). It handles up to three loads per hour on a busy DZ. Takeoff and landing in one site. Large hangar and a dedicated fun jumpers' area. Air-conditioned fun jumpers lounge with kitchen. Optional accommodation / camping near the DZ. Beautiful Coastal / Byron Bay views. 10 minutes' drive to Byron Bay. Very experienced DZ in servicing team training.

DZ located at Hangar 1, Tyagarah Airfield, Pacific Hwy, Tyagarah NSW 2481. Contact Joe Stein at: j.stein@skydive.com.au to arrange the best training package to suit.

- **1300SKYDIVE** has four Super Caravans located at various DZs around Australia, the closest being at Caloundra on Queensland's Sunshine Coast - just over 1.5 hours from the WPC venue.

Caloundra is a beach location although teams may like to train at Innisfail or Bowen in Far North Queensland for a unique Aussie experience.

There is also the DZ at Picton in Sydney (around one hour from the iFly indoor tunnel at Penrith). Contact Phil Onis for a team package and more information on the facilities. phil@sydneydivers.com.au

- **Skydive Oz** operates over one of the most beautiful places in Australia on the south coast of New South Wales at Moruya. It offers a Cessna Caravan 675 HP and a Cessna 185 300 HP, accommodation from AU\$25 per night (or camping from AU\$10 per night). Team training Packages: 10 x 14K = \$420, 50 x 14K = \$2000, 100 x 14K = \$3800. 7,000' jumps available from the C185 (great for CF training) = \$35 each. Bespoke packages also available. Skydivers are guaranteed 14,000' every load.

The Moruya township is a five minute drive from the DZ, where there are supermarkets, pubs, restaurants and other motel accommodation options. For more information, go to:

<http://www.skydiveoz.com.au/sport-skydivers/> or contact Shana at

shana@skydiveoz.com.au.

- **Skydive Nagambie** in Victoria is a purpose-built DZ and is the host of the 2018 Australian Nationals. The DZ has been designed with sports jumping as its priority. The DZ has a large indoor creeping area, two Caravan mock-ups (one inside, one outside under shade cloths), rig racks, private team rooms with video stations for debriefing, large debrief area for groups and an on-site rigging loft. It is perfectly set up to accommodate pre-competition training and provide the support needed to prepare for the WPC. Plus, they also have kangaroos come and visit!

The DZ operates with a Supervan 900HP and all loads go to 15,000 ft in just 10 minutes. The DZ has bunk house and twin-berth cabins available or free camping onsite. All accommodation options have access to hot showers. There are various motel options in town just 15 minutes from the DZ. The town offers supermarkets, pubs and fast food takeaway outlets.

Jump prices are AU\$380 for 10 slots (team packages can be negotiated depending on number of jumps required). Contact Louise Cross or Tom Fletcher at: jump@skydivenagambie.com for more details.

10. Accommodation details

The Intercontinental at Sanctuary Cove is host to athletes, officials and delegates of the World Parachuting Championships - Gold Coast, Queensland. The hotel is less than 15 minutes from the drop zone. Participants who have registered with a Full Package entry fee will be placed here on a first come - first served basis. The Full Package is from 6-13 October (inclusive) 2018, checking out on 14 October.

Single room reservations are not part of the competition entry fees. Selecting a single room will incur an additional cost of AU\$120 per night. This fee will be charged at the time of registration.

Rooms are for Competitors and Officials only, or Full Package Accompanying Persons.



The Ramada Hotel Hope Harbour, Gold Coast, is tucked away in the tranquil waterways of Hope Island just 15 minutes from the WPC venue. The hotel will host participants who have registered with a Full Entry package fee once all rooms at the Intercontinental have been assigned.

The Full Package is from 6-13 October (inclusive) 2018, checking out on 14 October.

Single room reservations are not part of the competition entry fees. Selecting a single room will incur an additional cost of AU\$120 per night. This fee will be charged at the time of registration.

Rooms are for Competitors and Officials only, or Full Package Accompanying Persons.



Azzura Greens Resort Hotel is a quality apartment resort with world class facilities provided by dedicated industry professionals catering for all visitors' needs. It is just eight minutes from the WPC venue. Two bedroom apartments with a maximum capacity of three persons are available for AU\$280 per night. Contact apf@apf.com.au to make a reservation.



Onsite lodge/dormitory accommodation. A Basic Package (DIY) entry fee provides an opportunity to secure onsite accommodation at the Sports Super Centre. The onsite Lodges are all air-conditioned and have a lounge, kitchenette and laundry with eight quad or twin-share athlete rooms and two private twin-share Coach rooms.

The lodges are new, modern and comfortable. They are a five minute walk to shops and transport.

A bed in one of the Lodges is AU\$100 for competitors and AU\$260 for Accompanying Persons for eight nights, i.e.: check in 6 October/check out 14 October.

Contact apf@apf.com.au to reserve a bed. Food packages are available from the venue cafeteria. Linen and one towel are provided.



Other DIY options:

Accommodation is abundant on the Gold Coast and may be located through TripAdvisor or similar hotel booking site by searching "Runaway Bay". The following accommodation is closest to the drop zone:

Bayview Apartments – two bedroom/two bathroom apartments. Contact Stephen Vardy: info@bayviewwaters.com.au from AU\$177 per night for seven night packages.

11. Equipment

Each participant is responsible for the good condition of his/her equipment. (Sporting Code, Section 5, 5.1.1 [1]). The Organiser has no responsibility in this regard; the responsibility rests fully with the Delegation and competitor. Registration will be taken as a declaration by the Delegation and competitor that the parachuting equipment to be used is certified as being airworthy by competent authorities.

All equipment must receive an inspection and approval by the Meet Director, Chief Judge or his/her delegates prior to competition participation.

All equipment is to comply with APF Operation Regulations, Regulatory Schedules, RACs, Service Bulletins and Equipment Standards. (copies of these documents may be found here. <https://www.apf.com.au/apf-members/publications/publications>)

This includes but is not limited to:

- Both the main and reserve canopies must be ram-air type.
- All participants in an event consisting of 10 seconds or more of freefall:
 1. Must use equipment fitted with a serviceable AAD.
 2. The AAD must be switched on for all jumps.
- CF participants are not mandated to use equipment fitted with an AAD, unless required by APF Operational Regulations.
- All participants in CF events must carry a hook knife.
- A rigid type helmet must be worn by all participants who do not hold a Certificate Class C on all descents.
- All participants in AE, SP and VFS events must wear a functioning audible altimeter.
- All equipment used in Speed Skydiving may be subject to weighing prior to each round.
- All videographers must present their camera helmets for inspection prior to the event.

12. Officials

<i>Jury</i>	<i>FAI Controller</i>	<i>Meet Director</i>
Alberto Paracuellos Aliya Ananina David Choi	James Hayhurst	Bryan Burke
<i>Chief Judges</i>	<i>Chiefs of Judge Training</i>	<i>Assistant to Chief Judges</i>
AE: Silvia Wagner CF: Julia Sotnikova FS: Zeljko Tanaskovic SP: Angelika Mittasch	CF: TBA FS: TBA SP: Arnold Hohenegger	Neil "Fergs" Fergie
<i>Electronic Scoring Operator</i>	<i>SP Scoring Technical Director</i>	
Dirk Venter, Namespace Technologies	Arnold Hohenegger	

13. Scoring Equipment & Publication of Results

AE, CF & FS Electronic Scoring Equipment: InTime from *Namespace Technologies*

SP Electronic Scoring Equipment: Protrack II with *Speedware* software.

Results will be published on the official IPC website and the InTime website. Speed results will also be published on the ISSA website.

14. FAI Judges' training course: dates, time, equipment & location

The Organiser offers FAI Judge Training courses in CF, FS & SP.

Dates: Arrival Day 6 October with Opening Ceremony @ 1530, Course Dates 7-12 October inclusive, Closing Ceremony 13 October, 14 October Departure Day.

A minimum number of 14 FAI Trainee Judges across all disciplines is required for courses in CF and FS to proceed. However, the course in SP will occur regardless of this minimum number being met.

The course price is AU\$1,600 *maximum*. Options exist to reduce this price – see Training Judge Bulletin to be published later in the year via CJT. Maximum course price includes:

- Breakfast, Lunch and dinner x seven days/nights, APF Short Term Membership
- Accommodation at Azzura Greens Resort hotel (three people per two bedroom apartment) for 6-13 October inclusive (eight nights)
- Transfers from Brisbane/Coolangatta – return.
- Transport from hotel to DZ and return during competition
- Use of judging equipment and Technical Support
- Opening and Closing Ceremonies, Gala Banquet, gift bag and event T-Shirt.

CF and FS Trainee Judges will use InTime equipment on site at the Sports Super Centre. SP Trainee Judges will work in the competition alongside FAI Judges.

An FAI Judge Training Bulletin will be issued by the Chief of Judge Training, Karla Cole, in future when sufficient interest has been assessed. Further details will be provided in that Bulletin.

Please advise interest now to Karla Cole at karlacole@aol.com.

15. Medical / emergency details

- An air ambulance service with Medi-Vac helicopter on permanent standby is adjacent to the Sports Centre.
- The Gold Coast Hospital is 6.9 ks away (9 minutes by ambulance).
- General Practice medical services can be accessed at the local shopping centre (five minutes by car).
- The Sports Centre has a fully equipped first-aid room with trained first-aid staff on site.

16. Insurance details

Liability Insurance covering Competitors, Officials, Judges and Media, to the value of AU\$20 Million is provided during competition (including practice days). It is strongly recommended that all competitors have insurance to cover medical and repatriation expenses in the case of injury and for third party liability with cover for situations not covered by SC 5, 4.5.3 (2).

The FAI will be included as an insured party against public indemnity.

Accompanying Persons and visitors are responsible for their own insurance.

17. Visa information

An entry permit or visa is mandatory for visitors to Australia. Information on relevant entry permits and visas can be found at: <https://www.homeaffairs.gov.au/trav/visa/appl/visitor>

18. Rules and Regulations

The competition will be conducted in accordance with the 2018 Section 5 and 2018 Competition Rules for each discipline.

18.1 Dropzone Rules

- Athletes are expected to abide by a code of behavior:
 - Compete by the rules
 - Be safe – ALWAYS
 - Be respectful and considerate of others particularly if there is disagreement or conflict

- Do not be physically or verbally aggressive
- Cooperate with event staff and officials. They are there to help.
- Respect the rights, dignity and worth of other competitors regardless of gender, cultural background or religion.
- Athletes must abide by the dropzone rules relating to equipment checks, aircraft, canopy circuits and landing areas. You will be given a detailed Dropzone Briefing
- Australian law does not permit smoking at indoor and certain outdoor public places (including eCigarettes). The Sports Centre is a non-smoking venue.
- Australian law only allows alcohol to be served in specified licensed areas and rules of responsible service of alcohol apply. Bar services will be available at the Eastern end of the stadium and the VIP area adjacent to the swimming pool.
- Alcohol cannot be sold to persons under the age of 18 years or to persons who are unduly intoxicated or behaving badly.
- The Australian Parachute Federation has adopted the Anti-Doping Policy implemented by the Australian Sports Anti-Doping Authority (ASADA) and under the World Anti – Doping Code (WADA). <https://www.asada.gov.au/>
- In addition, the FAI Anti-Doping Policy applies as outlined in General Section 4.11.2 – 4.11.2.4
- A person found in breach of the rules, regulations, or code of behaviour may be subject to sanctions applied at the discretion of the Event Organiser and penalties applicable under S5.

19. Weather

The Gold Coast provides sunny days and warm tropical nights. The following statistics are based on a five year history.

Minimum Temperature – 16.9°C (62.4 °F)

Maximum Temperature – 26.8°C (80.24 °F).

Sunrise – ~0503

Sunset – ~1753

Average Winds - NNW, 13 KNTS

Chance of rain – Less than 7%.

Sea breezes later in the afternoon may require a light jacket to be worn.

20. Flags and Anthems

Flags: In order to provide the desired visual/audio spectacle, we ask that each Delegation send **two** national flags as large or larger (138cm x 68.5 cm preferred) than the required 100cm x 120cm dimensions in accordance with S5 4.4.2 (4) to:

National Development Manager
Australian Parachute Federation Ltd
PO Box 1440
SPRINGWOOD QLD 4119
AUSTRALIA

National Anthem: National Anthems may be mailed on CD to the above address or sent by email to apf@apf.com.au no later than 5th September 2018. While the rules state mp3, **mp4** is preferred.

21. Information Bulletin #2

A second Information Bulletin #2 will be issued at least 30 days before the start of competition and will highlight any new, additional and/or changed information.