

Airspace 2025

5th FAI World Indoor Skydiving Championships 2025
Indoor Solo Freestyle
Dynamic
23 - 27 April 2025

AIRSPACE INDOOR SKYDIVING



1. Event Organisers	4
1.1 FAI Member/NAC	4
1.2 National Parachute Federation	4
1.3 ISC Delegate	4
1.4 Organising Committee	4
1.5 Application fee	5
1.6 Commercial rights	5
2 Event Details	5
2.1 Full name of Event	5
2.2 Disciplines to be contested.	5
2.3 Event Dates	6
2.4 Location of Event	6
2.5 Access to location	7
2.6 Weather conditions – Not applicable	8
2.7 Airspace restrictions – Not applicable	8
2.8 Landowner restrictions	8
2.9 Details of insurance	8
2.10 Budget and Pricing	9
2.11 Facilities	10
2.12 Wind tunnel	11
2.13 Pre-event training	12
2.14 Accommodation	13
2.15 Outline of media plan	14
2.16 Accommodation details for FAI/ISC officials.	15
2.17 Details of all Judging and Scoring Equipment to be provided.	15
2.18 Public Address system	15

2.19 Safety	15
2.20 Proposals for Event Officials	16
2.21 Details of on-site communications	16
2.22 National, State, Provincial, Local, Organiser Legislation / Rules	16
2.23 Visa requirements	16
2.24 Medals	16
2.25 Anti-Doping Requirements	16
2.26 Date of post event report	16
2.27 Additional Information	16
Opening and Closing Ceremonies	16

1. Event Organisers

Airspace Indoor Skydiving SA & Airspace Team (flyevents.org)
Rue Charles Lindbergh 26
6041 Gosselies
Belgium
Contact person: Håvard Flaar
Contact number: +32 485 70 23 72
E-mail: havard@airspace.be

1.1 FAI Member/NAC

Name: Royal Belgian Aero Club
Address: Montoyerstraat 1
Zip: 1000
City: Brussels
Country: Belgium
Contact Person: Jacques Berlo
Telephone: +32(2)511 79 47
E-mail: j.berlo@belgianaeroclub.be

1.2 National Parachute Federation

Name: Belgian Parachute Federation
Address: Rue de la Sauvenière 122
Zip: 4900
City: Spa
Country: Belgium
Contact Person: Mark Blockhuys
Telephone: +32 476 43 48 67
E-mail: mark.blockhuys@gmail.com

1.3 ISC Delegate

Name: David Grauwels
E-mail: davegrauwels@gmail.com
Telephone: +32 485 74 03 20

1.4 Organising Committee

CEO Airspace Indoor Skydiving - Eddy Vande Vonder
eddy@airspace.be

Head of Organising Committee - Håvard Flaar
havard@airspace.be

1.5 Application fee

The Application fee was transferred 31 January 2024.

Banking Information:

- a) Account Name: Airspace SA
- b) Account Number: BE 78 7340 3585 8986
- c) IBAN: BE 78 7340 3585 8986
- d) BIC: KREDBEBB
- e) Bank name: KBC Heverlee

1.6 Commercial rights

As per FAI rulings

2 Event Details

2.1 Full name of Event

5th FAI World Indoor Skydiving Championships 2025
Indoor Solo Freestyle
Dynamic

2.2 Disciplines to be contested.

- Dynamic 4-way (Open, Junior)
- Dynamic 2-way (Open, Junior)
- Solo Speed (Open, Junior), if included in the program at the 2024 plenary.
- Solo Freestyle (Open, Junior)

2.3 Event Dates

Airspace Indoor Skydiving suggests to hold the event from April 23-27, 2025. Large and successful international events have previously been organized by Airspace Indoor Skydiving during this period. We know from experience that these dates work well and it is at the end of the northern hemisphere Indoor Skydiving training season.

Complete program / Competition dates and schedule:

Date	Description
April 9 - April 23, 2025	Registered training period*
April 20-23, 2025	Dynamic Judges Course, arrival of Chief Judge of Training
April 22, 2025 (Tuesday)	Arrival of Chief Judges
April 23, 2025 (Wednesday)	Arrival of Event Judges Official Arrival day Arrival of Teams Pre competition training**
April 24, 2025 (Thursday)	Arrival of Judges Arrival of Officials Registration Team Photos Official Practice day (Speed setting Flights) Opening Ceremony and Competition Draws Competitors and Team Leaders Meetings Judges Conference
April 25, 2025 (Friday)	Competition Day 1
April 26, 2025 (Saturday)	Competition Day 2 Closing Ceremony & Awards (Start approximately 20h) Gala Dinner & Party (Start approximately 20h)
April 27, 2025 (Sunday)	Official Departure Day Departure of Delegations

* A max amount of training time allowed per team in the days leading up to the competition might be set to give all teams a chance to book training time.

** Each Team in each category, whose official registration reaches the Organiser of the competition before its official deadline, will have the opportunity, under the terms and conditions set by the Organiser, to book a maximum of fifteen (15) minutes training Flights between 8:00 am and 24:00 pm (local time of the competition) to be performed within forty-eight (48) hours prior to Official Speed Setting Flights.

2.4 Location of Event

Airspace Indoor Skydiving is located in Charleroi, Belgium, by the Brussels South International Airport only 58 kilometers from the city center. Located in the center of Europe, Airspace Indoor Skydiving is close to several large population areas and easy accessible by public transportation, by car and by air. (See Annex D for illustration of map with venue in relation to major European cities as well as Belgian cities)

Address:

Airspace Indoor Skydiving,
Rue Charles Lindbergh 26,
6041 Charleroi,
Belgium

2.5 Access to location

Below you will find information on how to access our facility.

By Air

i) Brussel South Charleroi Airport (CRL), International Airport, is located just South-East of the tunnel. Only a 5 min drive from Airspace Indoor Skydiving.

Getting to Airspace Indoor Skydiving from Brussels South Charleroi Airport (CRL)

- Car Rental, the main car rental companies have offices at the airport:
<https://www.brussels-charleroi-airport.com/en/parking-access>
- Taxi, with several different companies operating to and from the Airport.
<https://www.brussels-charleroi-airport.com/en/parking-access>
- Walk (estimated 17 min from door to door)
- On demand shuttles to be booked directly with your hotel (fees may vary).

ii) The main International Airport in Belgium, Brussels Airport (BRU), is located 55 km from Airspace Indoor Skydiving.

Getting to Airspace Indoor Skydiving from Brussels Airport (BRU)

- Car Rental. In the arrivals hall you will find the desks of the major car rental companies.
- Taxi, with several different companies operating to and from the Airport.
- Busses and trains are alternatives that can take you from Brussels Airport to Airspace
- Bus and Train are alternatives that can take you from Brussels Airport to Airspace Indoor Skydiving. The bus station is located on level 0 - one floor down from the arrivals hall - and can be easily reached by using the escalators or elevators. The airport train station is located below the terminal (basement level -1).
- On demand shuttle to be booked directly with your hotel (fees may vary).

<https://www.brusselsairport.be/en/passengers>

By Train / Public Transport

For competitors and spectators traveling from neighboring countries, arriving with train is a good option. Direct trains to Brussels-Midi depart from Paris, Berlin, Amsterdam, London and Luxembourg among other near by large population areas.

<https://www.raileurope.com>

From Brussels-Midi there are both bus and train connections to Charleroi.

<http://www.belgianrail.be>

There are also shuttles from Brussels-Midi to Brussels South Charleroi Airport every half hour between 03.00 - 22:30

By Road

Airspace Indoor Skydiving is located just off E 19 and E 42, that are highways connected to the international E-road network. The table below provides some examples of the distance and time it takes to get to Airspace Indoor Skydiving by car from some of the nearby large population areas.

To Airspace Indoor Skydiving from:	Distance	Average Drive Time (by car)	Route
Amsterdam, NL	261 km	2 h 45 m	via E19
Paris, FR	289 km	2 h 59 m	via A2 E19
London, GB	403 km	4 h 49 m	via E42
Frankfurt, DE	393 km	3 h 59 m	via E42 A3
Düsseldorf, DE	222 km	2 h 14 m	via E42

2.6 Weather conditions – Not applicable

2.7 Airspace restrictions – Not applicable

2.8 Landowner restrictions

Airspace Indoor Skydiving owns the land where the tunnel is located, hence no restrictions apply.2.10
Details of event insurance

Airspace Indoor Skydiving has comprehensive liability insurance. Airspace Indoor Skydiving agrees to obtain insurance acceptable to FAI/ISC, in respect to the sporting event when awarded the Bid. The FAI, its respective directors, employees and assigned event personnel will be added as requested to the policy as additional insured parties during the event.

2.9 Details of insurance

Airspace Indoor Skydiving does not require tunnel flyers to hold third party liability insurance. During the registration process all flyers are asked to sign a Waiver and Risk Acceptance Statement. Each participant will be responsible for getting their own travel medical insurance.

2.10 Budget and Pricing

The budget and pricing for this event has been created using the current ISC rules in regard to the number of rounds, judging panels and other resources each discipline requires. We ask to be able to modify the registration fees in cooperation with the ISC Bureau should there be an unforeseen event such as changes to the ISC rules (Plenary 2024, 2025), inflation, war, a pandemic or any other unforeseen event.

Competitors entry fee include:

- Opening Ceremony
- Competition cost (including speed check and potential re-flights)
- Closing Ceremony & Banquet including food and drink
- Entry gift-pack

Non-Competitors entry fee include:

(anyone that is member of the Official delegation e.g Heads of delegation, Team Leaders, Coaches and Judges in training)

- Opening Ceremony
- Closing Ceremony and banquet including food and drink
- Entry gift-pack

	Entry Fee (excluding FAI/ISC Sanction Fee)	Sanction Fee	Pre-event training**
D4W	750€	+ 4 x FAI/ISC Sanction Fee	613,20 €/h Off Peak 650 VAT incl.
D2W	550€	+ 2 x FAI/ISC Sanction Fee	613,20 €/h Off Peak 650 VAT incl.
Solo Speed	450€	+ 1 x FAI/ISC Sanction Fee	613,20 €/h Off Peak 650 VAT incl.
Freestyle	450€	+ 1 x FAI/ISC Sanction Fee	613,20 €/h Off Peak 650 VAT incl.
Additional team member	300€	+ 1 FAI/ISC Sanction Fee	613,20 €/h Off Peak 650 VAT incl.
Additional Event*	€50 discount		-
Non competitors			
Head of delegation	250€	+ 1 FAI/ISC Sanction Fee	-
Member of delegation	250€	+ 1 FAI/ISC Sanction Fee	-
Judge in training	250€	+ 1 FAI/ISC Sanction Fee	-

* If a competitor registers for more than one event the team fee will be discounted by 50€ per each already registered competitor for the additional event.

** Teams that are registered and have paid full Entry Fee can book time at Airspace Indoor Skydiving prior to the event at a reduced rate. All team members have to be present and flying. During the registered training period, flying time will be reserved for teams to train. Flight time could be limited per team to give every team a chance to fly during these dates. The limit will be set when the number of teams is confirmed. The rate of 613,20€ (650 VAT incl.) is for Off Peak hours only. This rate is our current training time rate (January 2024). It is subject to change should any unforeseen events such as for example changes to the ISC rules (Plenary 2024, 2025), inflation, war or a pandemic happen.

*** Each Team in each category, whose official registration reaches the Organiser of the competition before its official deadline, will have the opportunity, under the terms and conditions set by the Organiser, to book a maximum of fifteen (15) minutes Training Flights between 8:00 am and 24:00 pm (local time of the competition) to be performed within forty-eight (48) hours prior to Official Speed Setting Flights.

Late registration may be accepted if capacity allows. The Entry Fee will be increased by 50%.

2.11 Facilities

See below illustration as well as Annex E for blueprints

The facility is enclosed in one building and designer-built for hosting large events.

Ground Floor:

When entering the building you meet a large open space of 170 m², specifically designed to draw your attention straight to the flight chamber. The open plan allows an easy flow between reception, bar and flight chamber. For more detailed information see Appendix E.

First Floor

The first floor is specifically designed for spectators, with an open plan area of 120 m² and a glass balustrade to allow for an excellent view of the tunnel. On the first floor there is also a large conference room, a large office, toilets, several smaller office spaces and a staff room.

Judges / Judging Area:

The area around the tunnel is sufficient for both live judges and audience. The facilities can also dedicate two private rooms for the judging panels.

Competitors:

The building has two large changing rooms equipped with a total of 60 permanent lockers and 2 showers. The facilities can dedicate an exclusive large area (lounge) for the competitors alone.

Parking:

The road in front of the facility could be closed for traffic and used as the main parking area during the event.

See our facilities on Google View:

<https://www.google.com/maps/@50.47231,4.474271,3a,61.7y,13.54h,76.85t/data=!3m7!1e1!3m5!1sbbBr5mAk5GYAAAQphVrx1A!2e0!3e2!7i13312!8i6656?hl=en-US>

2.12 Wind tunnel

The tunnel is an ISG 14ft recirculating wind tunnel constructed in April 2014. The ISG technology makes for arguably the smoothest airflow of any vertical tunnel. The flight chamber glass is 5 meters high and 32 mm thick which creates an optimal outside view of flying for the audience. The thick glass contributes to a relatively quiet environment free of tunnel noise.

The door of the anti-chamber can be opened and closed at any time while the tunnel is running, which enables maximum efficiency in regard to flight time. With the ISG louver technology we are able to regulate the temperature inside the flight chamber. The tunnel is capable to operate at a maximum speed equivalent to 310 km/h.

The tunnel owners and the staff take great pride in the appearance of the tunnel and after ten years of running it is fair to say that the tunnel and facilities are still in great condition.

Staff Maintenance:

- Twice daily operational maintenance checks are completed and recorded by trained tunnel staff.
- Weekly, monthly and yearly maintenance are carried out according to ISG protocol.

Tot number of hours (up to date): 20 000 h

Diameter: 14.7 ft

Hight: 17 m

Hight of the glass: 5 m

Cameras:

All cameras will be set up to output to screens for the judging panels. All cameras are able to record and store the footage for review. All current cameras comply with the technical requirements in the ISC Competition Rules. Airspace Indoor Skydiving is an experienced host of national and international Indoor Skydiving Events and agrees to set up all required cameras with the technical requirements and backups, in the ISC Competition Rules.

For Dynamic and Freestyle:

- Speed Routines: A camera placed at each sideline and at the centerline. All cameras will output to screens for viewing by the judging panels.
- Free Routines: One center line camera.

It is understood and agreed that Airspace Indoor Skydiving will have all equipment needed ready and operational for all competition performances and official training. In addition to the minimum requirements Airspace Indoor Skydiving commits to having Judging Cameras and Light Bars set up and ready prior to the competition during the Pre-event Flight Time.

Music / Public Address System

Our facilities are equipped with excellent built-in speakers for music in all areas of the building. The Public Address System and speakers for music will be customized to meet the requirements for the competition.

Any Freestyle or Dynamic Team wishing to perform using music must submit a music file exactly as needed for the performance. All competitors wishing to perform with music should bring their own music headsets and receivers.

Athletes and teams performing to music must choose music tracks that are either free to use or that they can document having the rights to perform to. If not, they risk that the music will not be diffused either in the competition arena or on the live stream.

2.13 Pre-event training

Teams that are registered and have paid full Entry Fee can book time at Airspace Indoor Skydiving prior to the event at a reduced rate. All team members have to be present and flying. During the registered training period, flying time will be reserved for teams to train. The limit will be set when the number of teams is confirmed. Flight time could be limited per team to give every team a chance to fly during these dates. The limit will be set when the number of teams is confirmed. The rate of 613,20€ (650 VAT incl.) is for Off Peak hours only (Mon-Sun 09-23). This rate is our current training time rate (January 2024). It is subject to change should any unforeseen events such as for example inflation, war, a pandemic event happen.

Each team or freestyle performer, whose official registration reaches the Organiser before its deadline, will be given the option of 15min of training time between 8:00 and 24:00 within 48 hours of the official training start. The team must book this time with the Organiser before the official registration deadline. After the deadline the organiser may offer the remaining time to anyone. Junior performers have priority between 08:00 and 18:00.

2.14 Accommodation

Van Der Valk - Hotel Charleroi Airport



The [Van Der Valk - Hotel Charleroi Airport](#). Equipped with Parking, free Wi-Fi and a Fitness room the Hotel Charleroi Airport is the highest standard hotel in close proximity to Airspace Indoor Skydiving. The hotel is located 7 km from the competition venue. The drive by car takes 10 minutes.

Ibis Budget Charleroi Airport

If you wish to travel on a low budget, [Ibis Budget Charleroi Airport](#) is the option for you. The hotel is located within walking distance to both Airspace Indoor Skydiving and Brussels South Charleroi Airport. It has a modest café, free parking and Wi-Fi and can provide an airport shuttle.



Hotel Aero 44 - Best Western Plus

Also within walking distance to our facility, the [Aero 44](#) is a Best Western Plus Hotel with an on site restaurant. This modern facility offers free Wi-Fi and parking to its numerous customers.

2.15 Outline of media plan

Media Plan

Pre-event

- > Event website
- > Social Media announcement
- > Blog post / mission Statement
- > Partner Outreach

Event Launch

- > Launch e-mail
- > Press Release
- > Blog and Social Media Announcement
- > Partnerships
- > Event Website
- > event #Airspace2025

Day- to- day

- > Regular Email, Social media, blogging/News updates
- > Thought Leadership and guest posts
- > Payed Promotion

During

- > Social media posts and announcements
- > Live Streaming
- > VIP National press invitations
- > Event website & App

Media Focus

The main focus will be:

- 1) to attract a broader audience for the sport
- 2) attract sponsors
- 3) engage athletes: competitors and non-competitors,
- 4) Attract other media with national and international coverage.

Social media will be used in addition to the website to create momentum and attract a broader audience, partners and sponsors. On these platforms the Live Stream will also be announced and marketed early to encourage people to follow the competition.

Press releases will be written with key search terms in mind, so that anyone with Google Alerts set up for those terms will see the release. VIP Press Invitations will be sent out via E-mail to selected National media channels.

Airspace Indoor Skydiving will also invest in paid advertising during the day-to-day event marketing period leading up to the competition.

Media Channels

As an established and successful business Airspace Indoor Skydiving has developed a solid and proven media strategy. Airspace Indoor Skydiving is working with several external media channels with proven excellent response. These include local newspapers, tourist departments and local TV channels. Airspace continuously work with social media channels like Facebook and Instagram, as well as our own website - all which are frequently updated.

2.16 Accommodation details for FAI/ISC officials.

FAI and ISC officials will be accommodated either at Hotel Charleroi Airport - Van Der Valk or Hotel Aero 44 - Best Western Plus.

See Annex H for photos

Contact:

Address: Chaussée De Courcelles 115, Gosselies, 6041 Charleroi, Belgium

Website: www.hotelcharleroiairport.be

Phone: +32 71 25 00 50

2.17 Details of all Judging and Scoring Equipment to be provided.

Airspace Indoor Skydiving commits to acquire judging and Scoring equipment that meets at the requirements set forth by the ISC for all events. Airspace has a Dynam3 license, and this is a judging system we are well familiar with after having hosted several competitions.

2.18 Public Address system

Our facility is equipped with a proven and well functioning Public Address System for the whole building.

2.19 Safety

All legal requirements are met for the building in regard to safety and emergency plans. Full ambulance and medical services are available through 112 emergency service.

Hospital:

Several hospitals and health centers are located near by the tunnel.

Nearest Hospital (5 min by car):

Clinique Notre-Dame de Grâce

Chaussée de Nivelles 212

6041 Charleroi

Closest large hospital (15 min by car)

ASBL Grand Hôpital de Charleroi (GHdC)

Grand'Rue, 3

6000 Charleroi

2.20 Proposals for Event Officials

Event Officials to be determined in association with the ISC.

Airspace Indoor Skydiving will cover travel, food and accommodation for FAI Controller, Chief Judges and Assistant to Chief Judge. For all other members of the Judging Panel and Event Officials food and accommodation will be covered by Airspace Indoor Skydiving.

2.21 Details of on-site communications

Airspace Indoor Skydiving is fully equipped with multiple phone lines for both in-house communication and external calls.

2.22 National, State, Provincial, Local, Organiser Legislation / Rules

There are no National, State, Provincial or local legislation or rules that applies to this event.

The organiser, Airspace Indoor Skydiving, requires all competitors to sign a Waiver and Risk Acceptance Statement and to wear a helmet when flying.

2.23 Visa requirements

For information regarding VISA requirements for the Kingdom of Belgium, please visit.
<https://diplomatie.belgium.be/en>

Should you require a visa invitation, please send your details to havard@airspace.be

Citizens of the European Union do not need any form of visa or other permission to enter Belgium.

2.24 Medals

Airspace Indoor Skydiving will choose to provide their own award medals conforming to the FAI specifications, in accordance with ISC Medal requirements.

2.25 Anti-Doping Requirements

Airspace Indoor Skydiving agrees to provide appropriate facilities for anti-doping agencies should it be requested.

2.26 Date of post event report

Suggestion for the post event report: Friday May 9, 2025.

2.27 Additional Information

Opening and Closing Ceremonies

The Opening Ceremony will be held at Airspace Indoor Skydiving on April 24 2025. Teams and Members of Delegations from each country will be required to take part in a short parade as all the countries and teams are being announced. The ceremony will be held outdoors. Please dress accordingly.

FLAGS AND NATIONAL ANTHEMS

- All delegations are required to bring their official country flag to the competition.
- All delegations are required to send their official country national anthem to havard@airspace.be in electronic format before April 4.

Postponement / Cancellation

In 2018 we were awarded the 2nd FAI European Indoor Skydiving Championships 2020 and 4th FAI world Cup of Indoor Skydiving 2020. This competition met several challenges such as a global pandemic, inflation and war and was subsequently postponed twice before it was finally carried out two years later in 2022. This Bid is subject to such unforeseen events and information in this document might have to be modified in cooperation with the ISC Bureau.

Contact

For any questions, please do not hesitate to send us an e-mail to havard@airspace.be .

We are looking forward to seeing you all at Airspace2025 the 5th FAI World Indoor Skydiving Championships 2025.

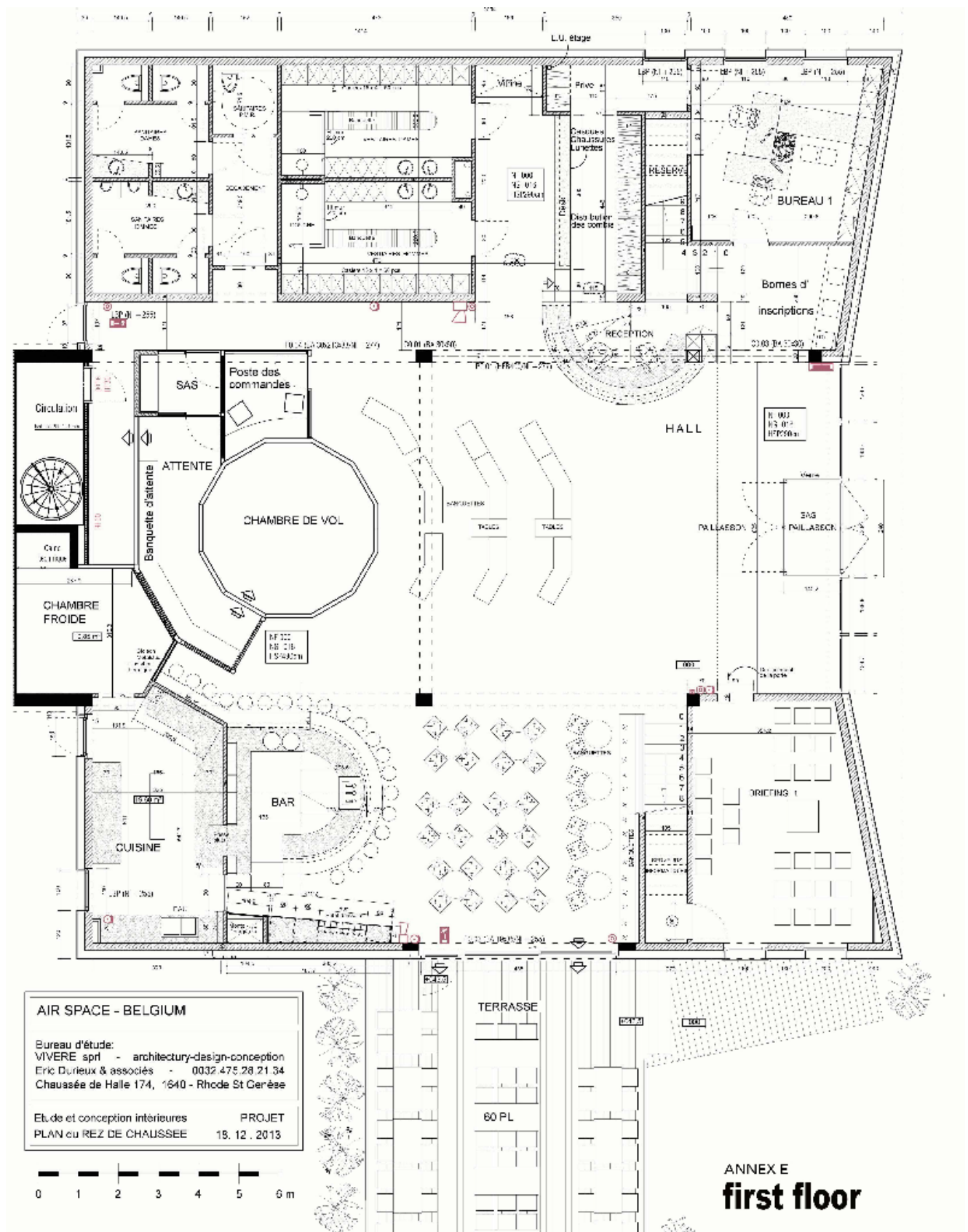
ANNEX D

Map: venue in relation to major European Cities

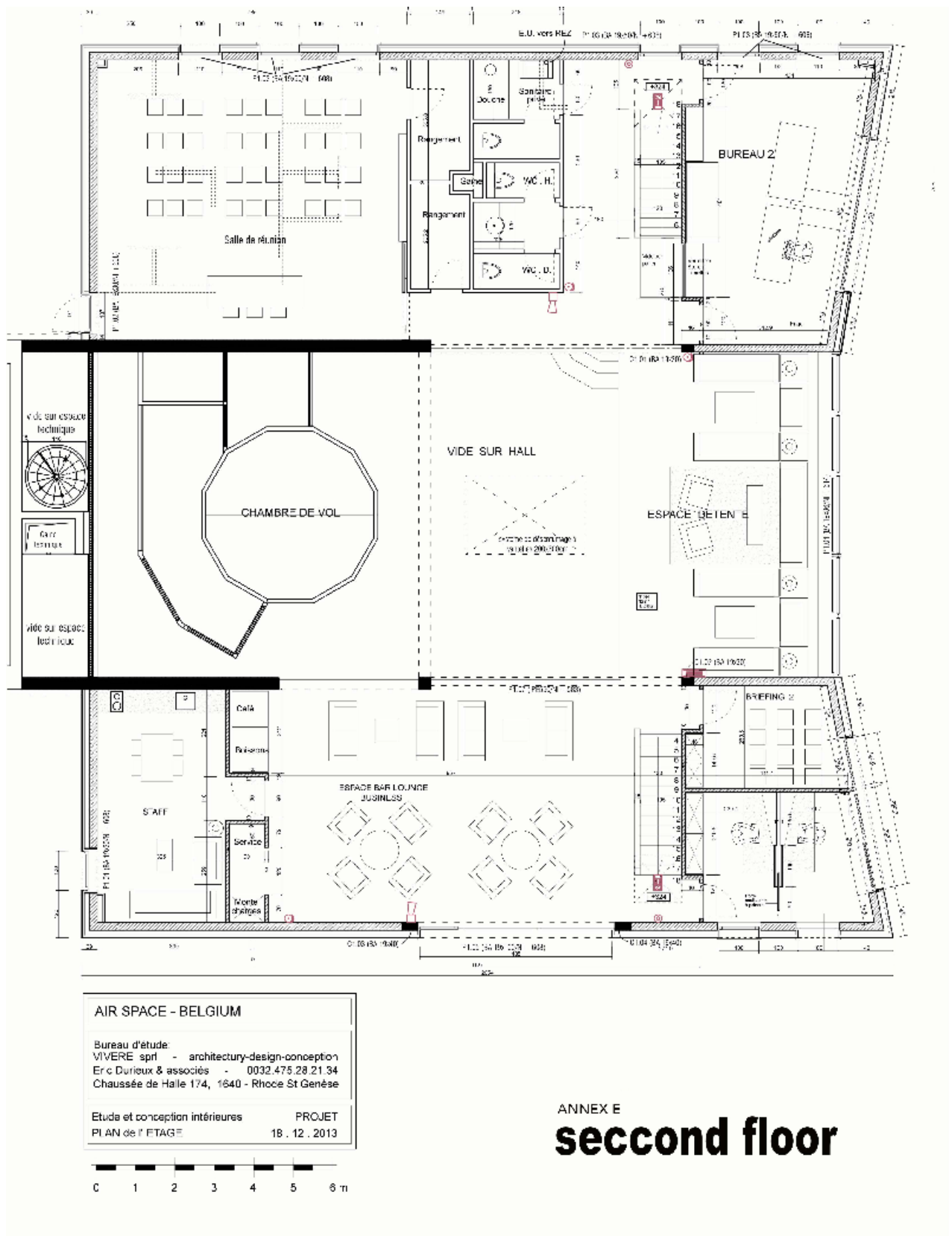


Map: venue in relation to large Belgian Cities





/Volumes/USB ERIC/AUTO CAD - general/AIR SPACE - S



/Volumes/USB ERIC/AUTO CAD - general/AIR SPACE - S

ANNEX F

Photos of anti-chamber and door



Anti-chamber to the right , to the left is the door between flight chamber and anti-chamber.
Photo taken from the entrance to the anti-chamber.



Door between flight chamber and anti-chamber.
Photo taken from the inside of the flight chamber.

The door of the anti-chamber can be opened and closed at any time while the tunnel is running, which enables maximum efficiency in regard to flight time.